

Argyll



Figure 1: Argyll.

Trends in breeding numbers are available for six species and trends in breeding success for eight of the 13 species for which the SRMS holds records for Argyll (Table 1).

Osprey

The number of breeding pairs and breeding success showed no significant change. No trends in clutch size or brood size are available but the number of fledglings showed no significant change (Figure 2).

Golden Eagle

No trends are available for the number of breeding pairs. Breeding success showed no significant change. No trends are available for clutch size or brood size but the number of fledglings showed no significant change (Figure 3).

Hen Harrier

There was no significant change in breeding pairs or breeding success. No trends in clutch size, brood size or number of fledglings are available (Figure 4).

White-tailed Eagle

The number of breeding pairs increased significantly (+5.8%) while breeding success showed no significant change. No trend is available for clutch size but trends for brood size and the number of fledglings both showed no significant change (Figure 5).

Buzzard

The number of breeding pairs decreased significantly (-4.2%) while breeding success showed non-linear variation. No trend is available for clutch size but trends for brood size and the number of

fledglings both showed no significant change (Figure 6).

Barn Owl

No trend is available for the number of breeding pairs. Breeding success showed no significant change. No trends are available for clutch size or brood size but number of fledglings increased significantly (+3.5%) (Figure 7).

Peregrine

The number of breeding pairs decreased significantly (-11%) while breeding success showed no significant change. No trends in clutch size, brood size or number of fledglings are available (Figure 8).

Raven

The number of breeding pairs and breeding success showed no significant change. No trend is available for clutch size but trends for brood size and the number of fledglings both showed no significant change (Figure 9).

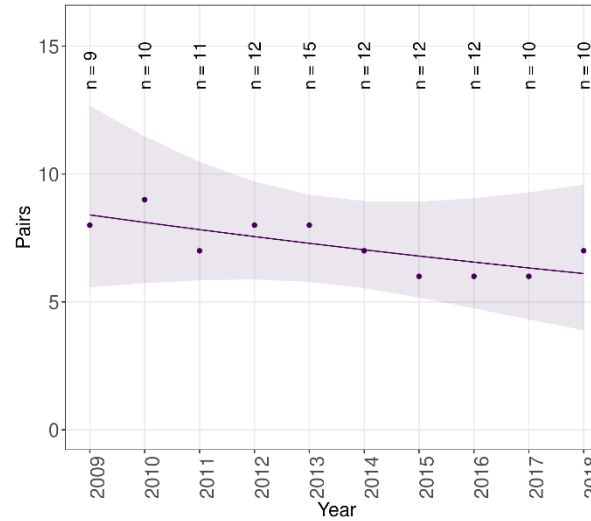
Table 1: Summary of SRMS trends for Argyll during 2009-2018. Figures in parentheses indicate the annual change, with significant increases highlighted in green, significant decreases highlighted in blue and non-significant changes highlighted in grey. ‘—’ indicates where the species occurs but no trend is available. ‘No SRMS data’ indicates where the SRMS does not hold any records for the region of interest.

Species:	Pairs	Success	Clutch size	Brood size	Number of fledglings
Osprey	Not significant ^s	Not significant ^s	—	—	Not significant
Golden Eagle	—	Not significant ^v	—	—	Not significant ^s
Sparrowhawk	—	—	—	—	—
Goshawk	—	—	—	—	—
Hen Harrier	Not significant	Not significant	—	—	—
Red Kite	No SRMS data	No SRMS data	No SRMS data	No SRMS data	No SRMS data
White-tailed Eagle	Increase ^{ax} (5.8%)	Not significant ^x	—	Not significant ^s	Not significant ^s
Buzzard	Decrease (-4.2%)	Non-linear	—	—	Not significant
Barn Owl	—	Not significant ⁿ	—	—	Increase (3.5%)
Tawny Owl	—	—	—	—	—
Kestrel	—	—	—	—	—
Merlin	—	—	—	—	—
Peregrine	Decrease ^s (-11%)	Not significant ^s	—	—	—
Raven	Not significant	Not significant ^r	—	—	Not significant

^a All data used, ⁿ Nestbox based, ^r No home range random effect, ^s Sample sizes small, ^v Variable effort, ^x Expanding population.

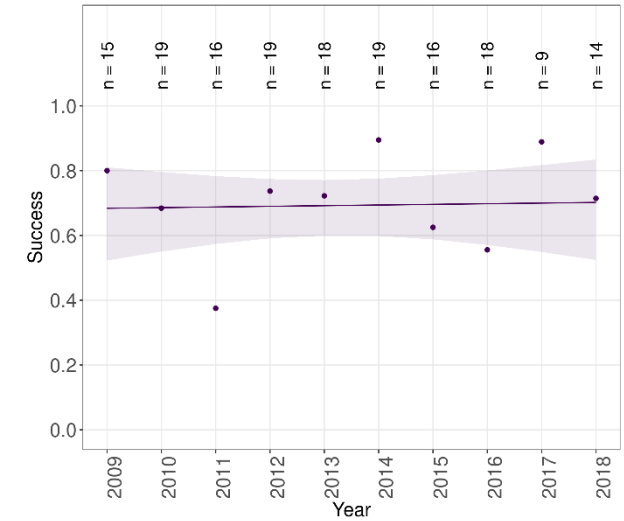


Trend in Pairs of Osprey in Argyll using SRMS data



Argyll trend: Not significant (caveats: Sample sizes small)

Trend in Success of Osprey in Argyll using SRMS data

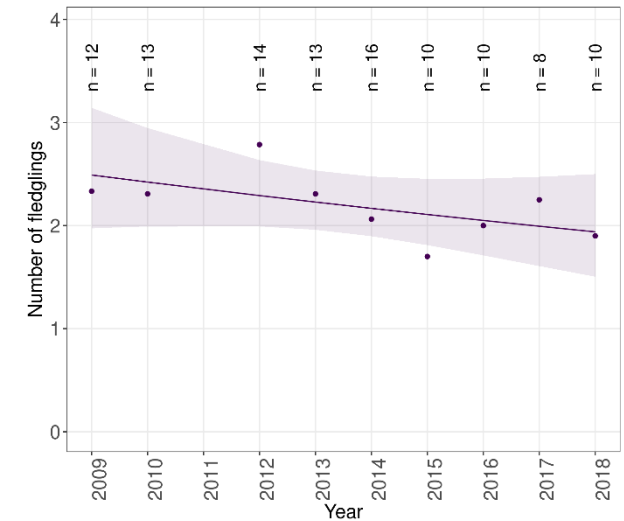


Argyll trend: Not significant (caveats: Sample sizes small)

No trend available
for clutch size

No trend available
for brood size

Trend in Number of fledglings of Osprey in Argyll using SRMS data



Argyll trend: Not significant

Figure 2: Trends in breeding pairs, success, clutch size, brood size and the number of fledglings of Osprey in Argyll during 2009-2018.

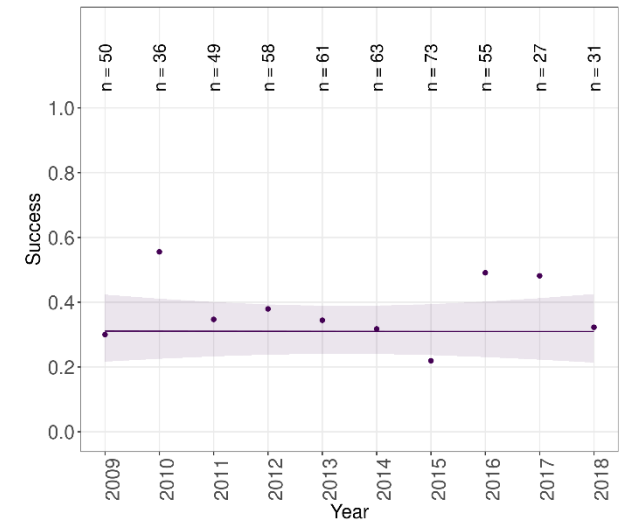


No trend available
for breeding pairs

No trend available
for clutch size

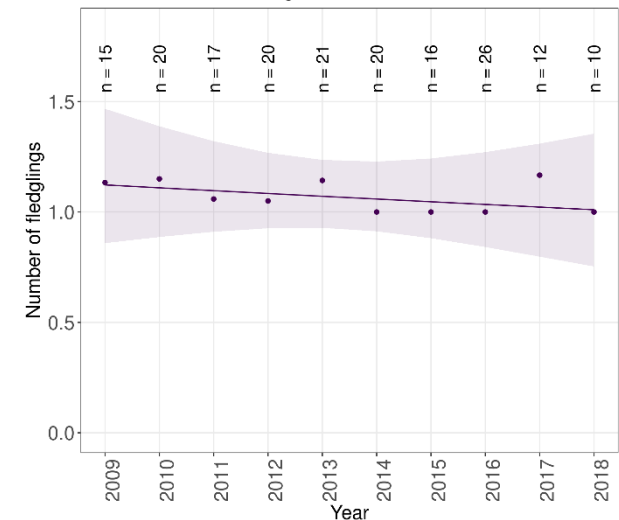
No trend available
for brood size

Trend in Success of Golden Eagle in Argyll using SRMS data



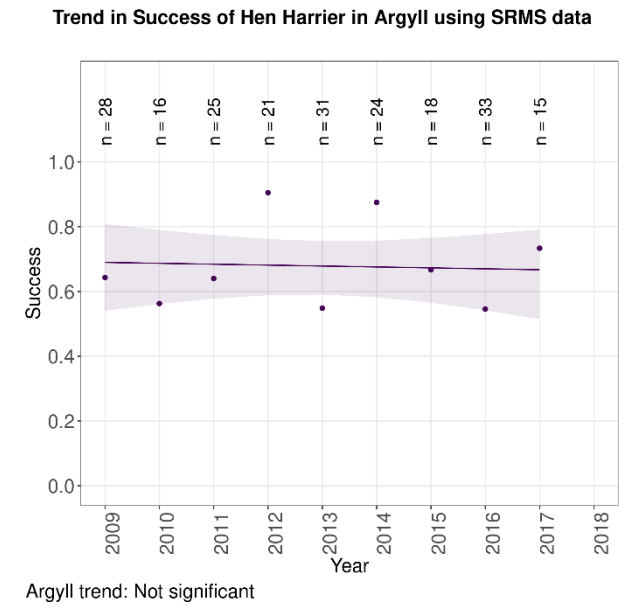
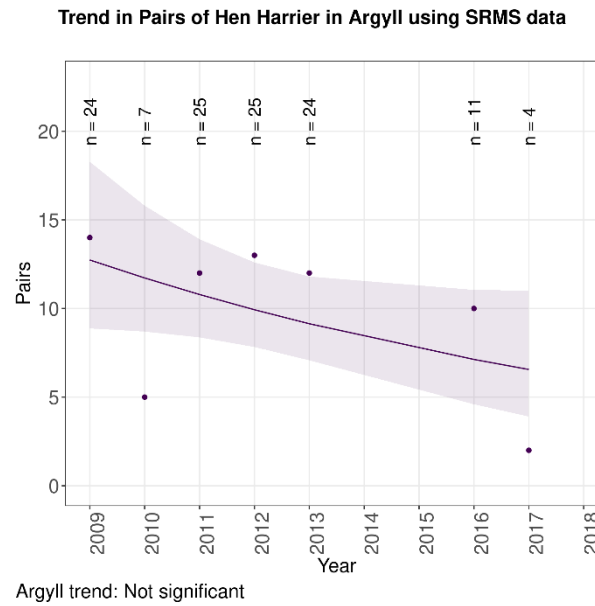
Argyll trend: Not significant (caveats: Variable effort)

Trend in Number of fledglings of Golden Eagle in Argyll using SRMS data



Argyll trend: Not significant (caveats: Sample sizes small)

Figure 3: Trends in breeding pairs, success, clutch size, brood size and the number of fledglings of Golden Eagle in Argyll during 2009-2018.

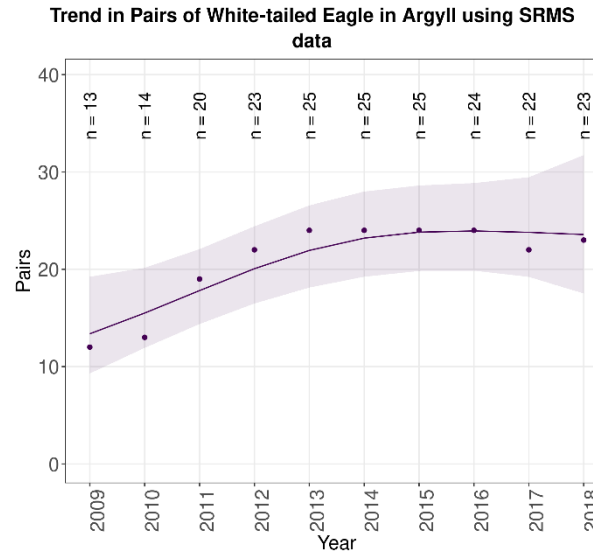


No trend available
for clutch size

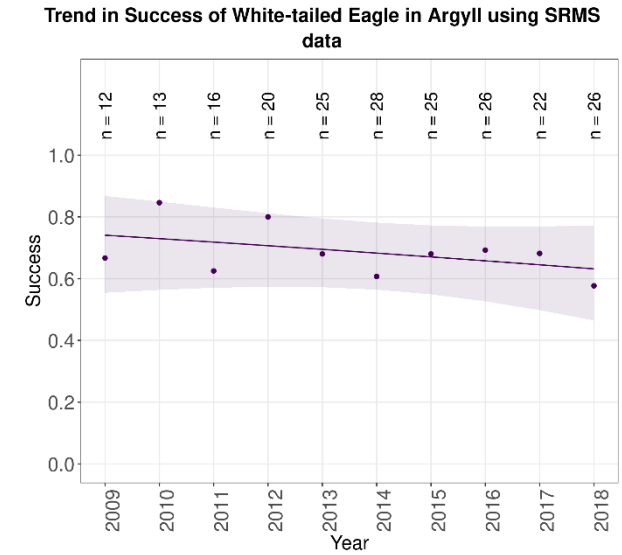
No trend available
for brood size

No trend available
for number of fledglings

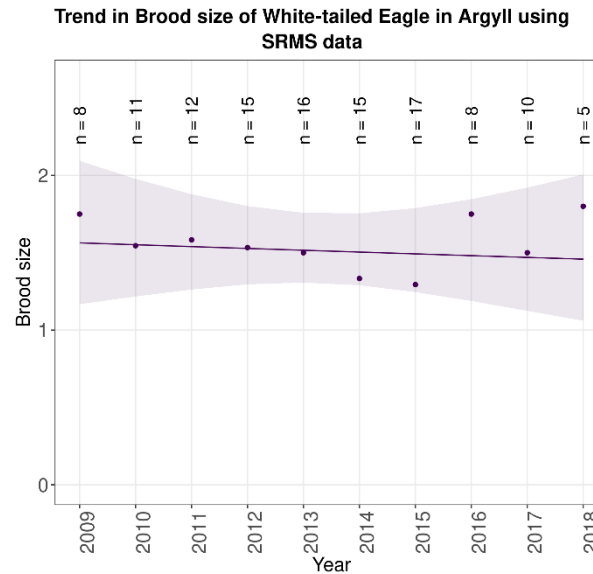
Figure 4: Trends in breeding pairs, success, clutch size, brood size and the number of fledglings of Hen Harrier in Argyll during 2009-2018.



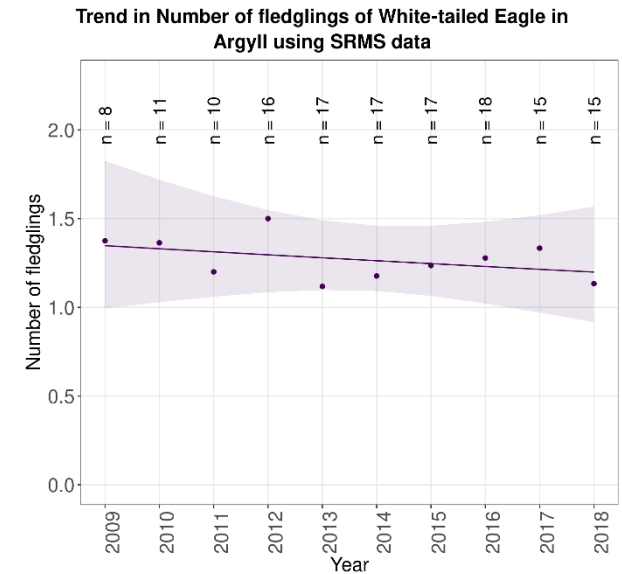
Argyll trend: Increase (caveats: Expanding population, All data used)



Argyll trend: Not significant (caveats: Expanding population)



Argyll trend: Not significant (caveats: Sample sizes small)



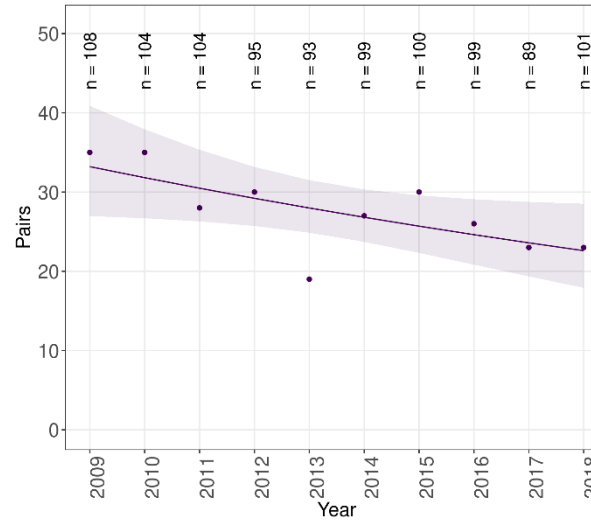
Argyll trend: Not significant (caveats: Sample sizes small)

No trend available
for clutch size

Figure 5: Trends in breeding pairs, success, clutch size, brood size and the number of fledglings of White-tailed Eagle in Argyll during 2009-2018.

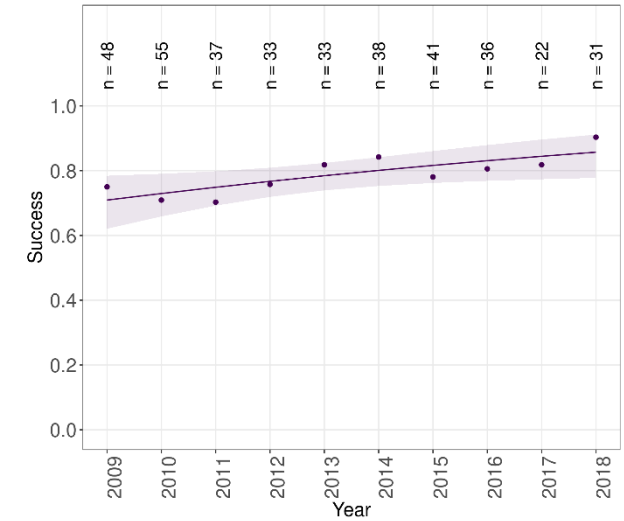


Trend in Pairs of Buzzard in Argyll using SRMS data



Argyll trend: Decrease

Trend in Success of Buzzard in Argyll using SRMS data

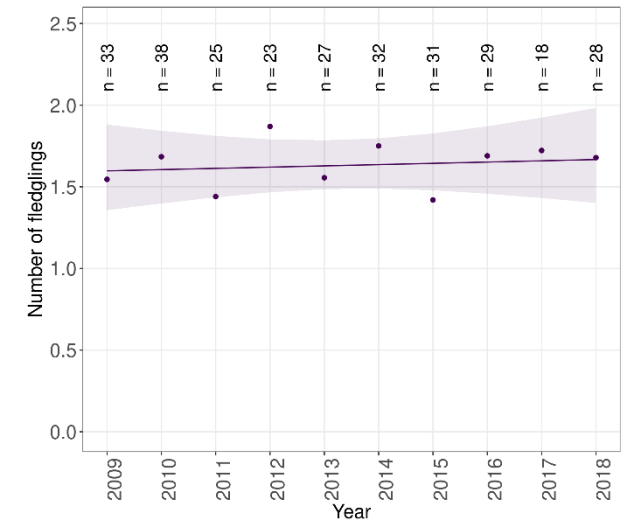


Argyll trend: Non-linear

No trend available
for clutch size

No trend available
for brood size

Trend in Number of fledglings of Buzzard in Argyll using SRMS data

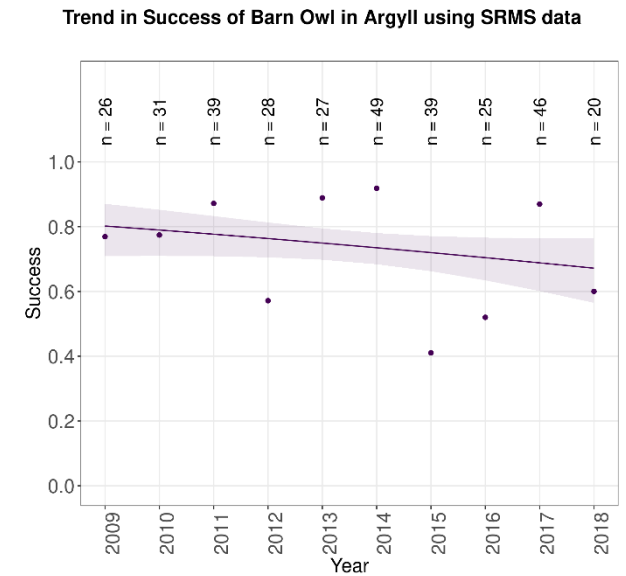


Argyll trend: Not significant

Figure 6: Trends in breeding pairs, success, clutch size, brood size and the number of fledglings of Buzzard in Argyll during 2009-2018.



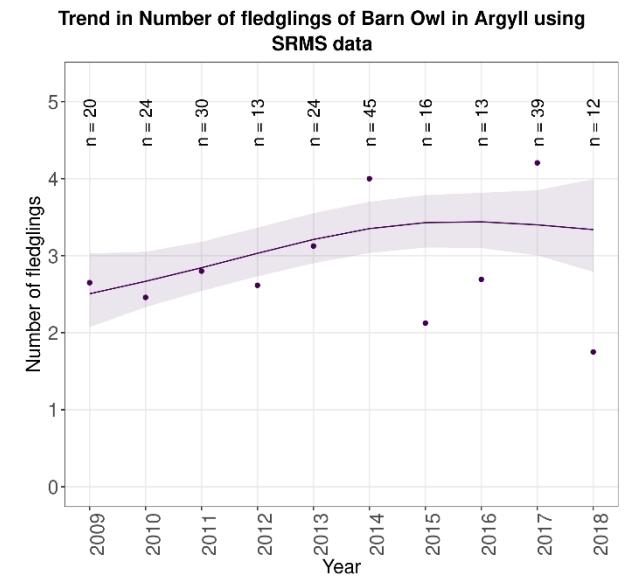
No trend available
for breeding pairs



Argyll trend: Not significant (caveats: Nestbox based)

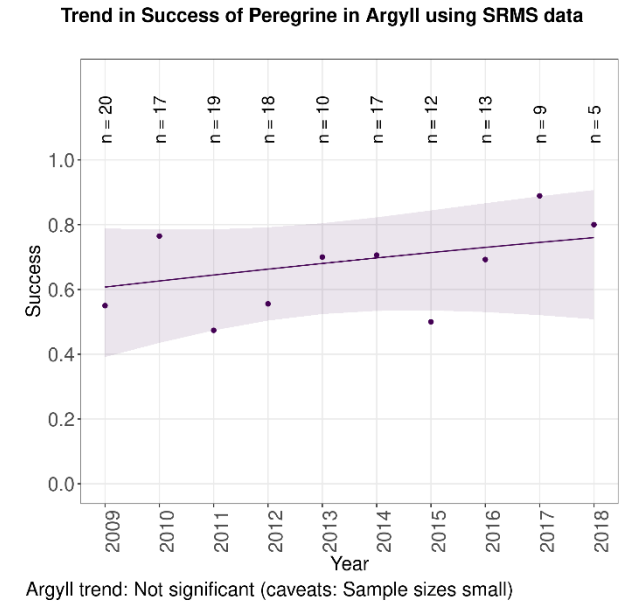
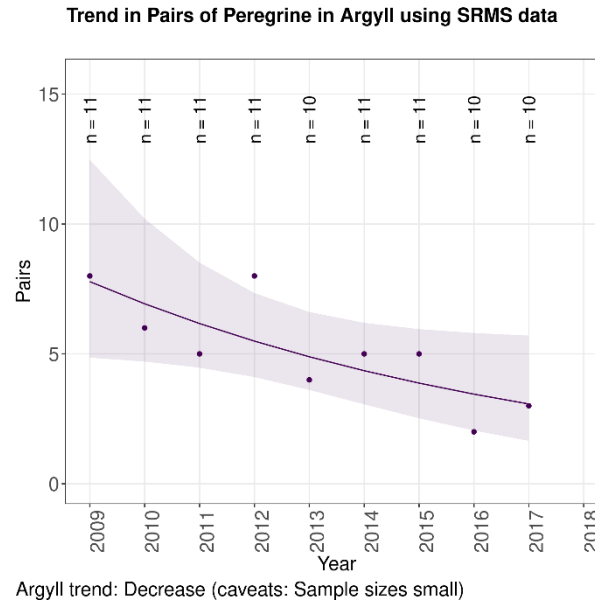
No trend available
for clutch size

No trend available
for brood size



Argyll trend: Increase

Figure 7: Trends in breeding pairs, success, clutch size, brood size and the number of fledglings of Barn Owl in Argyll during 2009-2018.



No trend available
for clutch size

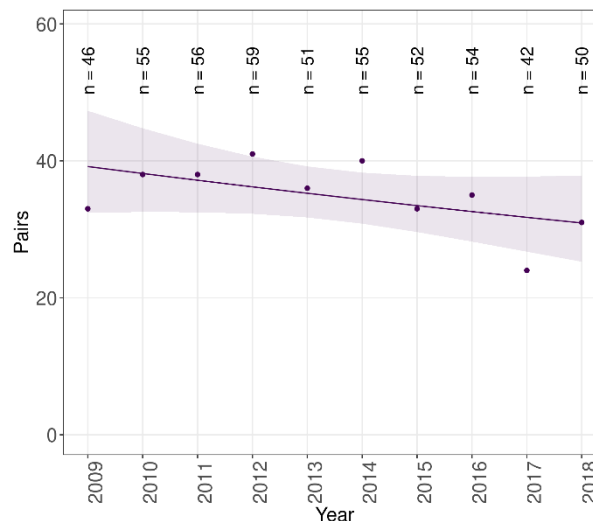
No trend available
for brood size

No trend available
for number of fledglings

Figure 8: Trends in breeding pairs, success, clutch size, brood size and the number of fledglings of Peregrine in Argyll during 2009-2018.

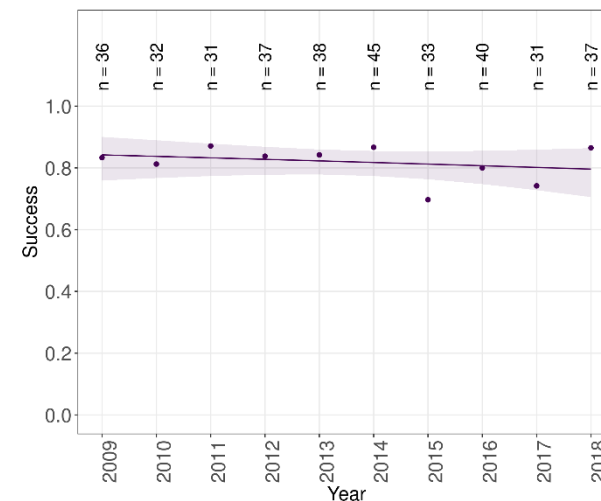


Trend in Pairs of Raven in Argyll using SRMS data



Argyll trend: Not significant

Trend in Success of Raven in Argyll using SRMS data

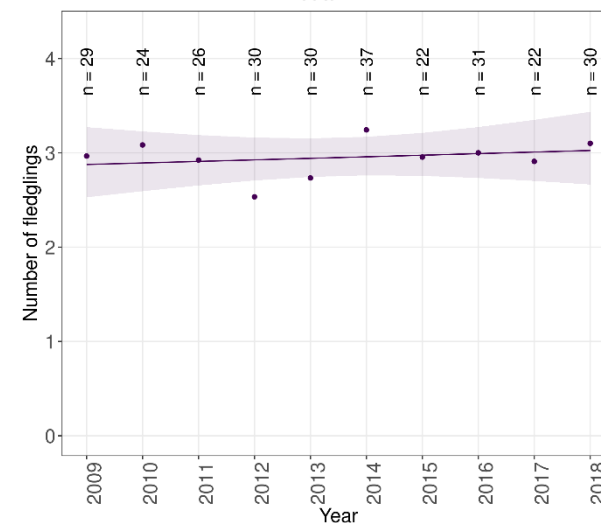


Argyll trend: Not significant (caveats: No home range random effect)

No trend available
for clutch size

No trend available
for brood size

Trend in Number of fledglings of Raven in Argyll using SRMS data



Argyll trend: Not significant

Figure 9: Trends in breeding pairs, success, clutch size, brood size and the number of fledglings of Raven in Argyll during 2009-2018.