

Central

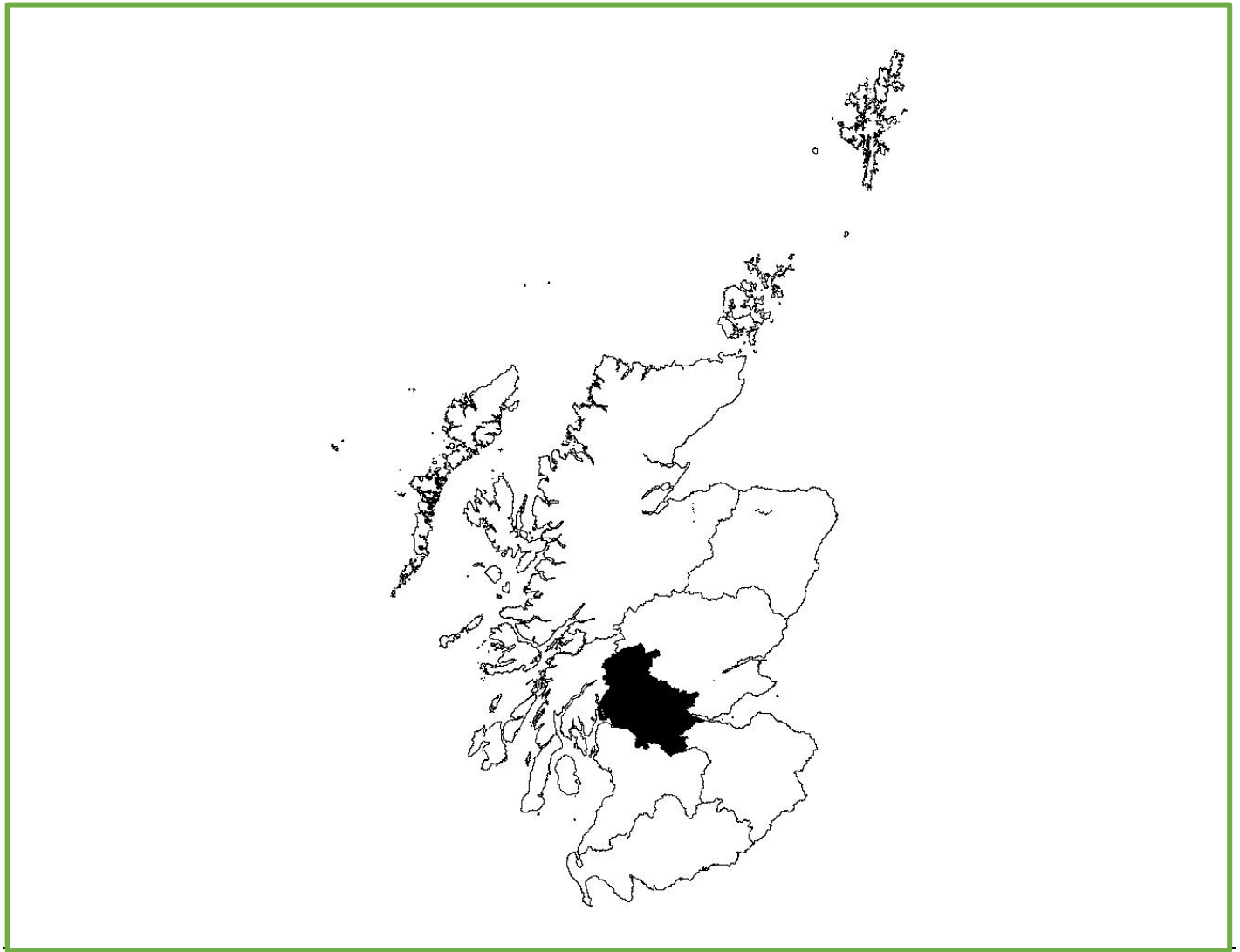


Figure 1: Central.

Trends in breeding numbers are available for five species and trends in breeding success for seven of the 13 species for which the SRMS holds records for Central (Table 1).

Osprey

No trend is available for the number of breeding pairs. Breeding success showed no significant change. No trends are available for clutch size or brood size but the number of fledglings showed no significant change (Figure 2).

Golden Eagle

The number of breeding pairs showed no significant change. No trends are available for breeding success, clutch size, brood size or the number of fledglings (Figure 3).

Red Kite

The number of breeding pairs and breeding success showed no significant change. No trends are available for clutch size or brood size but the number of fledglings showed no significant change (Figure 4).

Buzzard

No trend is available for the number of breeding pairs. Breeding success showed no significant change. No trends are available for clutch size or brood size but the number of fledglings showed no significant change (Figure 5).

Barn Owl

The number of breeding pairs (-42.5%) and breeding success (-0.7%) decreased significantly. Clutch size and the number of fledglings both showed no

significant change while brood size decreased significantly (-2.4%) (Figure 6).

Tawny Owl

No trend is available for the number of breeding pairs. Breeding success increased significantly (5.3%). No trends are available for clutch size, brood size or the number of fledglings (Figure 7).

Peregrine

The number of breeding pairs and breeding success showed no significant change. No trends are available for clutch size or brood size but the number of fledglings showed no significant change (Figure 8).

Raven

No trend is available for the number of breeding pairs. Breeding success showed no significant change. No trends are available for clutch size or brood size but the number of fledglings showed no significant change (Figure 9).

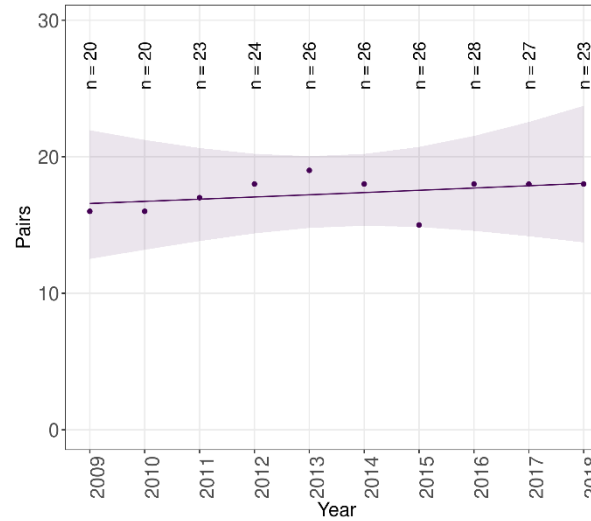
Table 1: Summary of SRMS trends for Central during 2009-2018. Figures in parentheses indicate the annual change, with significant increases highlighted in green, significant decreases highlighted in blue and non-significant changes highlighted in grey. ‘—’ indicates where the species occurs but no trend is available. ‘Absent’ indicates where the species is not known to breed.

Species:	Pairs	Success	Clutch size	Brood size	Number of fledglings
Osprey	Not significant	Not significant	—	—	Not significant
Golden Eagle	Not significant ^s	—	—	—	—
Sparrowhawk	—	—	—	—	—
Goshawk	—	—	—	—	—
Hen Harrier	—	—	—	—	—
Red Kite	Not significant ^x	Not significant ^x	—	—	Not significant ^s
White-tailed Eagle	Absent	Absent	Absent	Absent	Absent
Buzzard	—	Not significant ^v	—	—	Not significant
Barn Owl	Decrease ^{ns} (-42.5%)	Decrease ⁿ (-0.7%)	Not significant	Decrease (-2.4%)	Not significant
Tawny Owl	—	Increase ⁿ (5.3%)	—	—	—
Kestrel	—	—	—	—	—
Merlin	—	—	—	—	—
Peregrine	Not significant ^s	Not significant ^s	—	—	Not significant ^s
Raven	—	Not significant ^r	—	—	Not significant

^a All data used, ⁿ Nestbox based, ^r No home range random effect, ^s Sample sizes small, ^v Variable effort, ^x Expanding population.

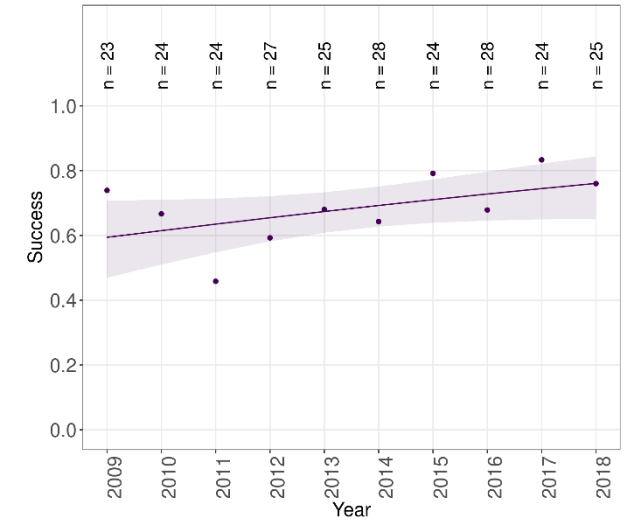


Trend in Pairs of Osprey in Central using SRMS data



Central trend: Not significant

Trend in Success of Osprey in Central using SRMS data

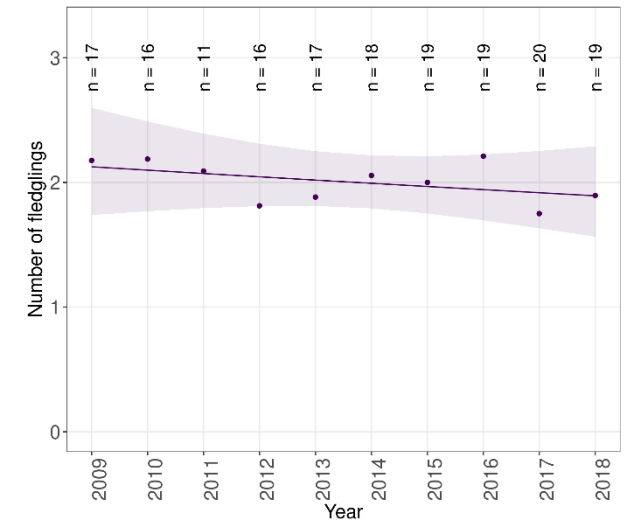


Central trend: Not significant

No trend available
for clutch size

No trend available
for brood size

Trend in Number of fledglings of Osprey in Central using SRMS data

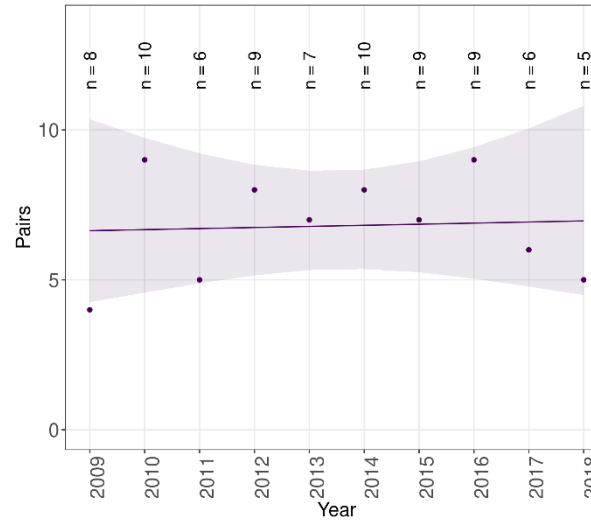


Central trend: Not significant

Figure 2: Trends in breeding pairs, success, clutch size, brood size and the number of fledglings of Osprey in Central during 2009-2018.



Trend in Pairs of Golden Eagle in Central using SRMS data



Central trend: Not significant (caveats: Sample sizes small)

No trend available
for breeding success

No trend available
for clutch size

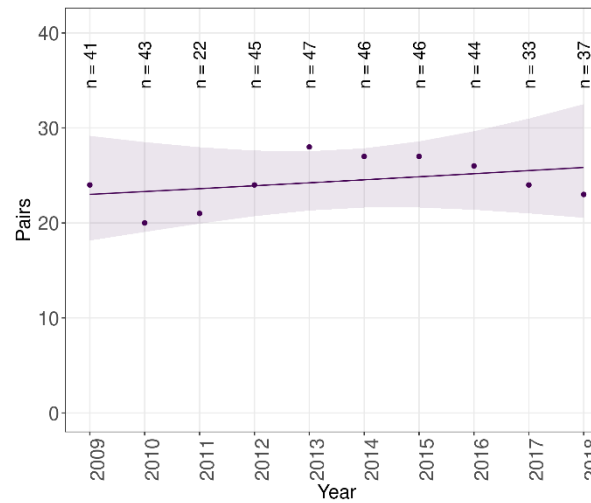
No trend available
for brood size

No trend available
for number of fledglings

Figure 3: Trends in breeding pairs, success, clutch size, brood size and the number of fledglings of Golden Eagle in Central during 2009-2018.

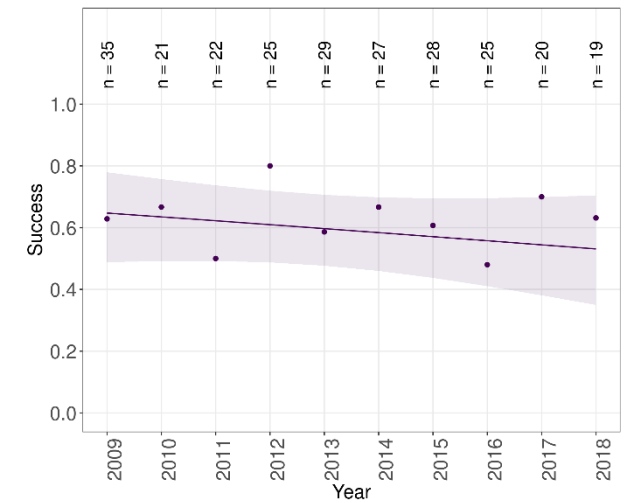


Trend in Pairs of Red Kite in Central using SRMS data



Central trend: Not significant (caveats: Expanding population)

Trend in Success of Red Kite in Central using SRMS data

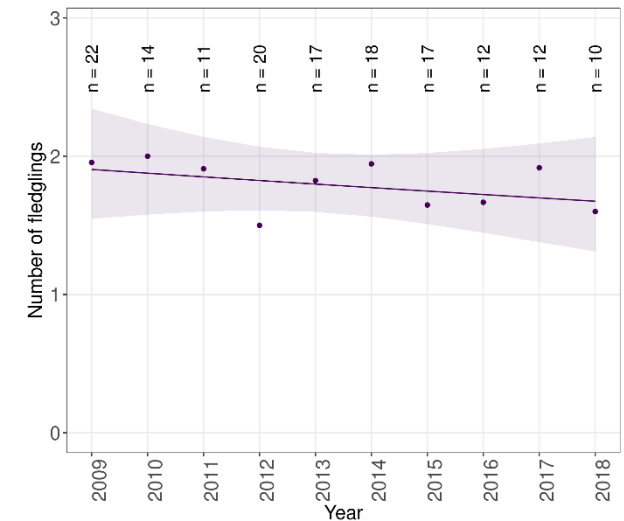


Central trend: Not significant (caveats: Expanding population)

No trend available
for clutch size

No trend available
for brood size

Trend in Number of fledglings of Red Kite in Central using SRMS data

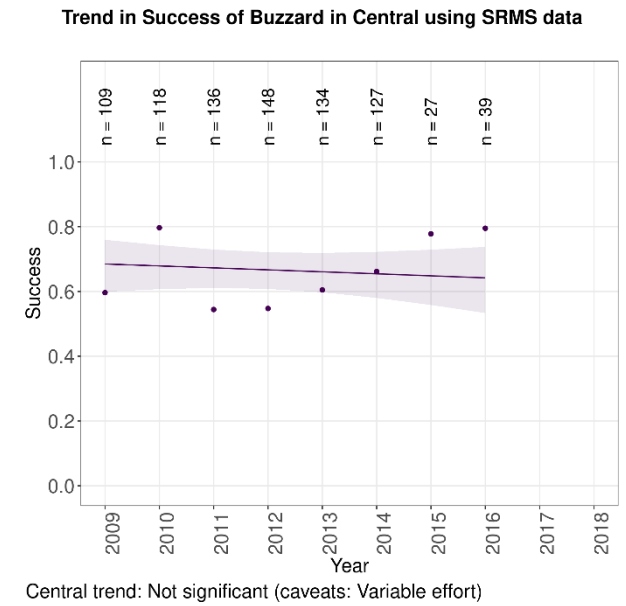


Central trend: Not significant (caveats: Sample sizes small)

Figure 4: Trends in breeding pairs, success, clutch size, brood size and the number of fledglings of Red Kite in Central during 2009-2018.



No trend available
for breeding pairs



No trend available
for clutch size

No trend available
for brood size

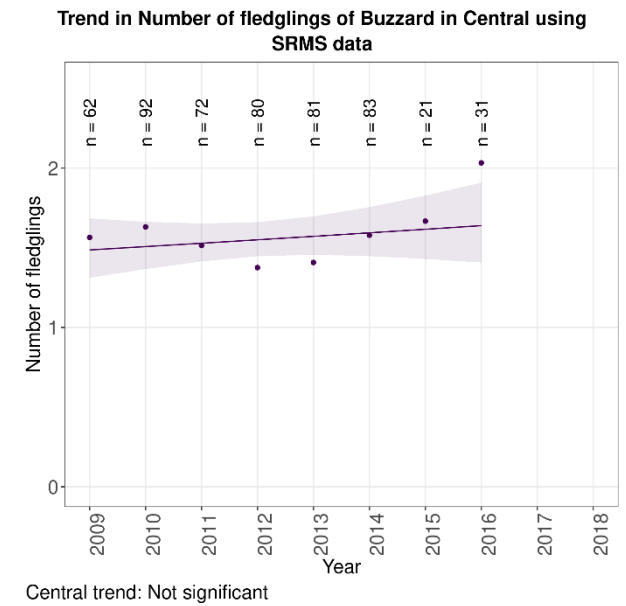
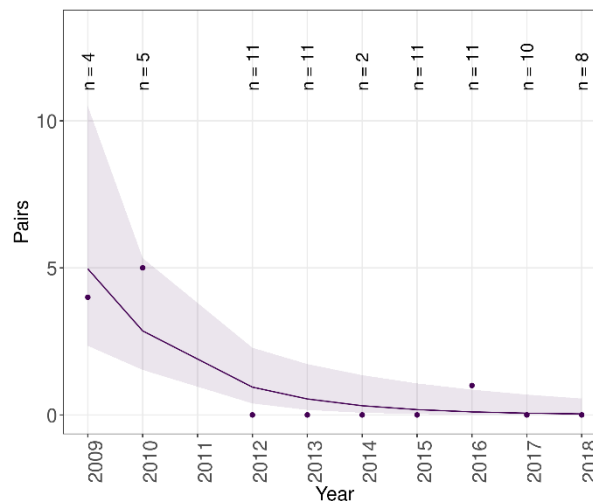


Figure 5: Trends in breeding pairs, success, clutch size, brood size and the number of fledglings of Buzzard in Central during 2009-2018.

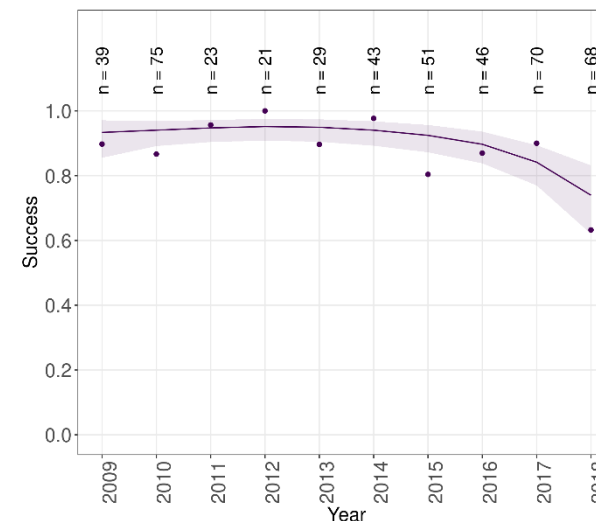


Trend in Pairs of Barn Owl in Central using SRMS data



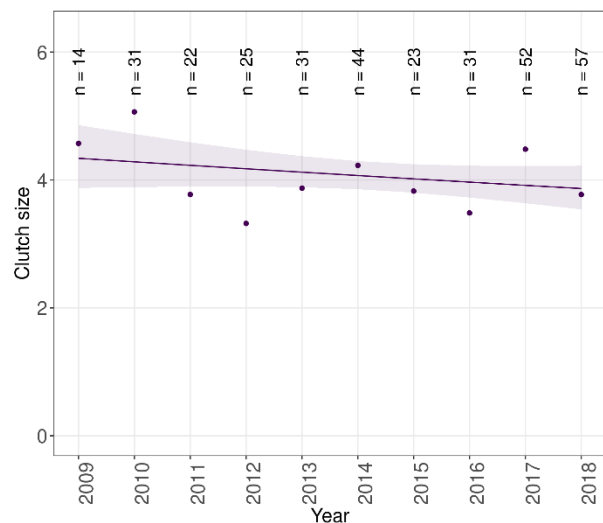
Central trend: Decrease (caveats: Sample sizes small, Nestbox based)

Trend in Success of Barn Owl in Central using SRMS data



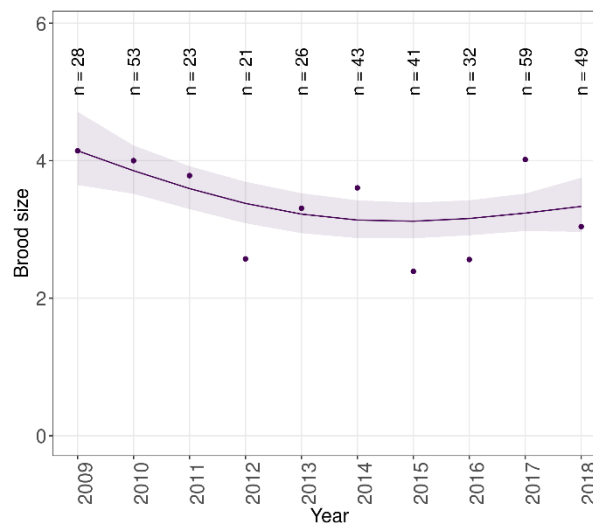
Central trend: Decrease (caveats: Nestbox based)

Trend in Clutch size of Barn Owl in Central using SRMS data



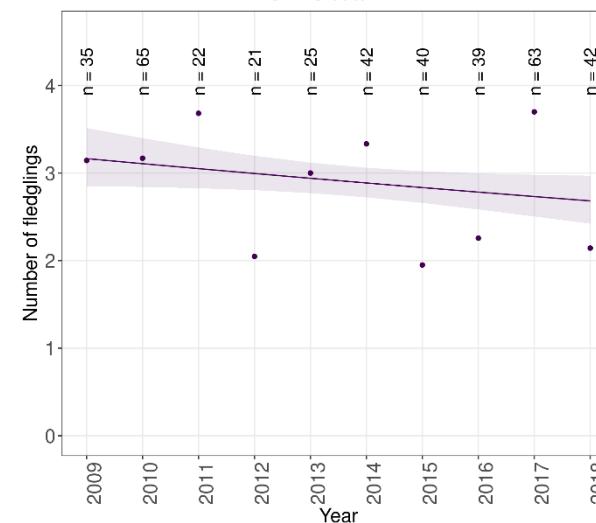
Central trend: Not significant

Trend in Brood size of Barn Owl in Central using SRMS data



Central trend: Decrease

Trend in Number of fledglings of Barn Owl in Central using SRMS data

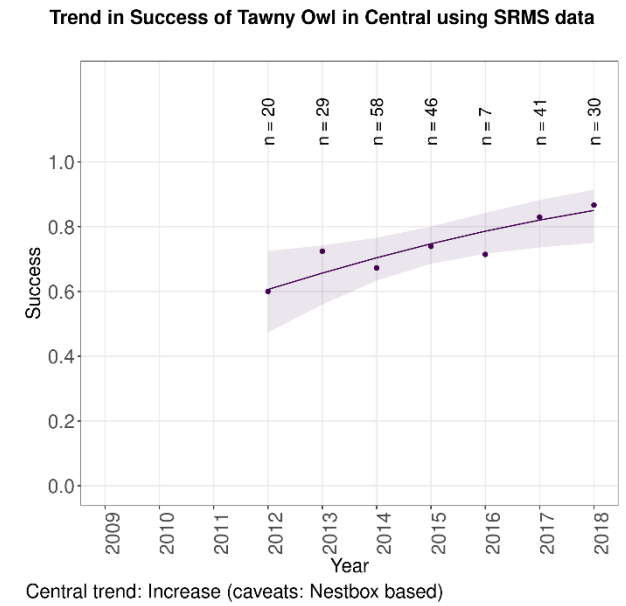


Central trend: Not significant

Figure 6: Trends in breeding pairs, success, clutch size, brood size and the number of fledglings of Barn Owl in Central during 2009-2018.



No trend available
for breeding pairs



No trend available
for clutch size

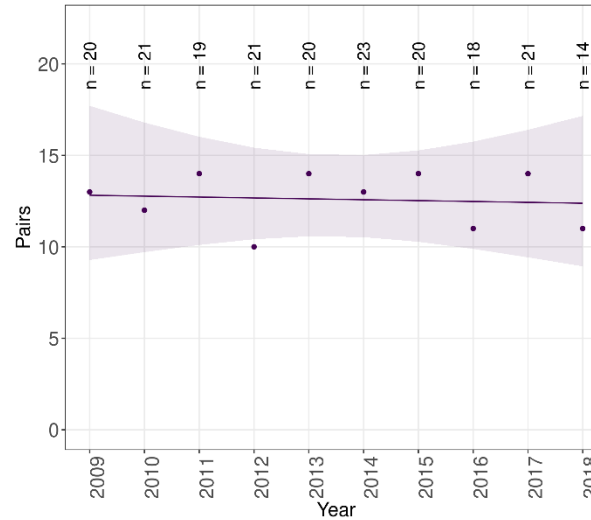
No trend available
for brood size

No trend available
for number of fledglings

Figure 7: Trends in breeding pairs, success, clutch size, brood size and the number of fledglings of Tawny Owl in Central during 2009-2018.

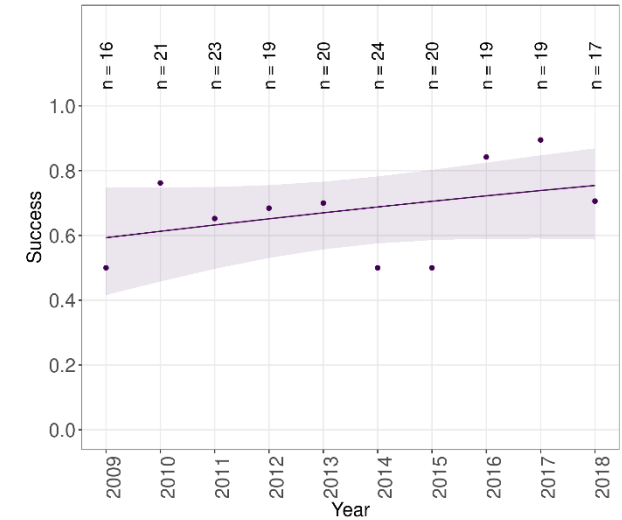


Trend in Pairs of Peregrine in Central using SRMS data



Central trend: Not significant (caveats: Sample sizes small)

Trend in Success of Peregrine in Central using SRMS data

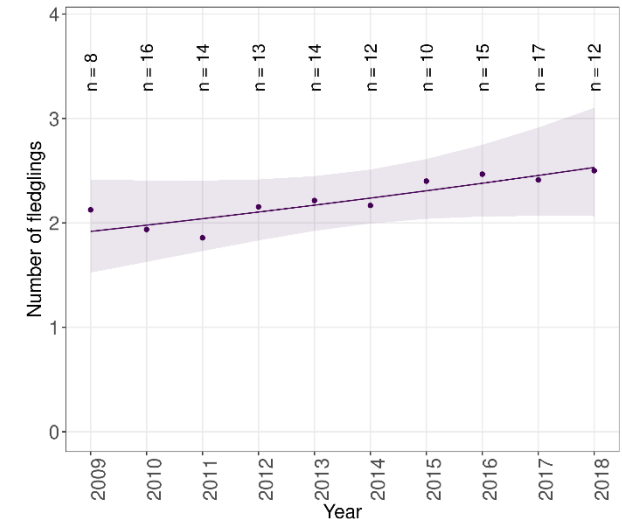


Central trend: Not significant (caveats: Sample sizes small)

No trend available
for clutch size

No trend available
for brood size

Trend in Number of fledglings of Peregrine in Central using SRMS data



Central trend: Not significant (caveats: Sample sizes small)

Figure 8: Trends in breeding pairs, success, clutch size, brood size and the number of fledglings of Peregrine in Central during 2009-2018.

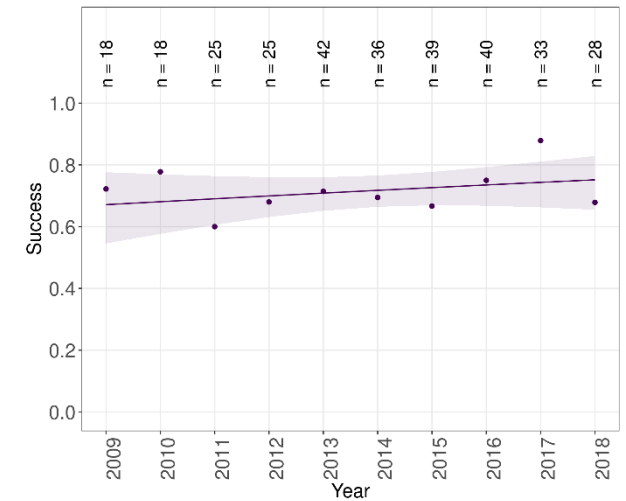


No trend available
for breeding pairs

No trend available
for clutch size

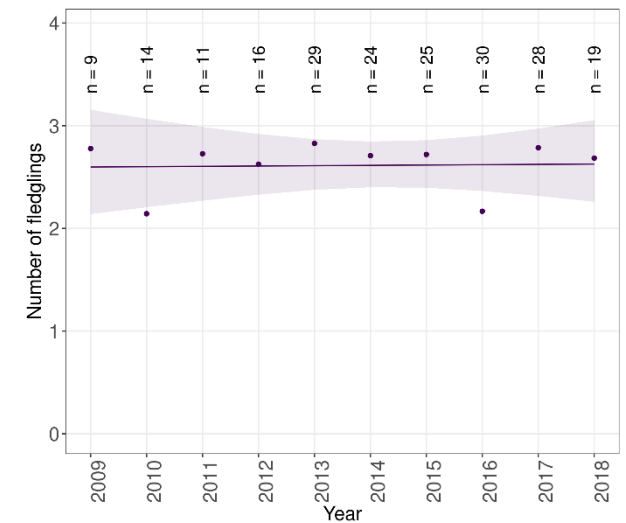
No trend available
for brood size

Trend in Success of Raven in Central using SRMS data



Central trend: Not significant (caveats: No home range random effect)

Trend in Number of fledglings of Raven in Central using SRMS data



Central trend: Not significant

Figure 9: Trends in breeding pairs, success, clutch size, brood size and the number of fledglings of Raven in Central during 2009-2018.