

Highland

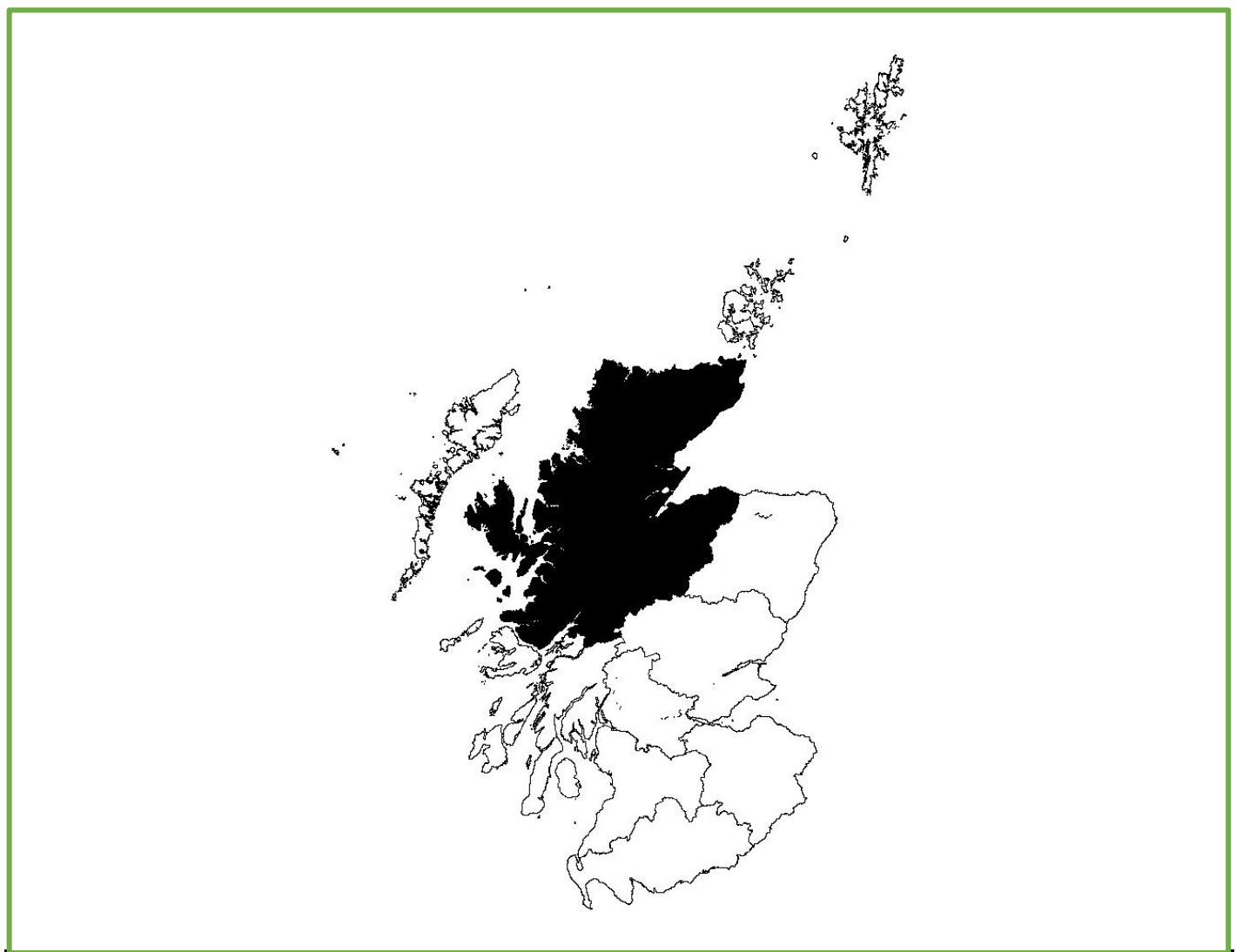


Figure 1: Highland.

Trends in breeding numbers are available for eight species and trends in breeding success for eight of the 14 species for which the SRMS holds records for Highland (Table 1).

Osprey

The number of breeding pairs increased significantly (+4.9%) while breeding success showed no significant change. No trends are available for clutch size or brood size but the number of fledglings showed no significant change (Figure 2).

Golden Eagle

The number of breeding pairs and breeding success showed no significant change. No trends are available for clutch size or brood size but the number of fledglings showed no significant change (Figure 336).

Hen Harrier

The number of breeding pairs decreased significantly (-9.4%) while breeding success showed no significant change. No trends are available for clutch size, brood size or the number of fledglings (Figure 4).

Red Kite

The number of breeding pairs decreased significantly (-10.8%) while breeding success showed no significant change. No trends are available for clutch size or brood size but the number of fledglings showed no significant change (Figure 5).

White-tailed Eagle

The number of breeding pairs and breeding success showed no significant change. Trends in clutch size, brood size and the number of fledglings all showed no significant change (Figure 6).

Buzzard

The number of breeding pairs and breeding success showed no significant change. Trends in clutch size, brood size and the number of fledglings all showed no significant change (Figure 7).

Tawny Owl

The number of breeding pairs and breeding success showed no significant change. Trends in clutch size, brood size and the number of fledglings all showed no significant change (Figure 8).

Merlin

The number of breeding pairs showed no significant change. No trends are available for breeding success, clutch size, brood size or the number of fledglings (Figure 9).

Raven

No trend is available for the number of breeding pairs. Breeding success showed no significant change. No trends are available for clutch size or brood size but the number of fledglings showed no significant change (Figure 10).

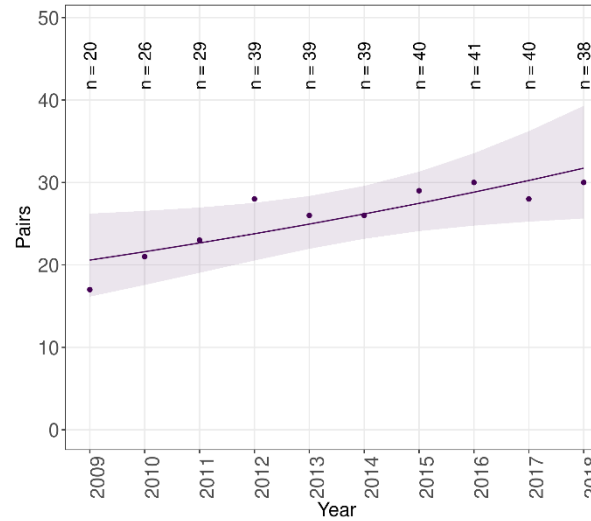
Table 1: Summary of SRMS trends for Highland during 2009-2018. Figures in parentheses indicate the annual change, with significant increases highlighted in green, significant decreases highlighted in blue and non-significant changes highlighted in grey. ‘—’ indicates where the species occurs but no trend is available.

| Species: | Pairs | Success | Clutch size | Brood size | Number of fledglings |
|--------------------|-------------------------------|------------------------------|------------------------------|------------------------------|------------------------------|
| Osprey | Increase (4.9%) | Not significant | — | — | Not significant |
| Golden Eagle | Not significant | Not significant | — | — | Not significant |
| Sparrowhawk | — | — | — | — | — |
| Goshawk | — | — | — | — | — |
| Hen Harrier | Decrease (-9.4%) | Not significant ^s | — | — | — |
| Red Kite | Decrease (-10.8%) | Not significant ^x | — | — | Not significant |
| White-tailed Eagle | Not significant ^{ax} | Not significant ^x | Not significant ^s | Not significant ^s | Not significant ^s |
| Buzzard | Not significant | Not significant ^r | Not significant | Not significant | Not significant |
| Barn Owl | — | — | — | — | — |
| Tawny Owl | Not significant ^{ns} | Not significant ⁿ | Not significant | Not significant ^s | Not significant ^s |
| Kestrel | — | — | — | — | — |
| Merlin | Not significant | — | — | — | — |
| Peregrine | — | — | — | — | — |
| Raven | — | Not significant ^s | — | — | Not significant ^s |

^a All data used, ⁿ Nestbox based, ^r No home range random effect, ^s Sample sizes small, ^x Expanding population.

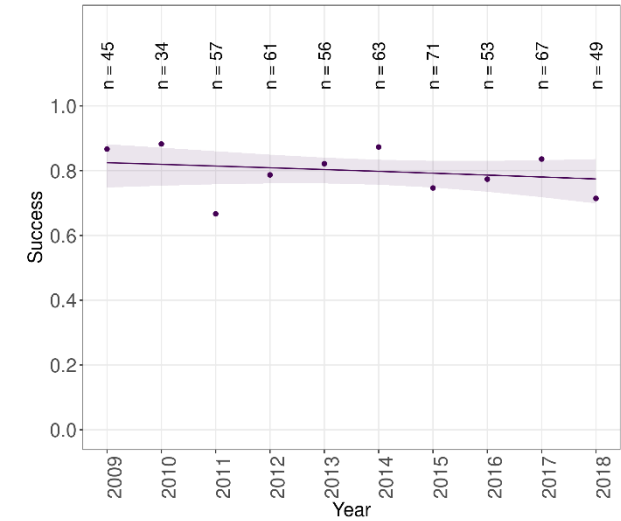


Trend in Pairs of Osprey in Highland using SRMS data



Highland trend: Increase

Trend in Success of Osprey in Highland using SRMS data

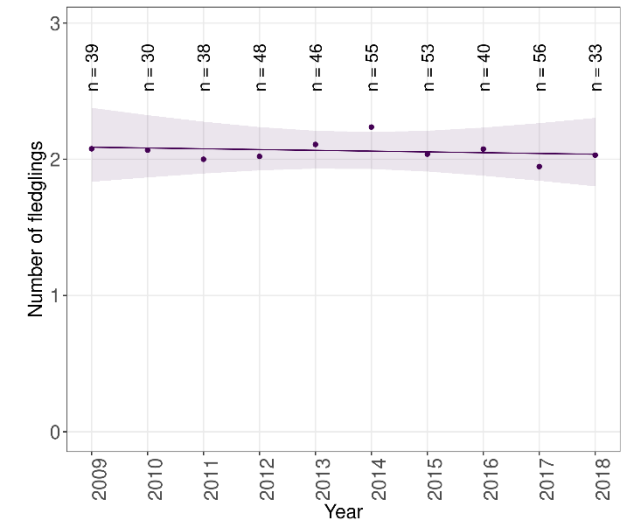


Highland trend: Not significant

No trend available
for clutch size

No trend available
for brood size

Trend in Number of fledglings of Osprey in Highland using SRMS data

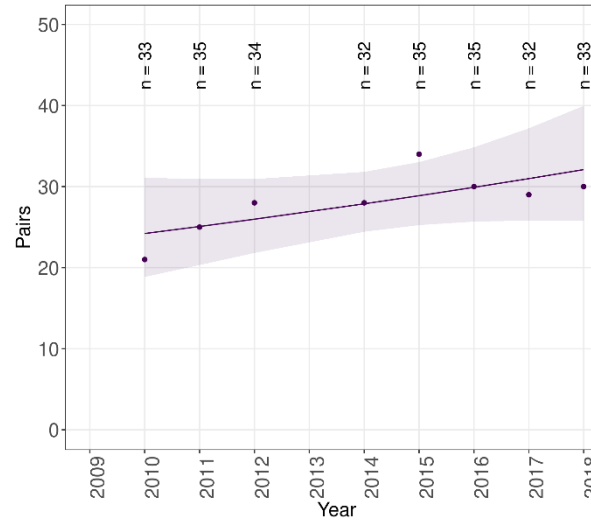


Highland trend: Not significant

Figure 2: Trends in breeding pairs, success, clutch size, brood size and the number of fledglings of Osprey in Highland during 2009-2018.

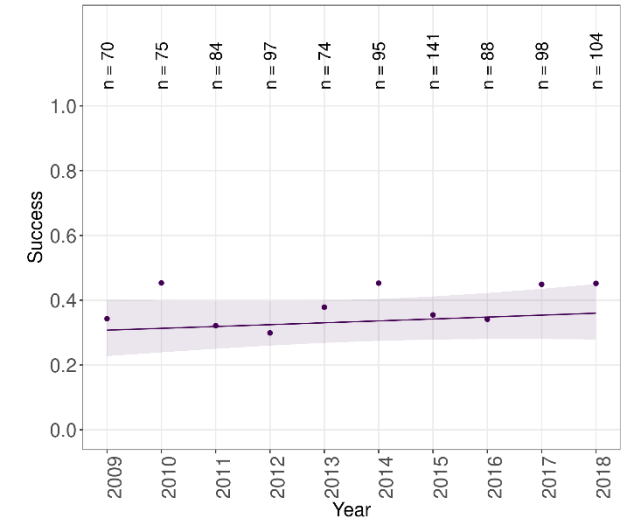


Trend in Pairs of Golden Eagle in Highland using SRMS data



Highland trend: Not significant

Trend in Success of Golden Eagle in Highland using SRMS data

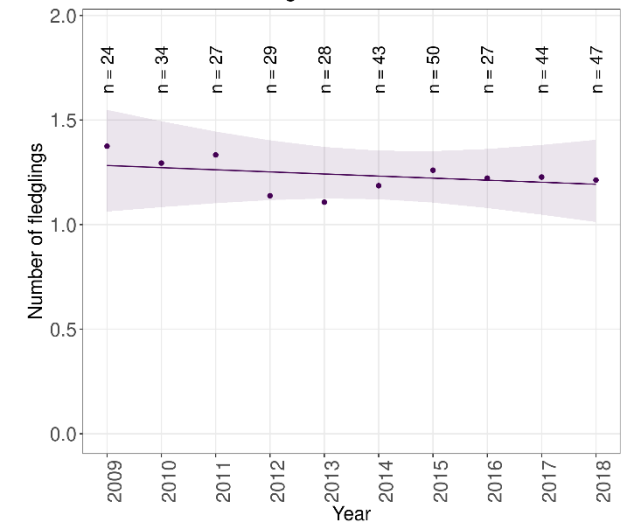


Highland trend: Not significant

No trend available
for clutch size

No trend available
for brood size

Trend in Number of fledglings of Golden Eagle in Highland using SRMS data

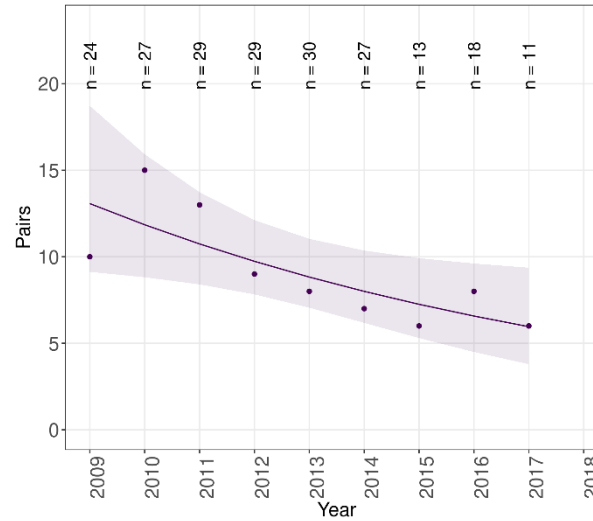


Highland trend: Not significant

Figure 3: Trends in breeding pairs, success, clutch size, brood size and the number of fledglings of Golden Eagle in Highland during 2009-2018.

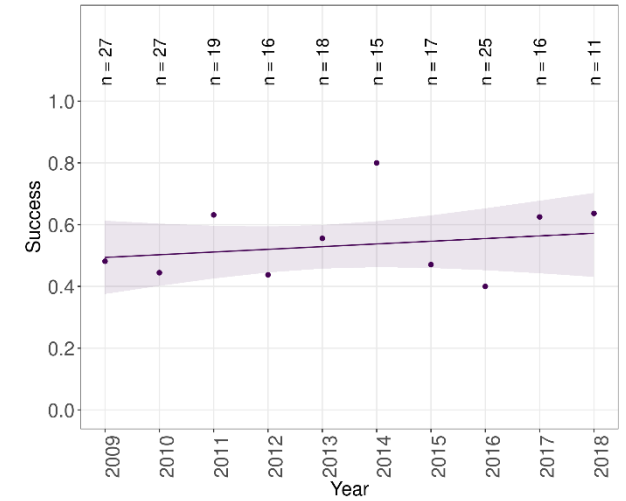


Trend in Pairs of Hen Harrier in Highland using SRMS data



Highland trend: Decrease

Trend in Success of Hen Harrier in Highland using SRMS data



Highland trend: Not significant (caveats: Sample sizes small)

No trend available
for clutch size

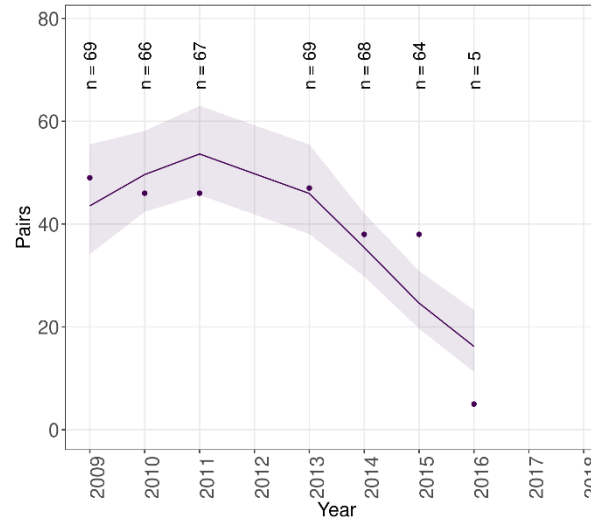
No trend available
for brood size

No trend available
for number of fledglings

Figure 4: Trends in breeding pairs, success, clutch size, brood size and the number of fledglings of Hen Harrier in Highland during 2009-2018.

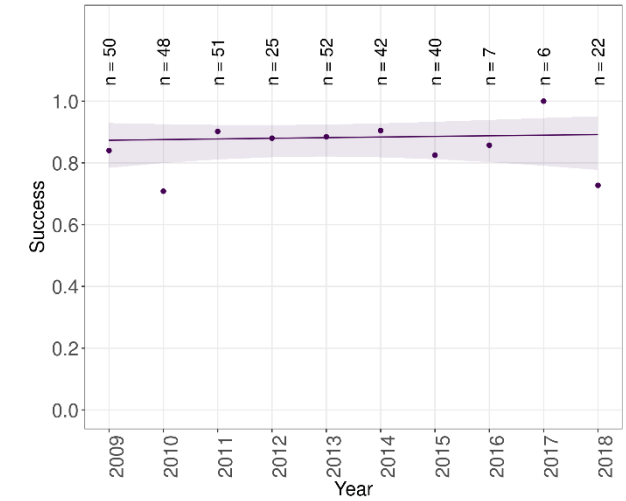


Trend in Pairs of Red Kite in Highland using SRMS data



Highland trend: Decrease

Trend in Success of Red Kite in Highland using SRMS data

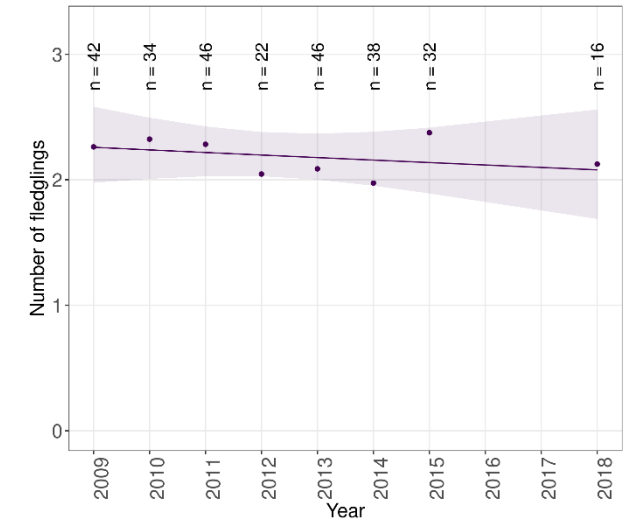


Highland trend: Not significant (caveats: Expanding population)

No trend available
for clutch size

No trend available
for brood size

Trend in Number of fledglings of Red Kite in Highland using SRMS data

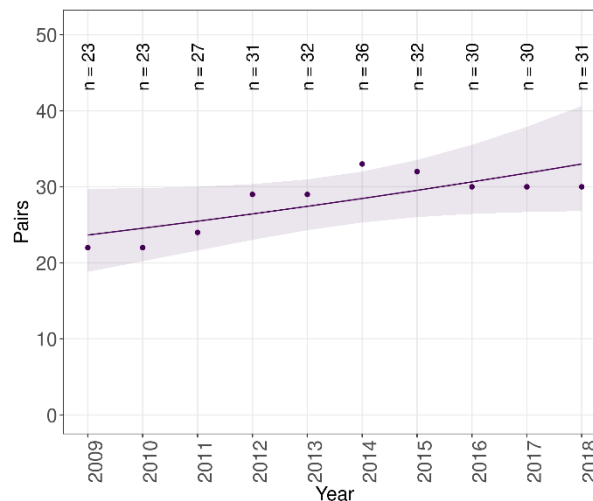


Highland trend: Not significant

Figure 5: Trends in breeding pairs, success, clutch size, brood size and the number of fledglings of Red Kite in Highland during 2009-2018.

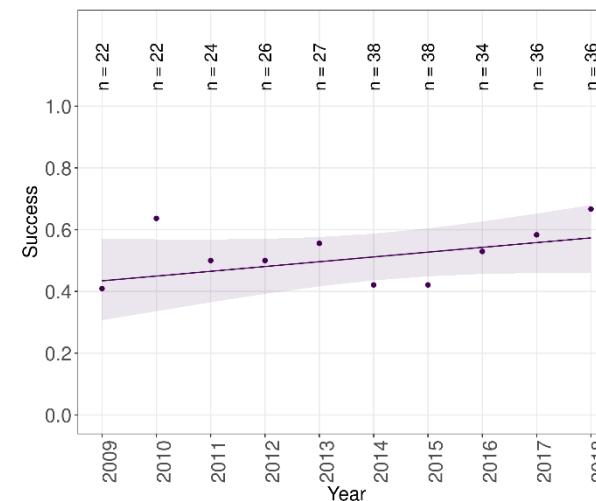


Trend in Pairs of White-tailed Eagle in Highland using SRMS data



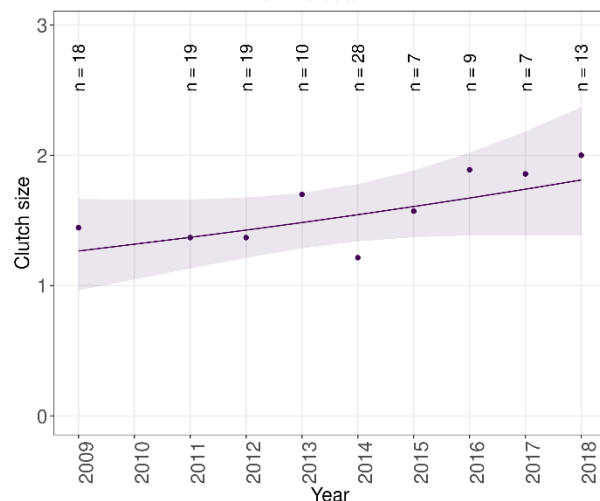
Highland trend: Not significant (caveats: Expanding population, All data used)

Trend in Success of White-tailed Eagle in Highland using SRMS data



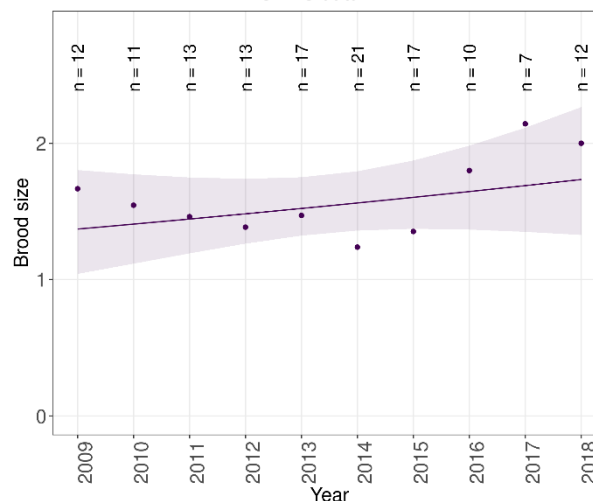
Highland trend: Not significant (caveats: Expanding population)

Trend in Clutch size of White-tailed Eagle in Highland using SRMS data



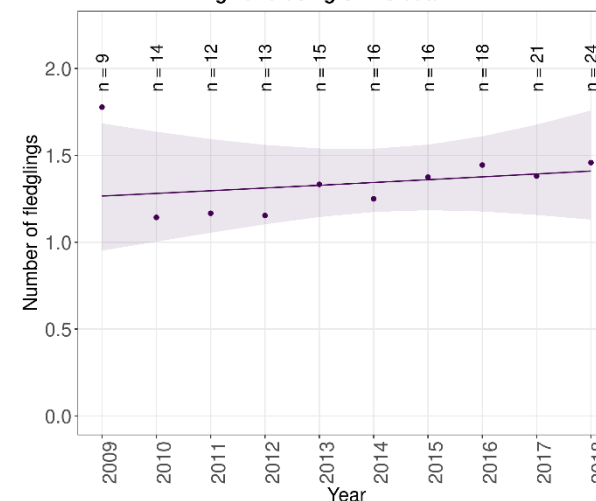
Highland trend: Not significant (caveats: Sample sizes small)

Trend in Brood size of White-tailed Eagle in Highland using SRMS data



Highland trend: Not significant (caveats: Sample sizes small)

Trend in Number of fledglings of White-tailed Eagle in Highland using SRMS data

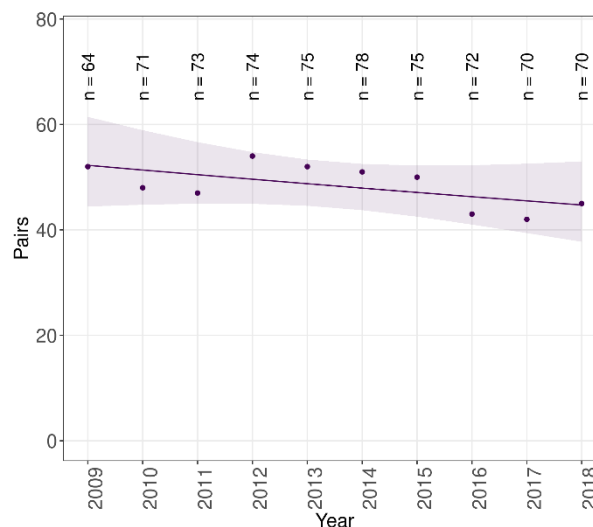


Highland trend: Not significant (caveats: Sample sizes small)

Figure 6: Trends in breeding pairs, success, clutch size, brood size and the number of fledglings of White-tailed Eagle in Highland during 2009-2018.

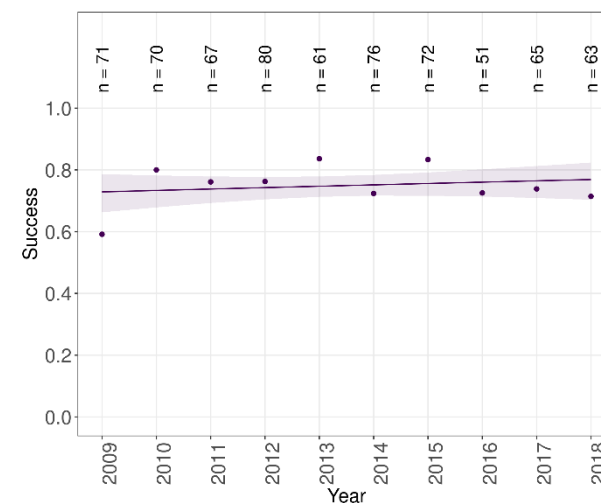


Trend in Pairs of Buzzard in Highland using SRMS data



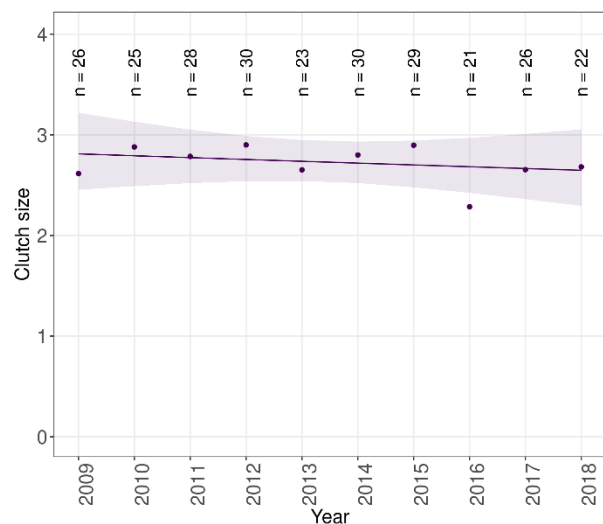
Highland trend: Not significant

Trend in Success of Buzzard in Highland using SRMS data



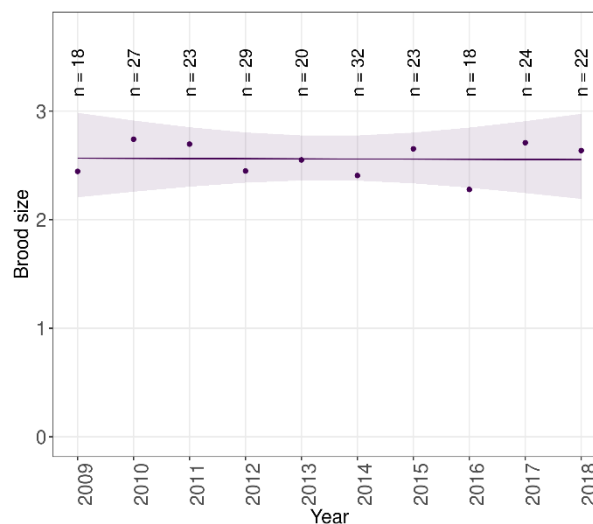
Highland trend: Not significant (caveats: No home range random effect)

Trend in Clutch size of Buzzard in Highland using SRMS data



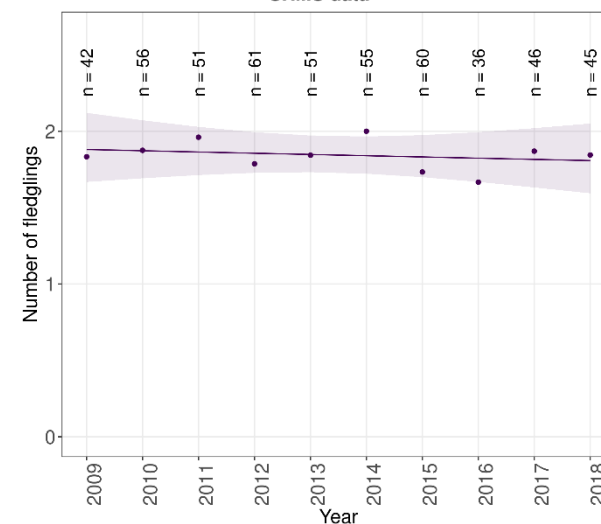
Highland trend: Not significant

Trend in Brood size of Buzzard in Highland using SRMS data



Highland trend: Not significant

Trend in Number of fledglings of Buzzard in Highland using SRMS data

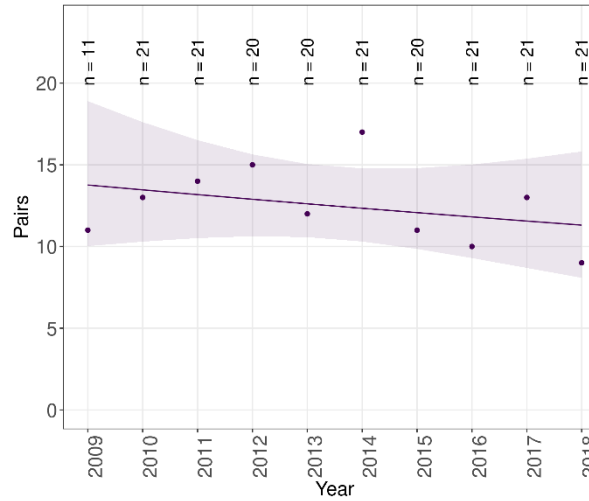


Highland trend: Not significant

Figure 7: Trends in breeding pairs, success, clutch size, brood size and the number of fledglings of Buzzard in Highland during 2009-2018.

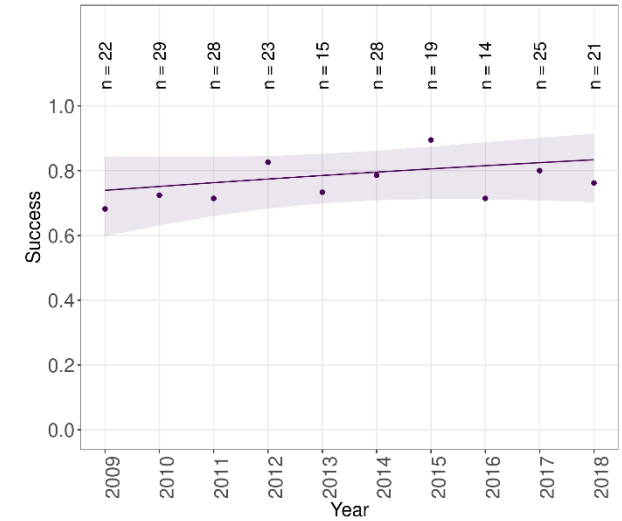


Trend in Pairs of Tawny Owl in Highland using SRMS data



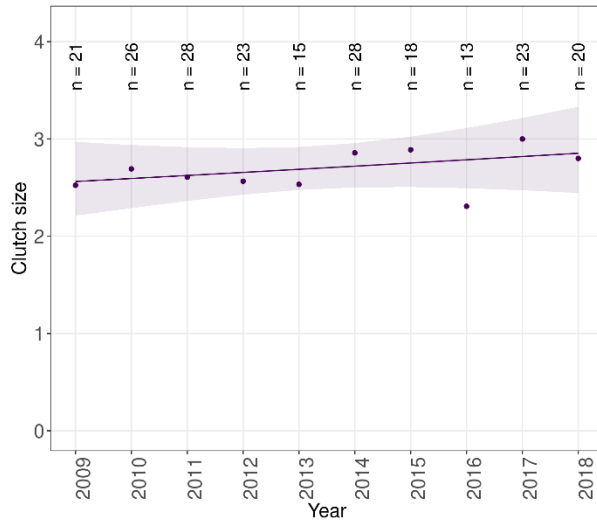
Highland trend: Not significant (caveats: Sample sizes small, Nestbox based)

Trend in Success of Tawny Owl in Highland using SRMS data



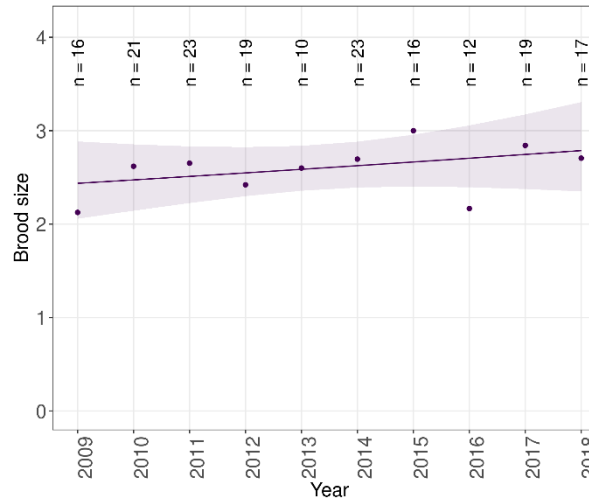
Highland trend: Not significant (caveats: Nestbox based)

Trend in Clutch size of Tawny Owl in Highland using SRMS data



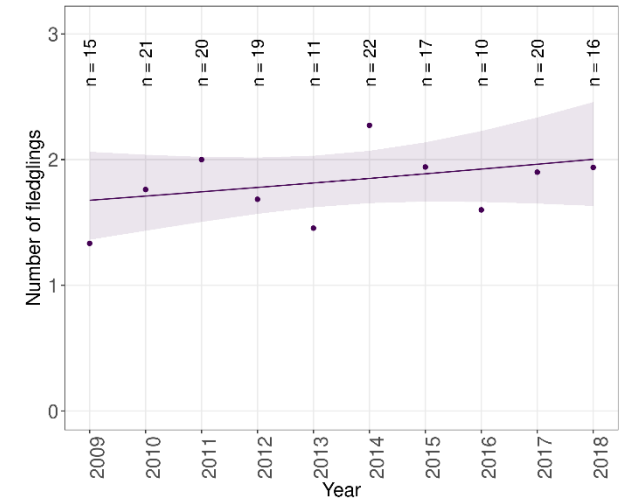
Highland trend: Not significant

Trend in Brood size of Tawny Owl in Highland using SRMS data



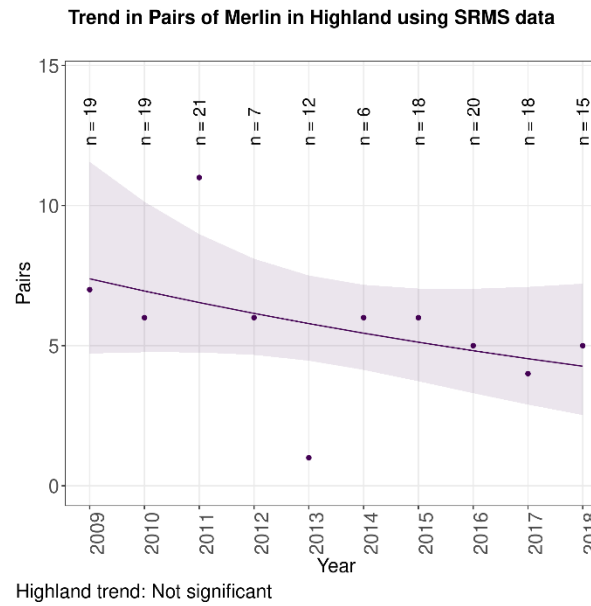
Highland trend: Not significant (caveats: Sample sizes small)

Trend in Number of fledglings of Tawny Owl in Highland using SRMS data



Highland trend: Not significant (caveats: Sample sizes small)

Figure 8: Trends in breeding pairs, success, clutch size, brood size and the number of fledglings of Tawny Owl in Highland during 2009-2018.



No trend available
for breeding success

No trend available
for clutch size

No trend available
for brood size

No trend available
for number of fledglings

Figure 9: Trends in breeding pairs, success, clutch size, brood size and the number of fledglings of Merlin Highland during 2009-2018.

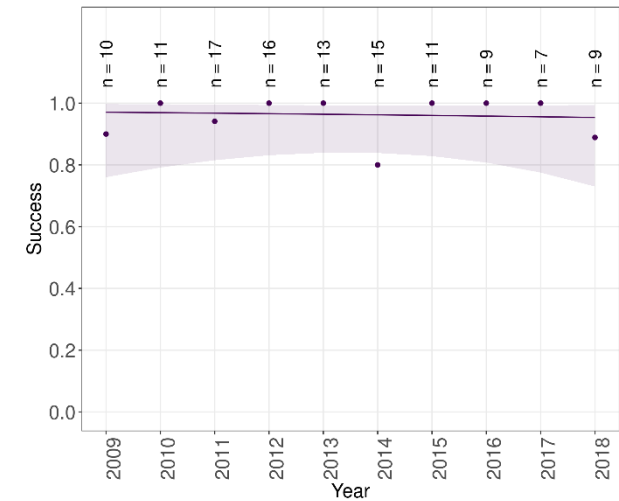


No trend available
for breeding pairs

No trend available
for clutch size

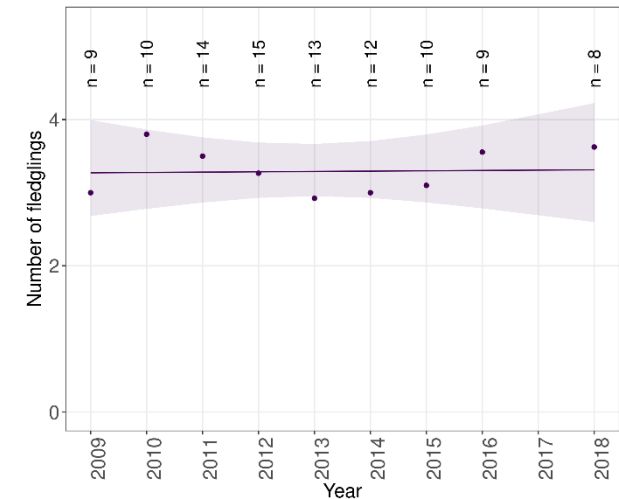
No trend available
for brood size

Trend in Success of Raven in Highland using SRMS data



Highland trend: Not significant (caveats: Sample sizes small)

Trend in Number of fledglings of Raven in Highland using SRMS data



Highland trend: Not significant (caveats: Sample sizes small)

Figure 10: Trends in breeding pairs, success, clutch size, brood size and the number of fledglings of Raven in Highland during 2009-2018.