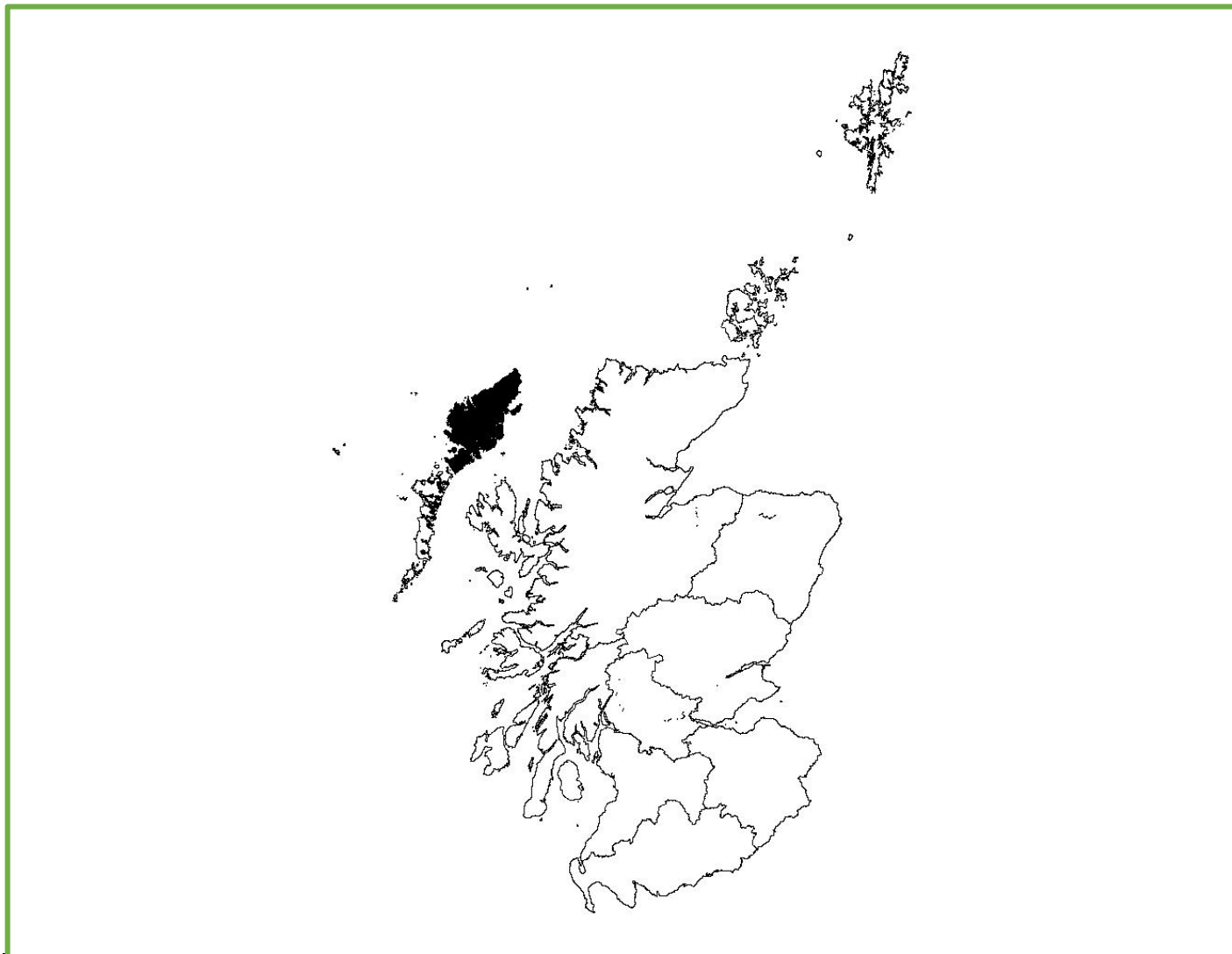


## Lewis & Harris



**Figure 1:** Lewis & Harris.

Trends in breeding numbers are available for one species and trends in breeding success for two of the nine species for which the SRMS holds records for Lewis & Harris (Table 1).

### *Golden Eagle*

No trend is available for the number of breeding pairs. Breeding success showed no significant change. No trends are available for clutch size, brood size or the number of fledglings (Figure 2).

### *White-tailed Eagle*

The number of breeding pairs and breeding success showed no significant change. No trends are available for clutch size, brood size or the number of fledglings (Figure 3).

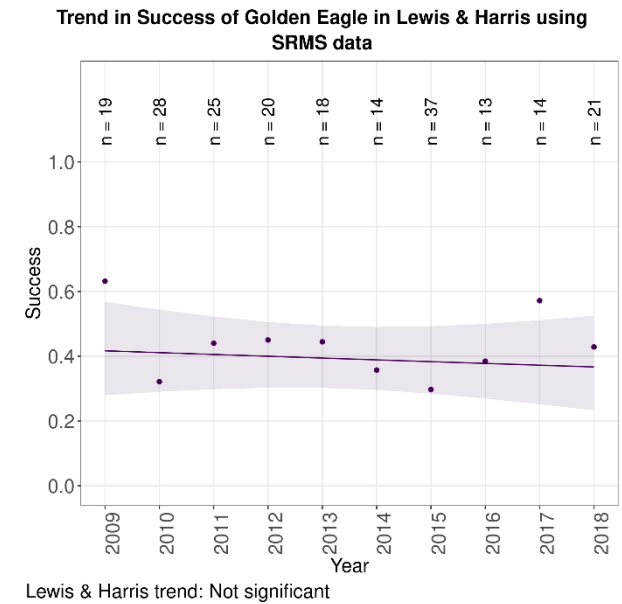
**Table 1:** Summary of SRMS trends for Lewis & Harris during 2009-2018. Non-significant changes are highlighted in grey. ‘—’ indicates where the species occurs but no trend is available. ‘Absent’ indicates where the species is not known to breed.

<b>Species:</b>	<b>Pairs</b>	<b>Success</b>	<b>Clutch size</b>	<b>Brood size</b>	<b>Number of fledglings</b>
Osprey	Absent	Absent	Absent	Absent	Absent
Golden Eagle	—	Not significant	—	—	—
Sparrowhawk	—	—	—	—	—
Goshawk	Absent	Absent	Absent	Absent	Absent
Hen Harrier	—	—	—	—	—
Red Kite	Absent	Absent	Absent	Absent	Absent
White-tailed Eagle	Not significant <sup>asx</sup>	Not significant <sup>sx</sup>	—	—	—
Buzzard	—	—	—	—	—
Barn Owl	Absent	Absent	Absent	Absent	Absent
Tawny Owl	Absent	Absent	Absent	Absent	Absent
Kestrel	—	—	—	—	—
Merlin	—	—	—	—	—
Peregrine	—	—	—	—	—
Raven	—	—	—	—	—

<sup>a</sup> All data used, <sup>s</sup> Sample sizes small, <sup>x</sup> Expanding population.



No trend available  
for breeding pairs



No trend available  
for clutch size

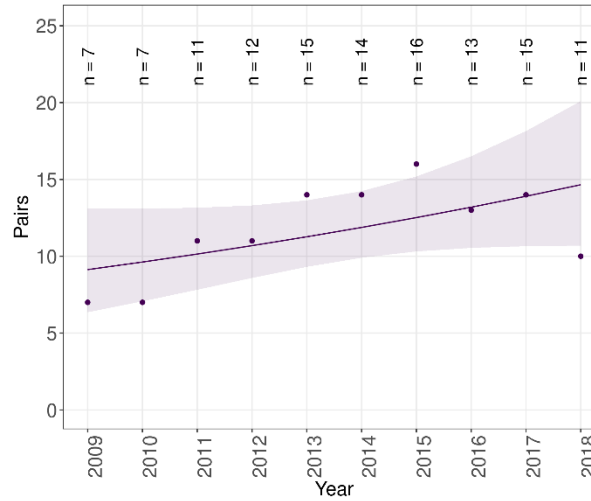
No trend available  
for brood size

No trend available  
for number of fledglings

**Figure 2:** Trends in breeding pairs, success, clutch size, brood size and the number of fledglings of Golden Eagle in Lewis & Harris during 2009-2018.



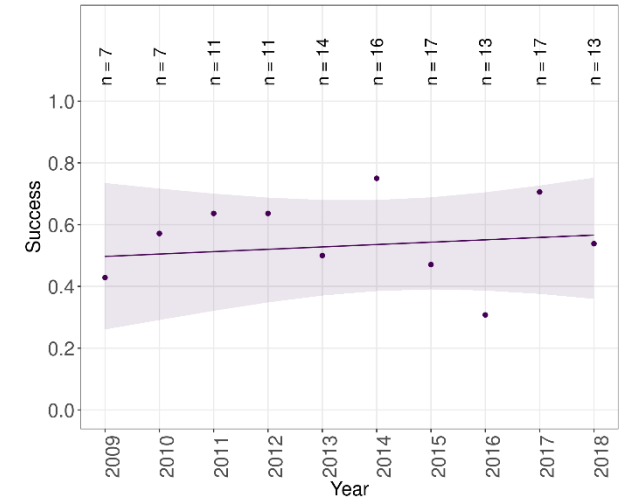
Trend in Pairs of White-tailed Eagle in Lewis & Harris using SRMS data



Lewis & Harris trend: Not significant (caveats: Expanding population, Sample sizes small, All data used)

No trend available  
for clutch size

Trend in Success of White-tailed Eagle in Lewis & Harris using SRMS data



Lewis & Harris trend: Not significant (caveats: Sample sizes small; Expanding population)

No trend available  
for brood size

No trend available  
for number of fledglings

**Figure 3:** Trends in breeding pairs, success, clutch size, brood size and the number of fledglings of White-tailed Eagle in Lewis & Harris during 2009-2018.