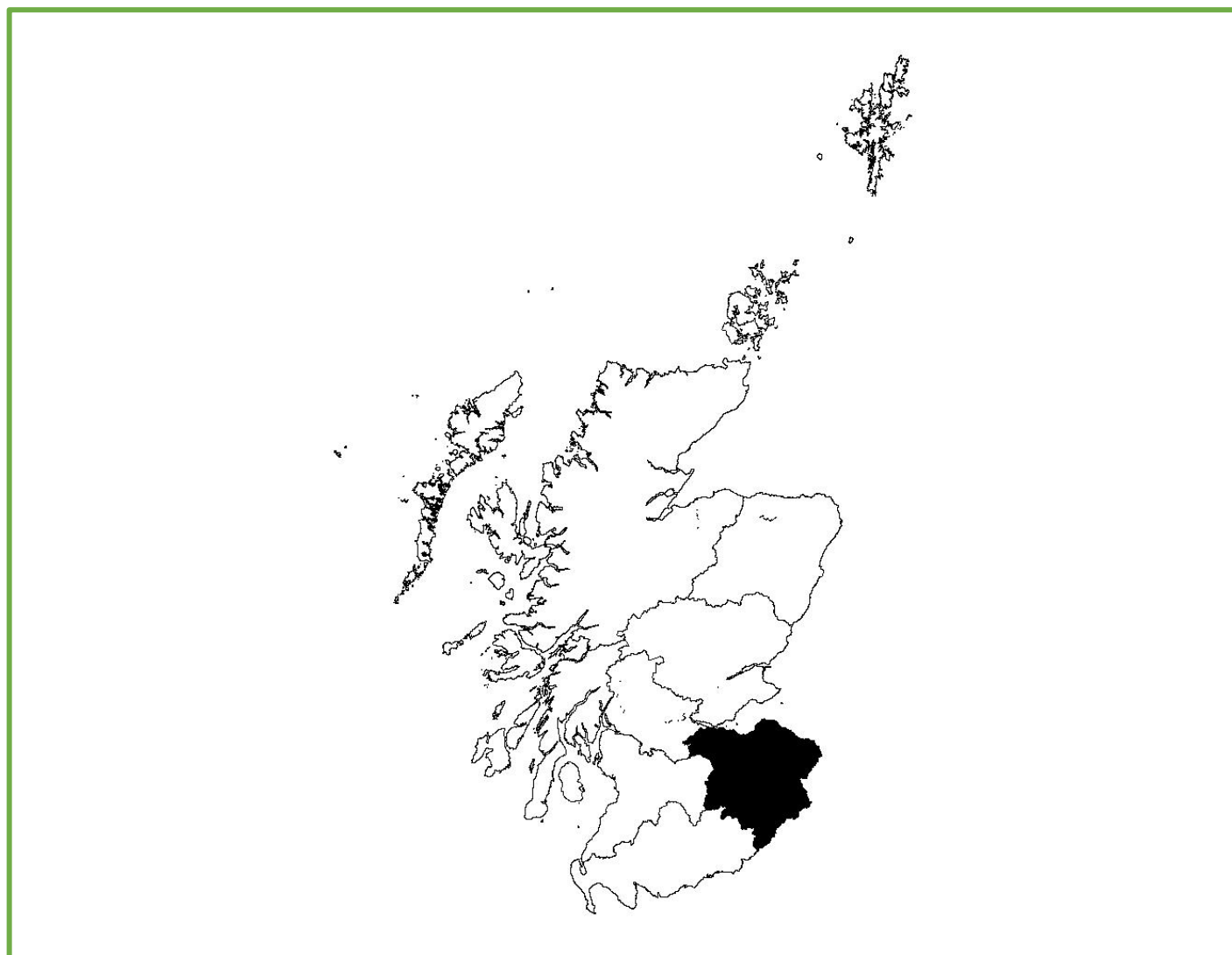


## Lothian & Borders



**Figure 1:** Lothian & Borders.

Trends in breeding numbers are available for three species and trends in breeding success for seven of the 13 species for which the SRMS holds records for Lothian & Borders (Table 1).

### *Osprey*

No trend is available for the number of breeding pairs. Breeding success decreased significantly (-1.7%). No trends are available for clutch size, brood size or the number of fledglings (Figure 2).

### *Goshawk*

No trend is available for the number of breeding pairs. Breeding success showed no significant change. No trends are available for clutch size or brood size but the number of fledglings showed no significant change (Figure 3).

### *Buzzard*

No trend is available for the number of breeding pairs. Breeding success, clutch size, brood size and the number of fledglings showed no significant change (Figure 4).

### *Barn Owl*

No trend is available for the number of breeding pairs. Breeding success showed no significant change. No trends are available for clutch size or brood size but the number of fledglings showed a significant decrease (-3.4%) (Figure 5).

### *Tawny Owl*

No trend is available for the number of breeding pairs. Breeding success increased significantly (+6.2%). Clutch size showed no significant change.

No trends are available for brood size or number of fledglings (Figure 6).

#### *Merlin*

No trend is available for the number of breeding pairs. No trends are available for breeding success, clutch size, brood size or the number of fledglings (Figure 7).

#### *Peregrine*

The number of breeding pairs showed no significant change while breeding success decreased significantly (-2.1%). Clutch size, brood size and the number of fledglings showed no significant change (Figure 8).

#### *Raven*

The number of breeding pairs and breeding success showed no significant change. No trends are available for clutch size or brood size but the number of fledglings showed no significant change (Figure 9).

**Table 1:** Summary of SRMS trends for Lothian & Borders during 2009-2018. Figures in parentheses indicate the annual change, with significant increases highlighted in green, significant decreases highlighted in blue and non-significant changes highlighted in grey. ‘—’ indicates where the species occurs but no trend is available. ‘Absent’ indicates where the species is not known to breed.

Species:	Pairs	Success	Clutch size	Brood size	Number of fledglings
Osprey	—	Decrease <sup>s</sup> (-1.7%)	—	—	—
Golden Eagle	—	—	—	—	—
Sparrowhawk	—	—	—	—	—
Goshawk	—	Not significant	—	—	Not significant
Hen Harrier	—	—	—	—	—
Red Kite	—	—	—	—	—
White-tailed Eagle	Absent	Absent	Absent	Absent	Absent
Buzzard	—	Not significant <sup>r</sup>	Not significant	Not significant	Not significant
Barn Owl	—	Not significant <sup>n</sup>	—	—	Decrease (-3.4%)
Tawny Owl	—	Increase <sup>ns</sup> (6.2%)	Not significant	—	—
Kestrel	—	—	—	—	—
Merlin	Not significant	—	—	—	—
Peregrine	Not significant	Decrease (-2.1%)	Not significant	Not significant <sup>s</sup>	Not significant
Raven	Not significant <sup>s</sup>	Not significant <sup>r</sup>	—	—	Not significant

<sup>a</sup> All data used, <sup>n</sup> Nestbox based, <sup>r</sup> No home range random effect, <sup>s</sup> Sample sizes small.

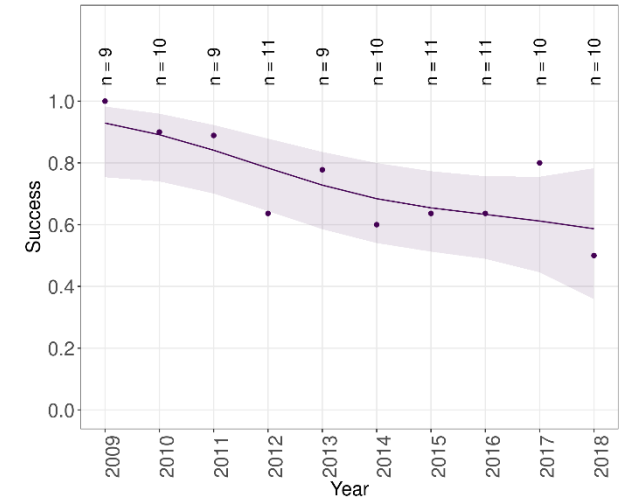


No trend available  
for breeding pairs

No trend available  
for clutch size

No trend available  
for brood size

Trend in Success of Osprey in Lothian & Borders using SRMS data



Lothian & Borders trend: Decrease (caveats: Sample sizes small)

No trend available  
for number of fledglings

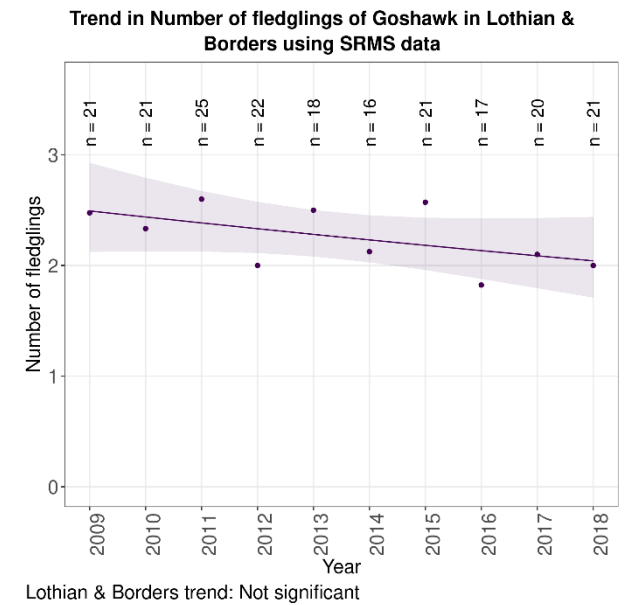
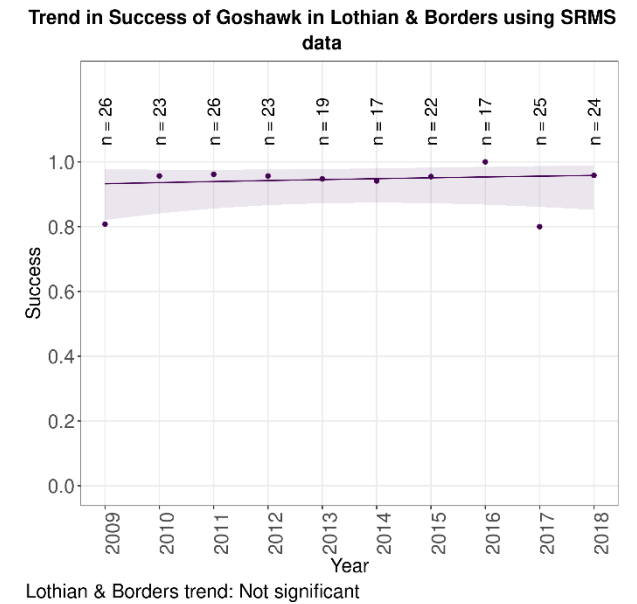
**Figure 2:** Trends in breeding pairs, success, clutch size, brood size and the number of fledglings of Osprey in Lothian & Borders during 2009-2018.



No trend available  
for breeding pairs

No trend available  
for clutch size

No trend available  
for brood size

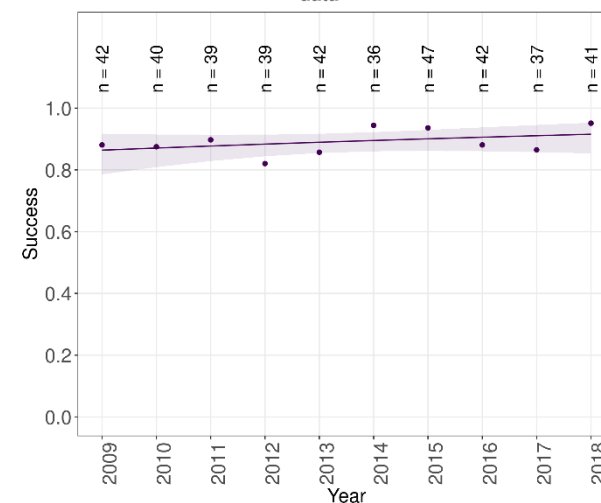


**Figure 3:** Trends in breeding pairs, success, clutch size, brood size and the number of fledglings of Goshawk in Lothian & Borders during 2009-2018.



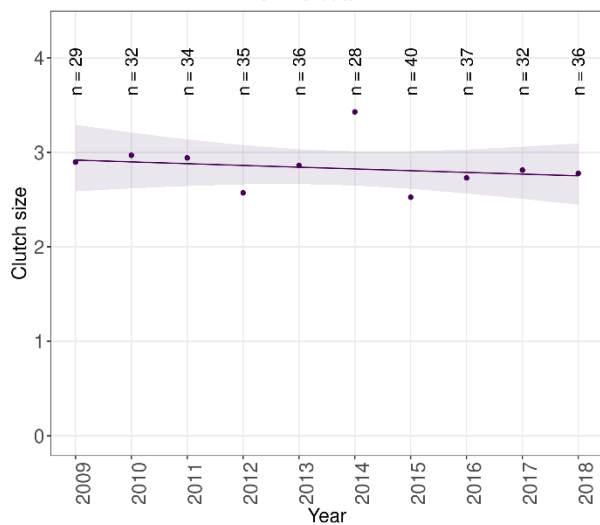
No trend available  
for breeding pairs

Trend in Success of Buzzard in Lothian & Borders using SRMS data



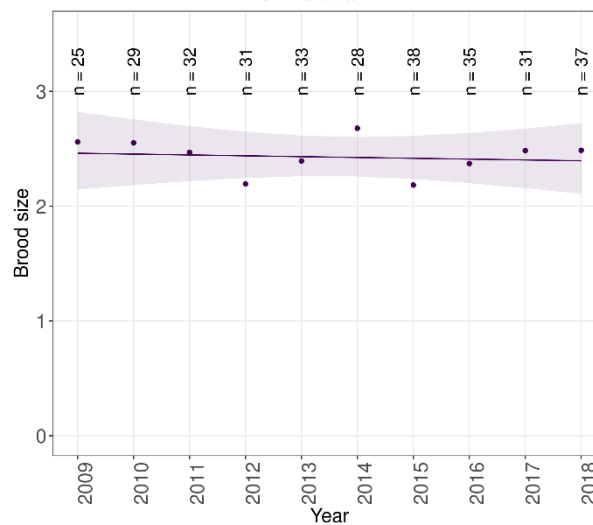
Lothian & Borders trend: Not significant (caveats: No home range random effect)

Trend in Clutch size of Buzzard in Lothian & Borders using SRMS data



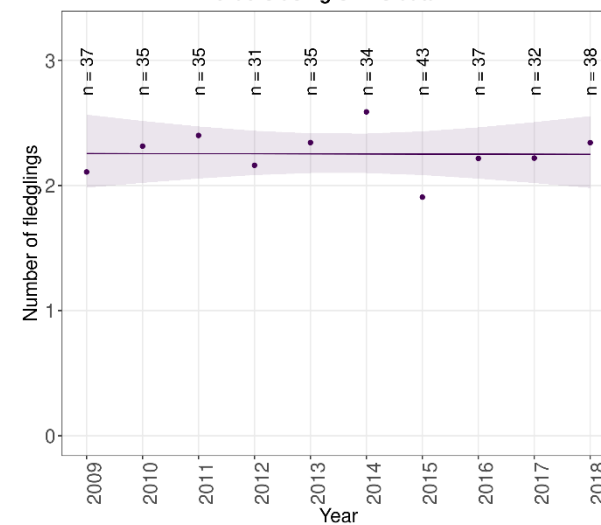
Lothian & Borders trend: Not significant

Trend in Brood size of Buzzard in Lothian & Borders using SRMS data



Lothian & Borders trend: Not significant

Trend in Number of fledglings of Buzzard in Lothian & Borders using SRMS data



Lothian & Borders trend: Not significant

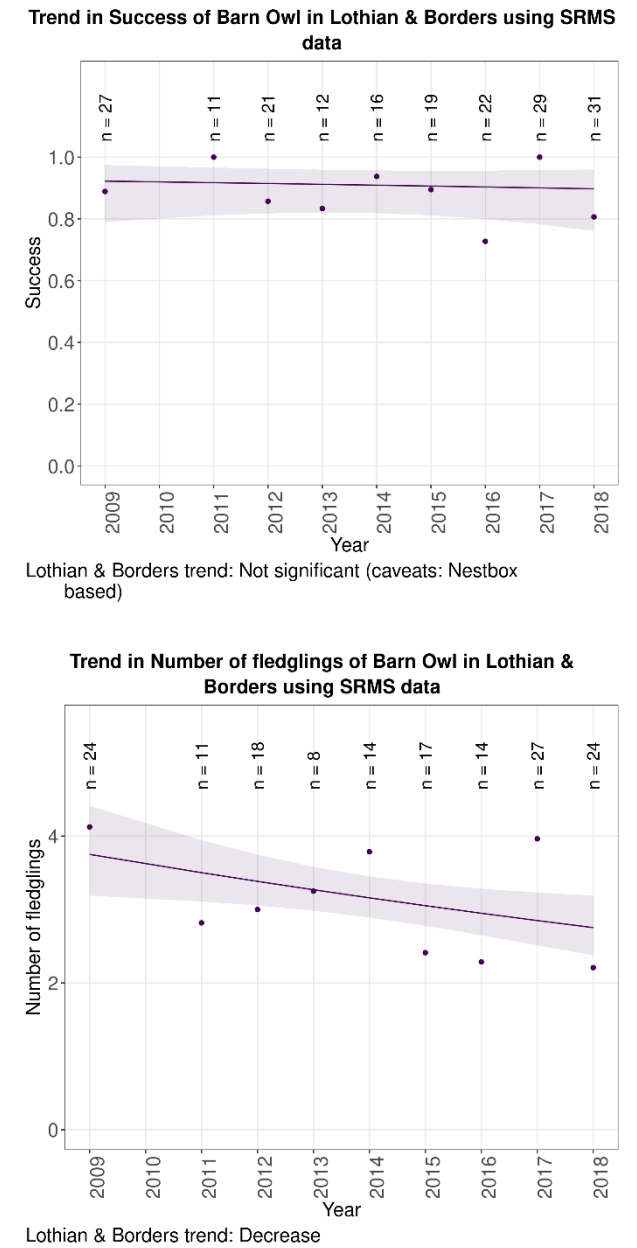
**Figure 4:** Trends in breeding pairs, success, clutch size, brood size and the number of fledglings of Buzzard in Lothian & Borders during 2009-2018.



No trend available  
for breeding pairs

No trend available  
for clutch size

No trend available  
for brood size

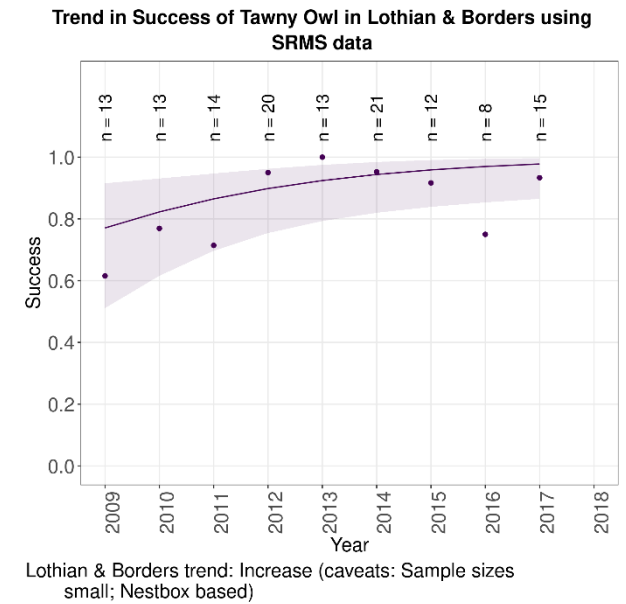


**Figure 5:** Trends in breeding pairs, success, clutch size, brood size and the number of fledglings of Barn Owl in Lothian & Borders during 2009-2018.

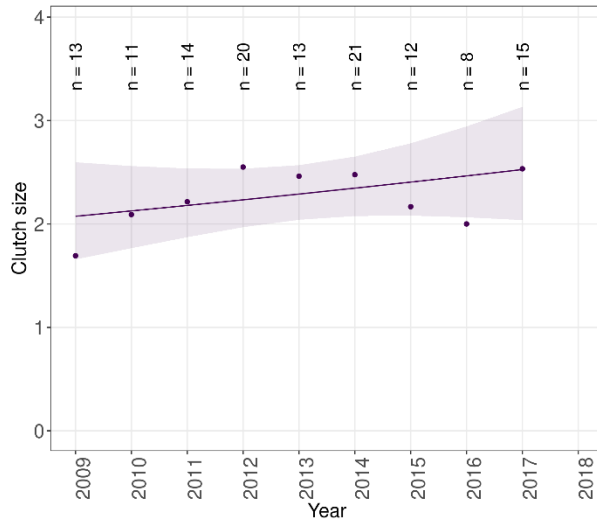




No trend available  
for breeding pairs



**Trend in Clutch size of Tawny Owl in Lothian & Borders using SRMS data**



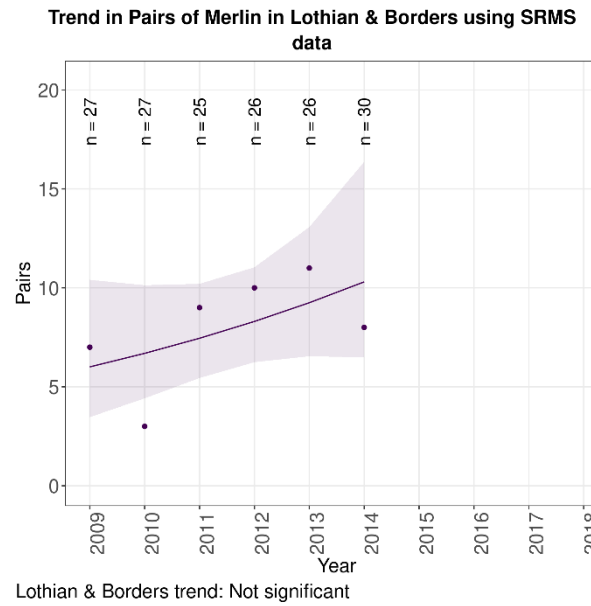
Lothian & Borders trend: Not significant

No trend available  
for brood size

No trend available  
for number of fledglings

**Figure 6:** Trends in breeding pairs, success, clutch size, brood size and the number of fledglings of Tawny Owl in Lothian & Borders during 2009-2018.





No trend available  
for breeding success

No trend available  
for clutch size

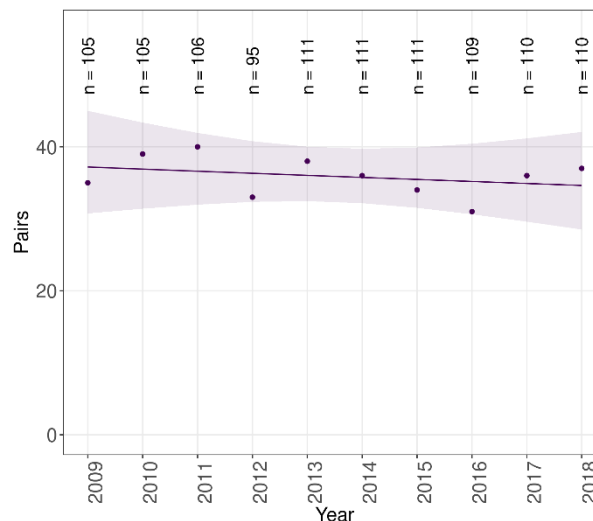
No trend available  
for brood size

No trend available  
for number of fledglings

**Figure 7:** Trends in breeding pairs, success, clutch size, brood size and the number of fledglings of Merlin Lothian & Borders during 2009-2018.

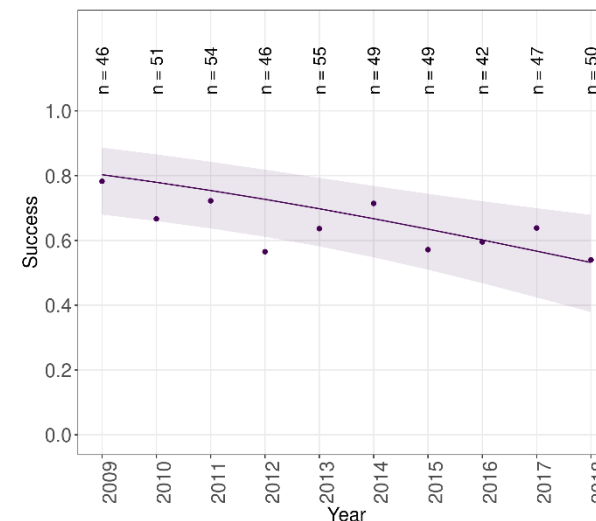


**Trend in Pairs of Peregrine in Lothian & Borders using SRMS data**



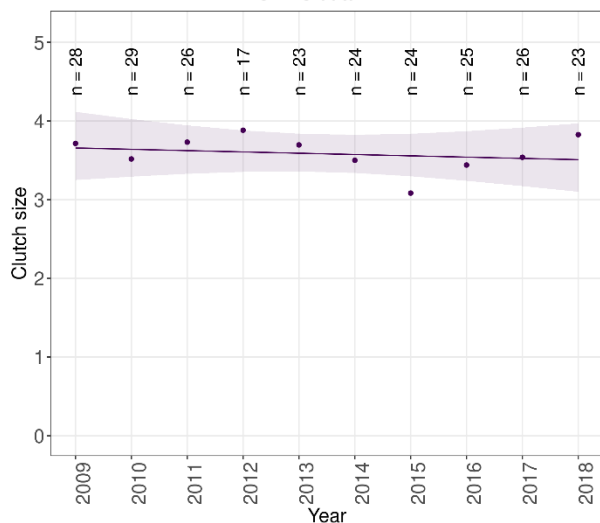
Lothian & Borders trend: Not significant

**Trend in Success of Peregrine in Lothian & Borders using SRMS data**



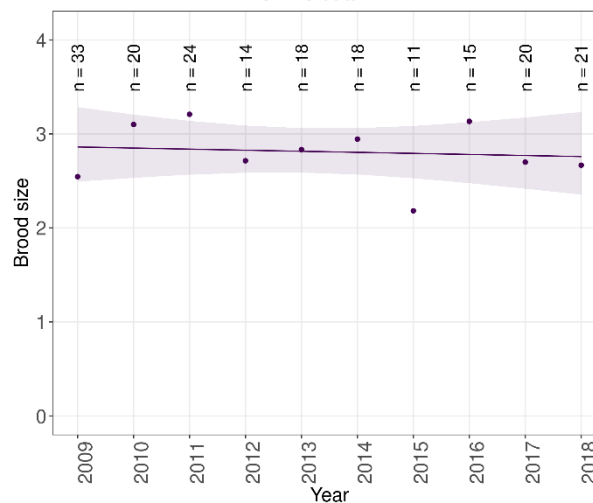
Lothian & Borders trend: Decrease

**Trend in Clutch size of Peregrine in Lothian & Borders using SRMS data**



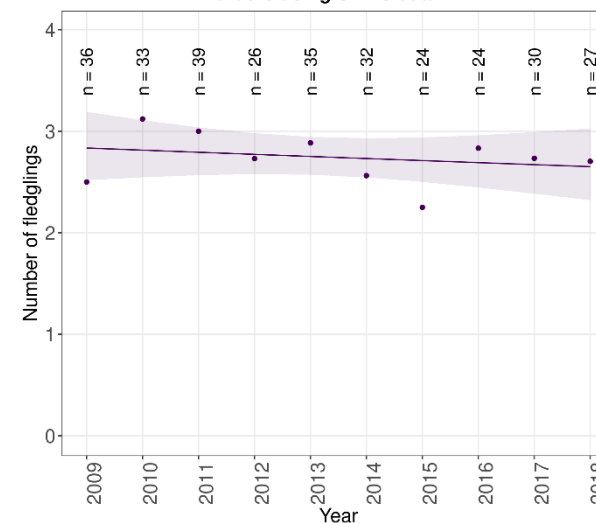
Lothian & Borders trend: Not significant

**Trend in Brood size of Peregrine in Lothian & Borders using SRMS data**



Lothian & Borders trend: Not significant (caveats: Sample sizes small)

**Trend in Number of fledglings of Peregrine in Lothian & Borders using SRMS data**

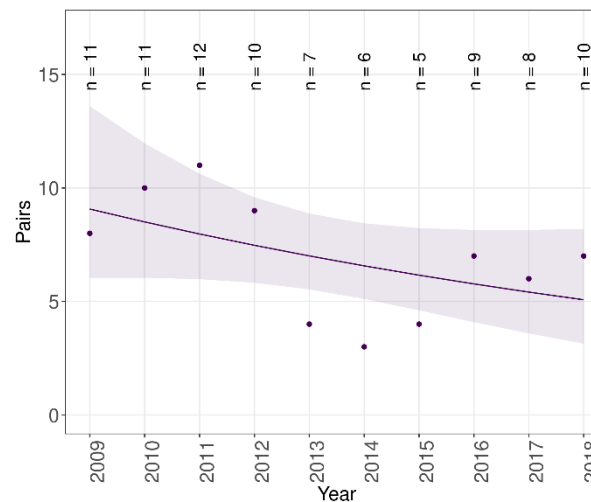


Lothian & Borders trend: Not significant

**Figure 8:** Trends in breeding pairs, success, clutch size, brood size and the number of fledglings of Peregrine in Lothian & Borders during 2009-2018.

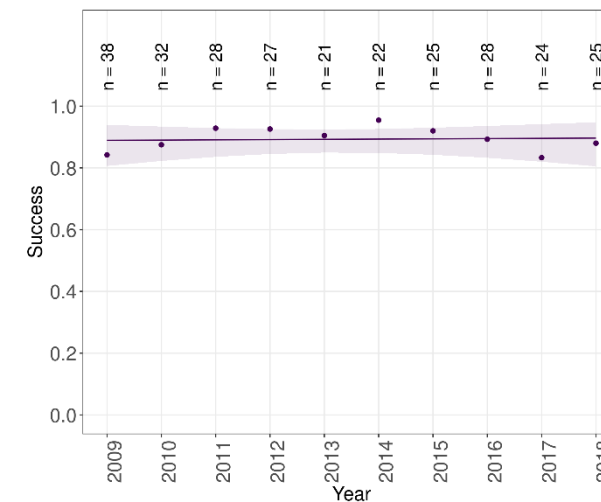


Trend in Pairs of Raven in Lothian & Borders using SRMS data



Lothian & Borders trend: Not significant (caveats: Sample sizes small)

Trend in Success of Raven in Lothian & Borders using SRMS data

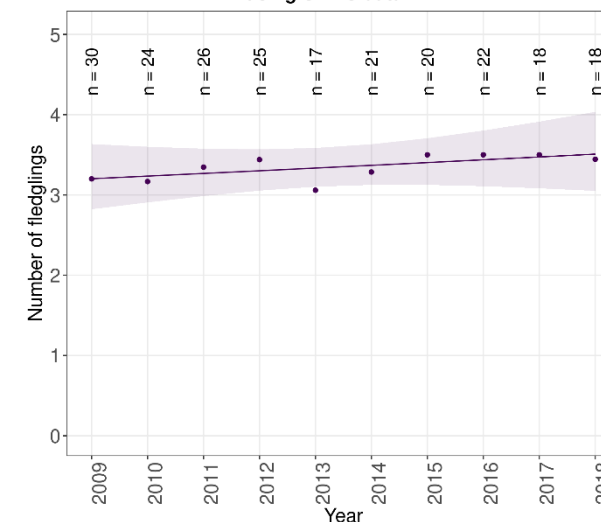


Lothian & Borders trend: Not significant (caveats: No home range random effect)

No trend available  
for clutch size

No trend available  
for brood size

Trend in Number of fledglings of Raven in Lothian & Borders using SRMS data



Lothian & Borders trend: Not significant

**Figure 9:** Trends in breeding pairs, success, clutch size, brood size and the number of fledglings of Raven in Lothian & Borders during 2009-2018.