

NHZ 03. Coll, Tiree and the Western Isles

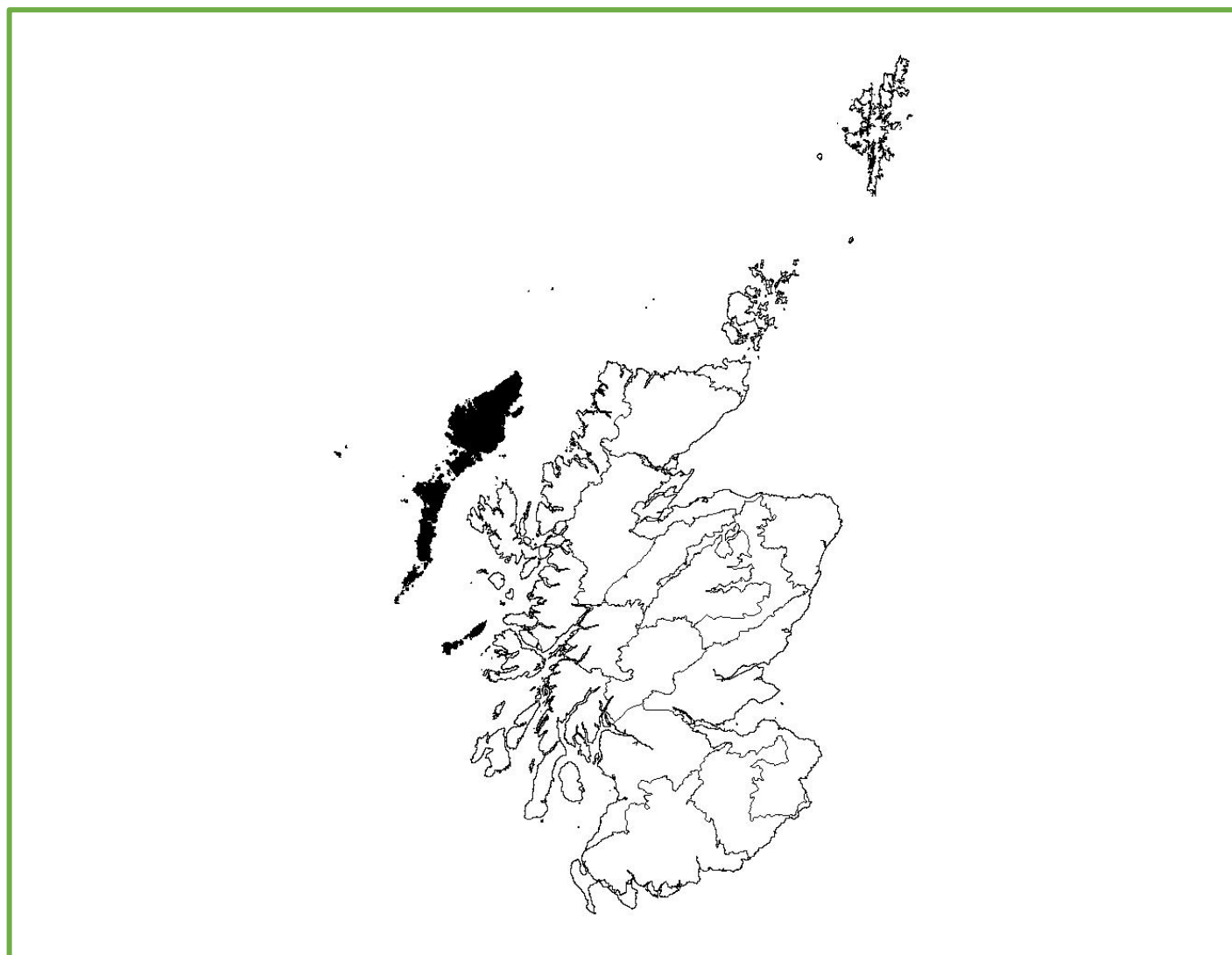


Figure 1: NHZ 03. Coll, Tiree and the Western Isles.

Trends in breeding numbers are available for three species and trends in breeding success for four of the nine species for which the SRMS holds records for NHZ 03. Coll, Tiree and the Western Isles (Table 1).

Golden Eagle

The number of breeding pairs and breeding success showed no significant change. No trends are available for clutch size or brood size but the number of fledglings showed no significant change (Figure 2).

White-tailed Eagle

The number of breeding pairs increased (+6.4%) while breeding success showed no significant change. Clutch size and the number of fledglings

showed no significant change. No trend was available for brood size (Figure 3).

Buzzard

No trend is available for the number of breeding pairs. Breeding success showed no significant change. No trends in clutch size or brood size were available but the number of fledglings showed no significant change (Figure 4).

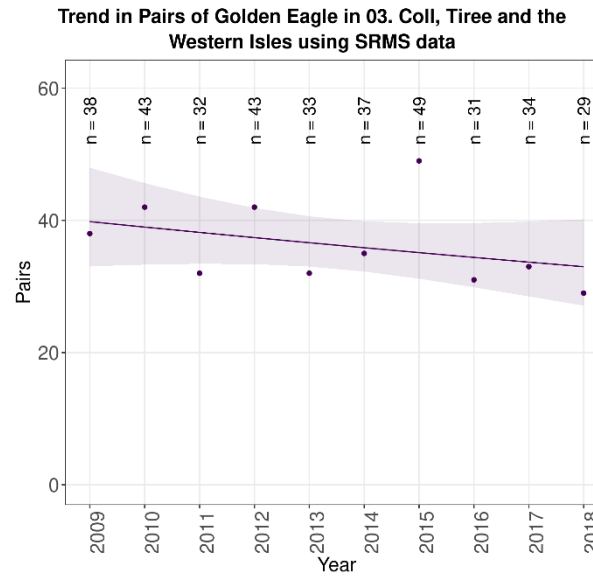
Raven

The number of breeding pairs and breeding success showed no significant change. No trends are available for clutch size or brood size but the number of fledglings showed no significant change (Figure 5).

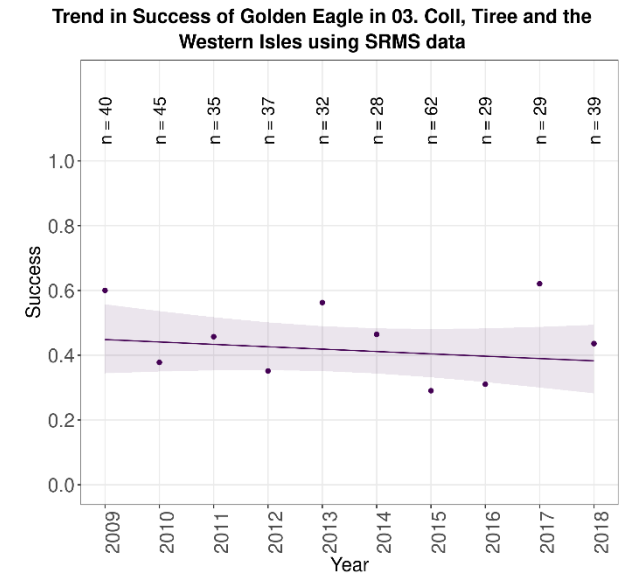
Table 1: Summary of SRMS trends for NHZ 03. Coll, Tiree and the Western Isles during 2009-2018. Figures in parentheses indicate the annual change, with significant increases highlighted in green and non-significant changes highlighted in grey. '—' indicates where the species occurs but no trend is available. 'Absent' indicates where the species is not known to breed.

Species:	Pairs	Success	Clutch size	Brood size	Number of fledglings
Osprey	Absent	Absent	Absent	Absent	Absent
Golden Eagle	Not significant	Not significant	—	—	Not significant ^{rs}
Sparrowhawk	—	—	—	—	—
Goshawk	Absent	Absent	Absent	Absent	Absent
Hen Harrier	—	—	—	—	—
Red Kite	Absent	Absent	Absent	Absent	Absent
White-tailed Eagle	Increase ^{ax} (6.4%)	Not significant ^x	Not significant ^{rsx}	—	Not significant ^{sx}
Buzzard	—	Not significant ^s	—	—	Not significant ^{rs}
Barn Owl	Absent	Absent	Absent	Absent	Absent
Tawny Owl	Absent	Absent	Absent	Absent	Absent
Kestrel	—	—	—	—	—
Merlin	—	—	—	—	—
Peregrine	—	—	—	—	—
Raven	Not significant ^v	Not significant	—	—	Not significant ^{rs}

^a All data used, ^r No home range random effect, ^s Sample sizes small, ^v Variable effort, ^x Expanding population.



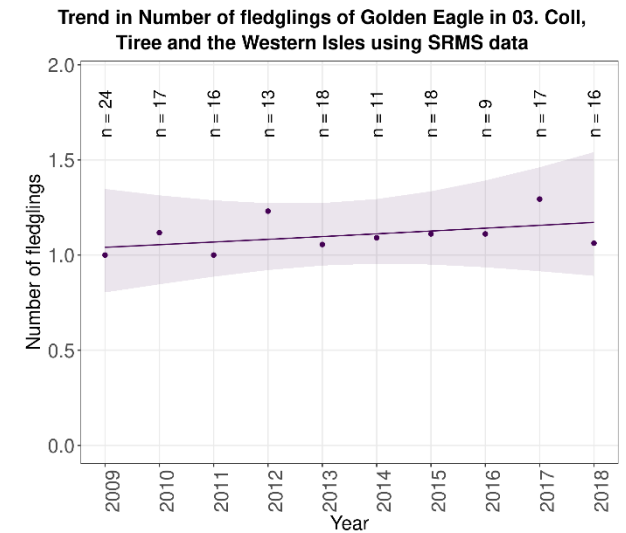
03. Coll, Tiree and the Western Isles trend: Not significant



03. Coll, Tiree and the Western Isles trend: Not significant

No trend available
for clutch size

No trend available
for brood size

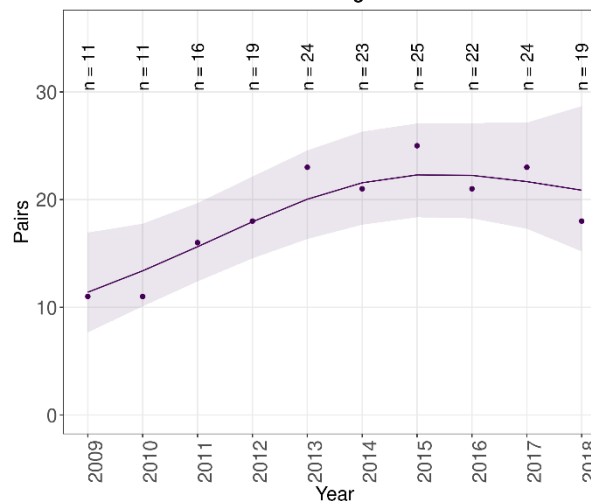


03. Coll, Tiree and the Western Isles trend: Not significant
(caveats: Sample sizes small; No home range random effect)

Figure 2: Trends in breeding pairs, success, clutch size, brood size and the number of fledglings of Golden Eagle in NHZ 03. Coll, Tiree and the Western Isles during 2009-2018.

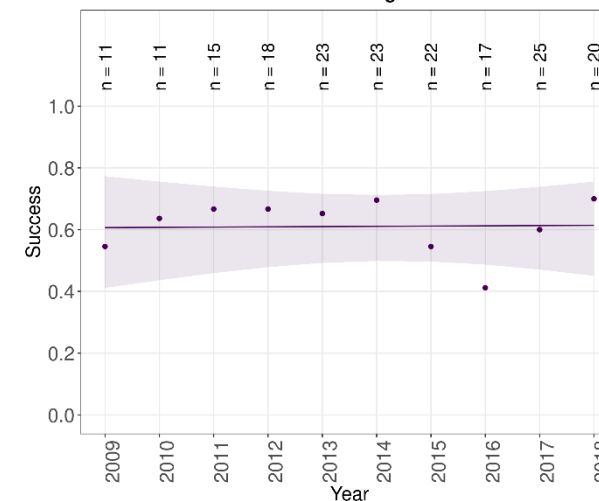


Trend in Pairs of White-tailed Eagle in 03. Coll, Tiree and the Western Isles using SRMS data



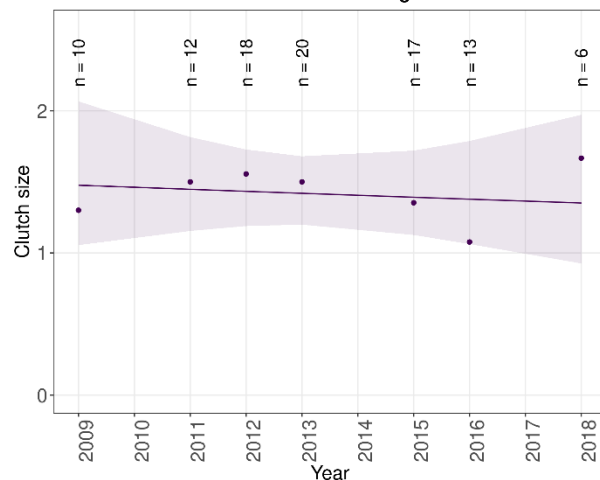
03. Coll, Tiree and the Western Isles trend: Increase
(caveats: Expanding population, All data used)

Trend in Success of White-tailed Eagle in 03. Coll, Tiree and the Western Isles using SRMS data



03. Coll, Tiree and the Western Isles trend: Not significant
(caveats: Expanding population)

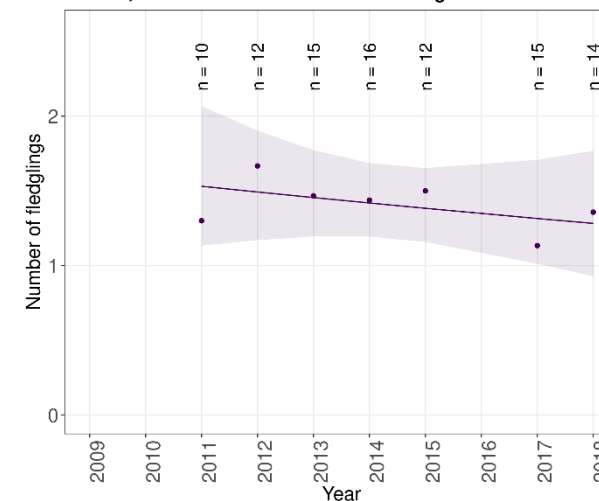
Trend in Clutch size of White-tailed Eagle in 03. Coll, Tiree and the Western Isles using SRMS data



03. Coll, Tiree and the Western Isles trend: Not significant
(caveats: Expanding population; Sample sizes small;
No home range random effect)

No trend available
for brood size

Trend in Number of fledglings of White-tailed Eagle in 03. Coll, Tiree and the Western Isles using SRMS data



03. Coll, Tiree and the Western Isles trend: Not significant
(caveats: Expanding population; Sample sizes small)

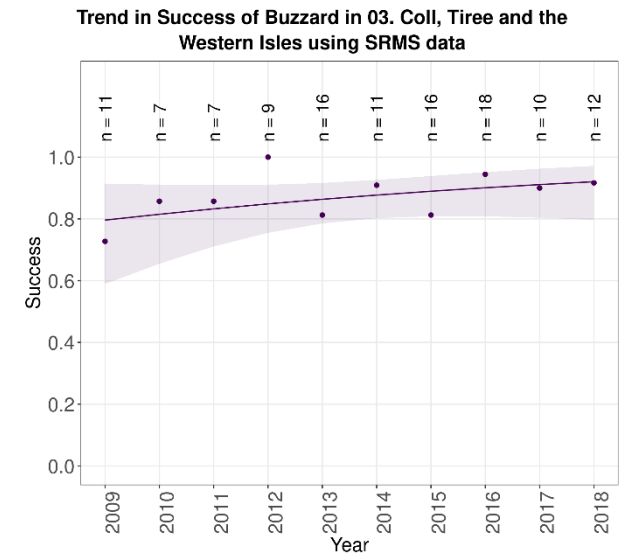
Figure 3: Trends in breeding pairs, success, clutch size, brood size and the number of fledglings of White-tailed Eagle in NHZ 03. Coll, Tiree and the Western Isles during 2009-2018.



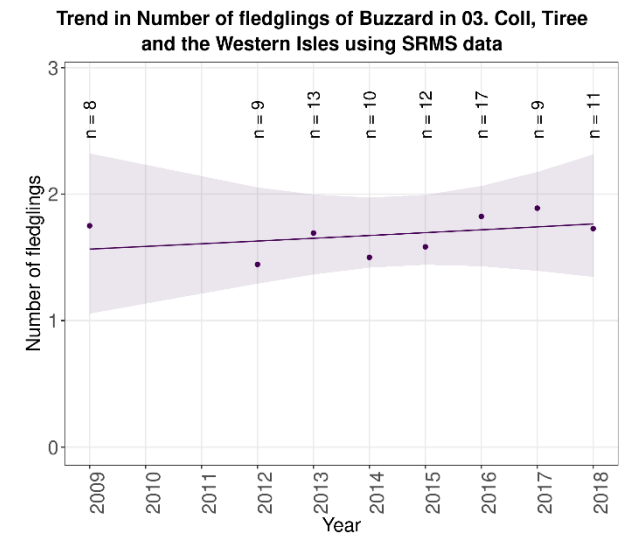
No trend available
for breeding pairs

No trend available
for clutch size

No trend available
for brood size

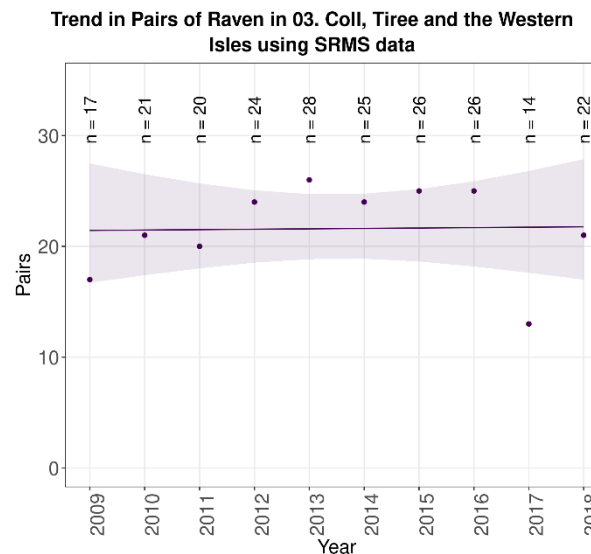


03. Coll, Tiree and the Western Isles trend: Not significant
(caveats: Sample sizes small)

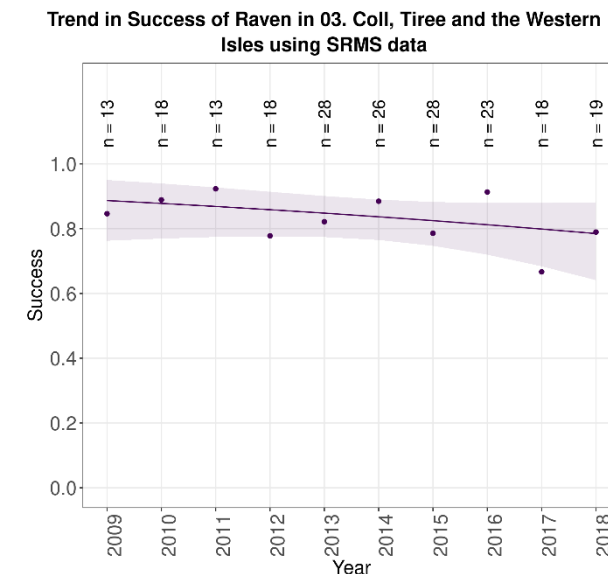


03. Coll, Tiree and the Western Isles trend: Not significant
(caveats: Sample sizes small; No home range random effect)

Figure 4: Trends in breeding pairs, success, clutch size, brood size and the number of fledglings of Buzzard in NHZ 03. Coll, Tiree and the Western Isles during 2009-2018.



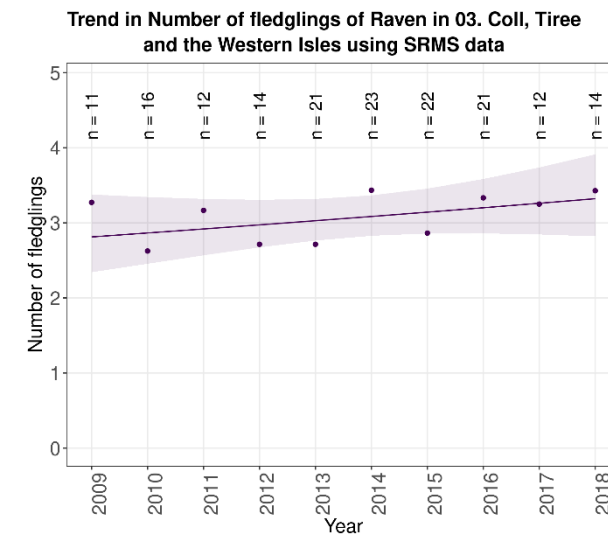
03. Coll, Tiree and the Western Isles trend: Not significant
(caveats: Variable effort)



03. Coll, Tiree and the Western Isles trend: Not significant

No trend available
for clutch size

No trend available
for brood size



03. Coll, Tiree and the Western Isles trend: Not significant
(caveats: Sample sizes small; No home range random effect)

Figure 5: Trends in breeding pairs, success, clutch size, brood size and the number of fledglings of Raven in NHZ 03. Coll, Tiree and the Western Isles during 2009-2018.