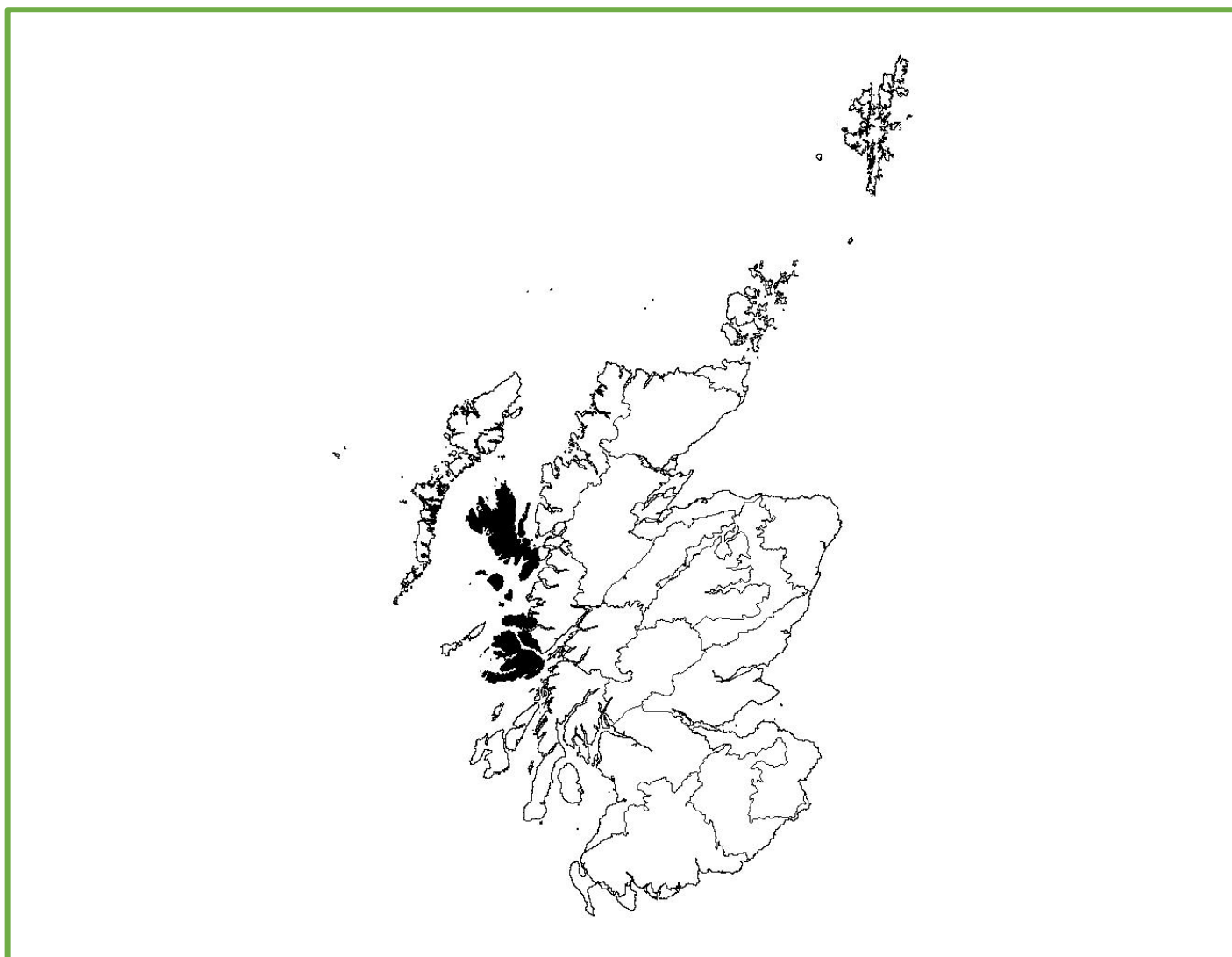


## NHZ 06. Western Seaboard



**Figure 1:** NHZ 06. Western Seaboard.

Trends in breeding numbers are available for one species and trends in breeding success for three of the 12 species for which the SRMS holds records for NHZ 06. Western Seaboard (Table 1).

### *Golden Eagle*

No trend is available for the number of breeding pairs. Breeding success showed no significant change. No trends are available for clutch size, brood size or number of fledglings (Figure 2).

### *Hen Harrier*

No trend is available for the number of breeding pairs. Breeding success showed no significant change. No trends are available for clutch size, brood size or number of fledglings (Figure 3).

### *White-tailed Eagle*

The number of breeding pairs increased significantly (+4.9%) while breeding success, clutch size, brood size and the number of fledglings showed no significant change (Figure 4).

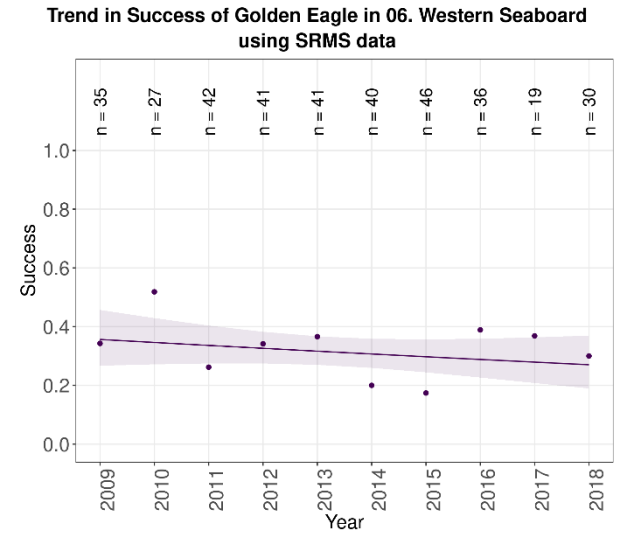
**Table 1:** Summary of SRMS trends for NHZ 06. Western Seaboard during 2009-2018. Figures in parentheses indicate the annual change, with significant increases highlighted in green and non-significant changes highlighted in grey. ‘—’ indicates where the species occurs but no trend is available. ‘No SRMS data’ indicates where the SRMS does not hold any records for the region of interest. ‘Absent’ indicates where the species is not known to breed.

<b>Species:</b>	<b>Pairs</b>	<b>Success</b>	<b>Clutch size</b>	<b>Brood size</b>	<b>Number of fledglings</b>
Osprey	Absent	Absent	Absent	Absent	Absent
Golden Eagle	—	Not significant <sup>rsv</sup>	—	—	—
Sparrowhawk	—	—	—	—	—
Goshawk	Absent	Absent	Absent	Absent	Absent
Hen Harrier	—	Not significant <sup>s</sup>	—	—	—
Red Kite	Absent	Absent	Absent	Absent	Absent
White-tailed Eagle	Increase <sup>ax</sup> (4.9%)	Not significant <sup>x</sup>	Not significant <sup>rsx</sup>	Not significant <sup>rsx</sup>	Not significant <sup>sx</sup>
Buzzard	—	—	—	—	—
Barn Owl	—	—	—	—	—
Tawny Owl	—	—	—	—	—
Kestrel	—	—	—	—	—
Merlin	—	—	—	—	—
Peregrine	—	—	—	—	—
Raven	—	—	—	—	—

<sup>a</sup> All data used, <sup>r</sup> No home range random effect, <sup>s</sup> Sample sizes small, <sup>v</sup> Variable effort, <sup>x</sup> Expanding population.



No trend available  
for breeding pairs



06. Western Seaboard trend: Not significant (caveats: Sample sizes small; Variable effort; No home range random effect)

No trend available  
for clutch size

No trend available  
for brood size

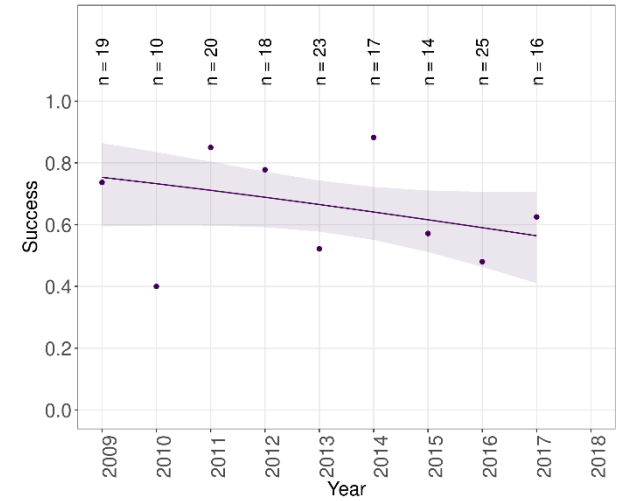
No trend available  
for number of fledglings

**Figure 2:** Trends in breeding pairs, success, clutch size, brood size and the number of fledglings of Golden Eagle in NHZ 06. Western Seaboard during 2009-2018.



No trend available  
for breeding pairs

Trend in Success of Hen Harrier in 06. Western Seaboard  
using SRMS data



06. Western Seaboard trend: Not significant (caveats: Sample sizes small; )

No trend available  
for clutch size

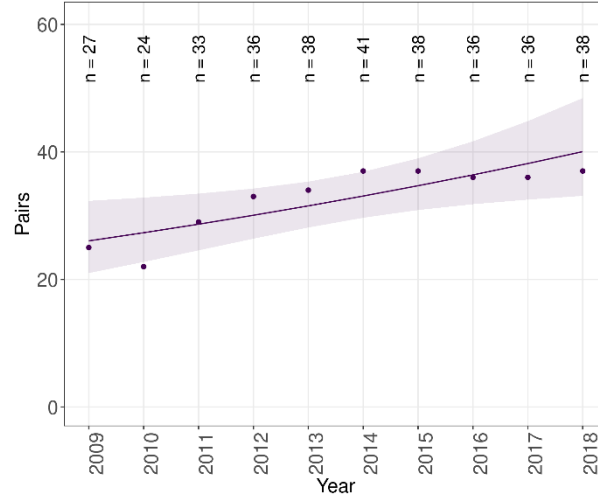
No trend available  
for brood size

No trend available  
for number of fledglings

**Figure 3:** Trends in breeding pairs, success, clutch size, brood size and the number of fledglings of Hen Harrier in NHZ 06. Western Seaboard during 2009-2018.

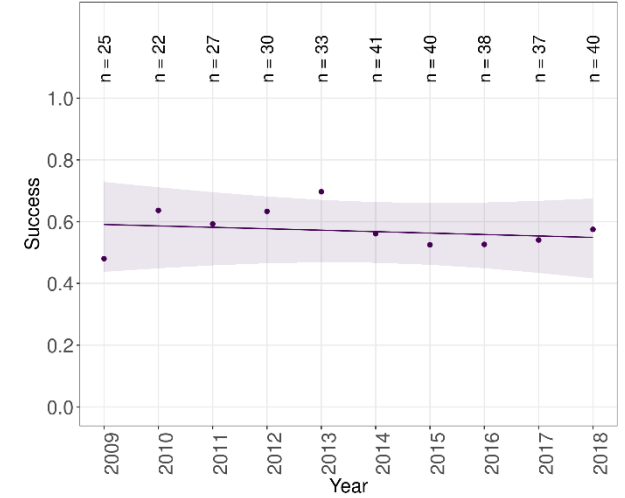


Trend in Pairs of White-tailed Eagle in 06. Western Seaboard using SRMS data



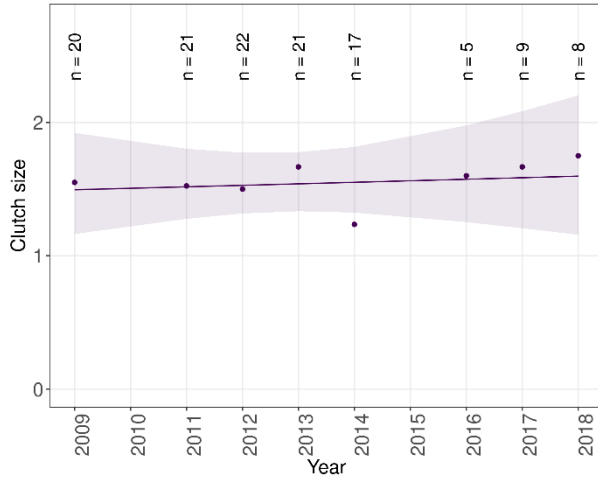
06. Western Seaboard trend: Increase (caveats: Expanding population, All data used)

Trend in Success of White-tailed Eagle in 06. Western Seaboard using SRMS data



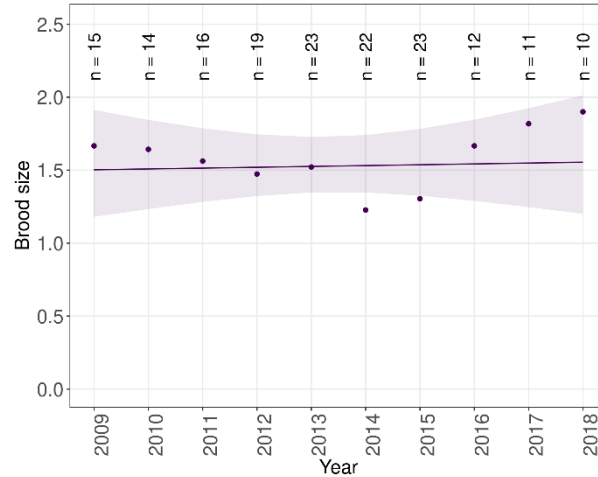
06. Western Seaboard trend: Not significant (caveats: Expanding population)

Trend in Clutch size of White-tailed Eagle in 06. Western Seaboard using SRMS data



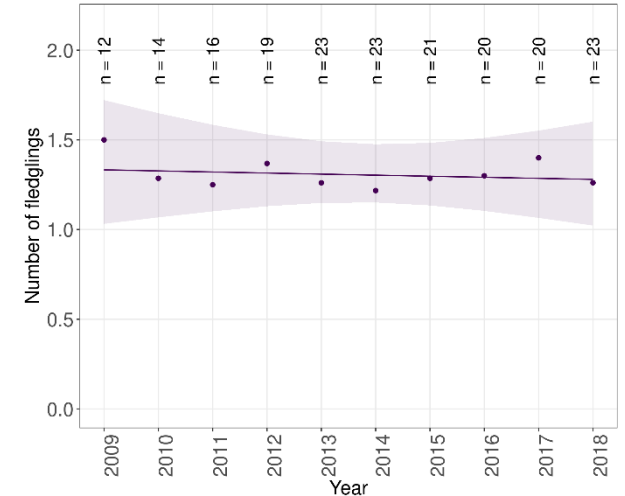
06. Western Seaboard trend: Not significant (caveats: Expanding population; Sample sizes small; No home range random effect)

Trend in Brood size of White-tailed Eagle in 06. Western Seaboard using SRMS data



06. Western Seaboard trend: Not significant (caveats: Expanding population; Sample sizes small; No home range random effect)

Trend in Number of fledglings of White-tailed Eagle in 06. Western Seaboard using SRMS data



06. Western Seaboard trend: Not significant (caveats: Expanding population; Sample sizes small)

**Figure 4:** Trends in breeding pairs, success, clutch size, brood size and the number of fledglings of White-tailed Eagle in NHZ 06. Western Seaboard during 2009-2018.