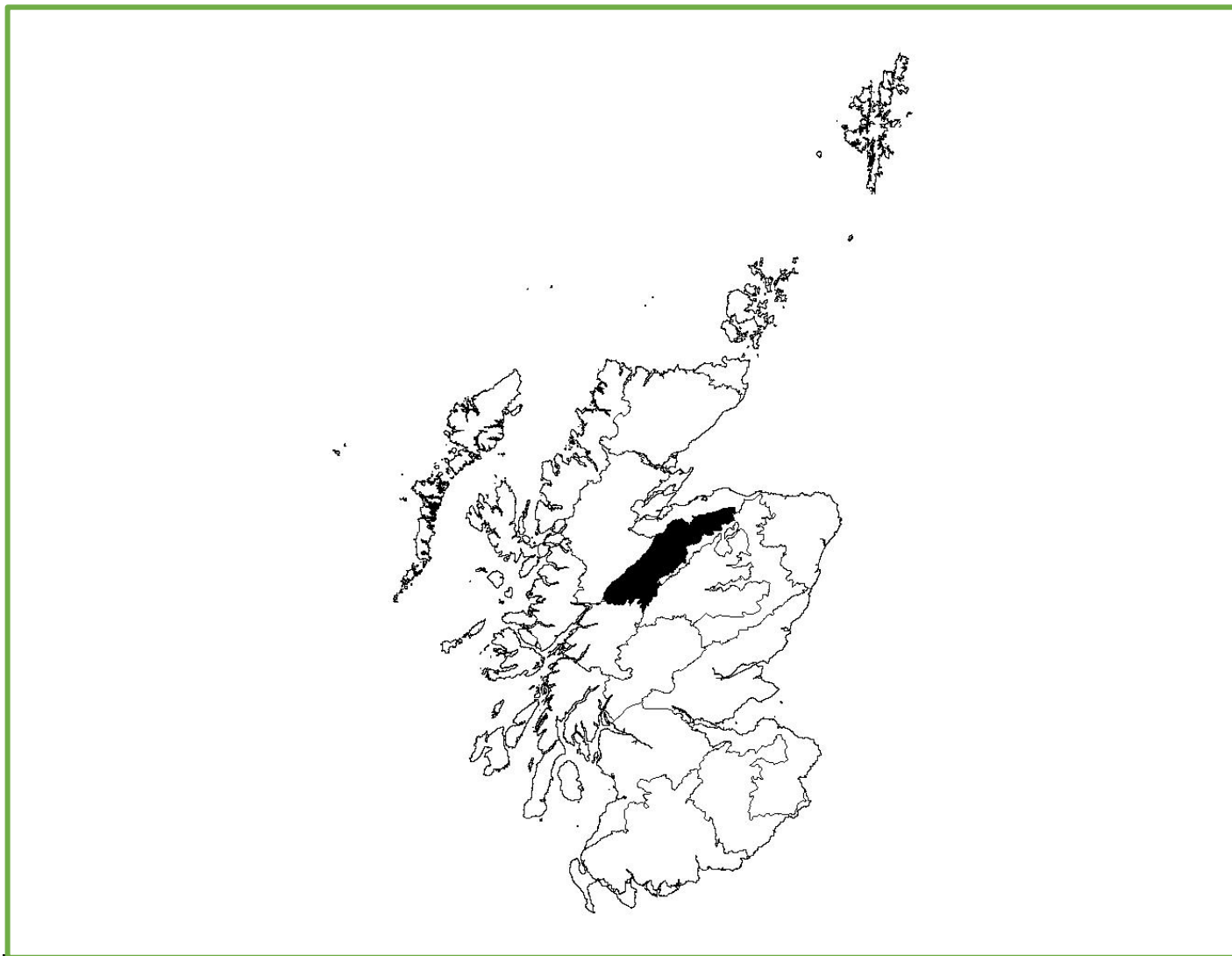


## NHZ 10. Central Highlands



**Figure 1:** NHZ 10. Central Highlands.

Trends in breeding numbers are available for two species and trends in breeding success for one of the 14 species for which the SRMS holds records for NHZ 10. Central Highlands (Table 1).

### *Golden Eagle*

No trend is available for the number of breeding pairs. Breeding success showed no significant change. No trends are available for clutch size, brood size or the number of fledglings (Figure 2).

### *Hen Harrier*

The number of breeding pairs showed no significant change. No trends are available for breeding success, clutch size, brood size or the number of fledglings (Figure 3).

### *Merlin*

The number of breeding pairs showed no significant change. No trends are available for breeding success, clutch size, brood size or the number of fledglings (Figure 4).

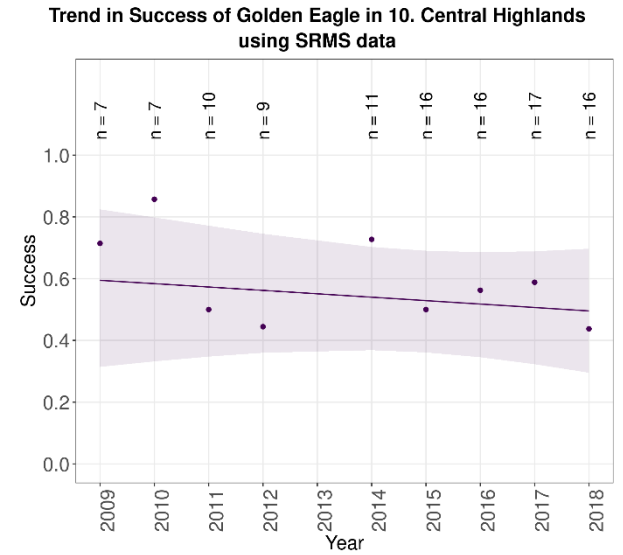
**Table 1:** Summary of SRMS trends for NHZ 10. Central Highlands during 2009-2018. Non-significant changes are highlighted in grey ‘—’ indicates where the species occurs but no trend is available.

<b>Species:</b>	<b>Pairs</b>	<b>Success</b>	<b>Clutch size</b>	<b>Brood size</b>	<b>Number of fledglings</b>
Osprey	—	—	—	—	—
Golden Eagle	—	Not significant <sup>sv</sup>	—	—	—
Sparrowhawk	—	—	—	—	—
Goshawk	—	—	—	—	—
Hen Harrier	Not significant <sup>sv</sup>	—	—	—	—
Red Kite	—	—	—	—	—
White-tailed Eagle	—	—	—	—	—
Buzzard	—	—	—	—	—
Barn Owl	—	—	—	—	—
Tawny Owl	—	—	—	—	—
Kestrel	—	—	—	—	—
Merlin	Not significant <sup>s</sup>	—	—	—	—
Peregrine	—	—	—	—	—
Raven	—	—	—	—	—

<sup>s</sup> Sample sizes small, <sup>v</sup> Variable effort.



No trend available  
for breeding pairs



10. Central Highlands trend: Not significant (caveats: Sample sizes small; Variable effort)

No trend available  
for clutch size

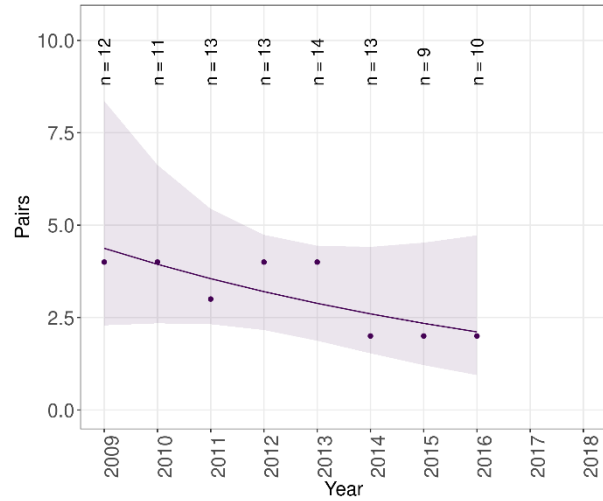
No trend available  
for brood size

No trend available  
for number of fledglings

**Figure 2:** Trends in breeding pairs, success, clutch size, brood size and the number of fledglings of Golden Eagle in NHZ 10. Central Highlands during 2009-2018.



Trend in Pairs of Hen Harrier in 10. Central Highlands using SRMS data



10. Central Highlands trend: Not significant (caveats: Sample sizes small; Variable effort)

No trend available for breeding success

No trend available for clutch size

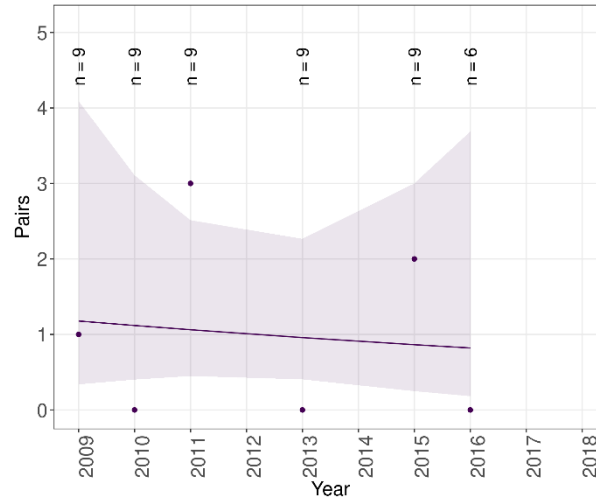
No trend available for brood size

No trend available for number of fledglings

**Figure 3:** Trends in breeding pairs, success, clutch size, brood size and the number of fledglings of Hen Harrier in NHZ 10. Central Highlands during 2009-2018.



Trend in Pairs of Merlin in 10. Central Highlands using SRMS data



10. Central Highlands trend: Not significant (caveats: Sample sizes small)

No trend available for breeding success

No trend available for clutch size

No trend available for brood size

No trend available for number of fledglings

**Figure 4:** Trends in breeding pairs, success, clutch size, brood size and the number of fledglings of Merlin in NHZ 10. Central Highlands during 2009-2018.