

NHZ 18. Wigtown Machairs and Outer Solway Coast

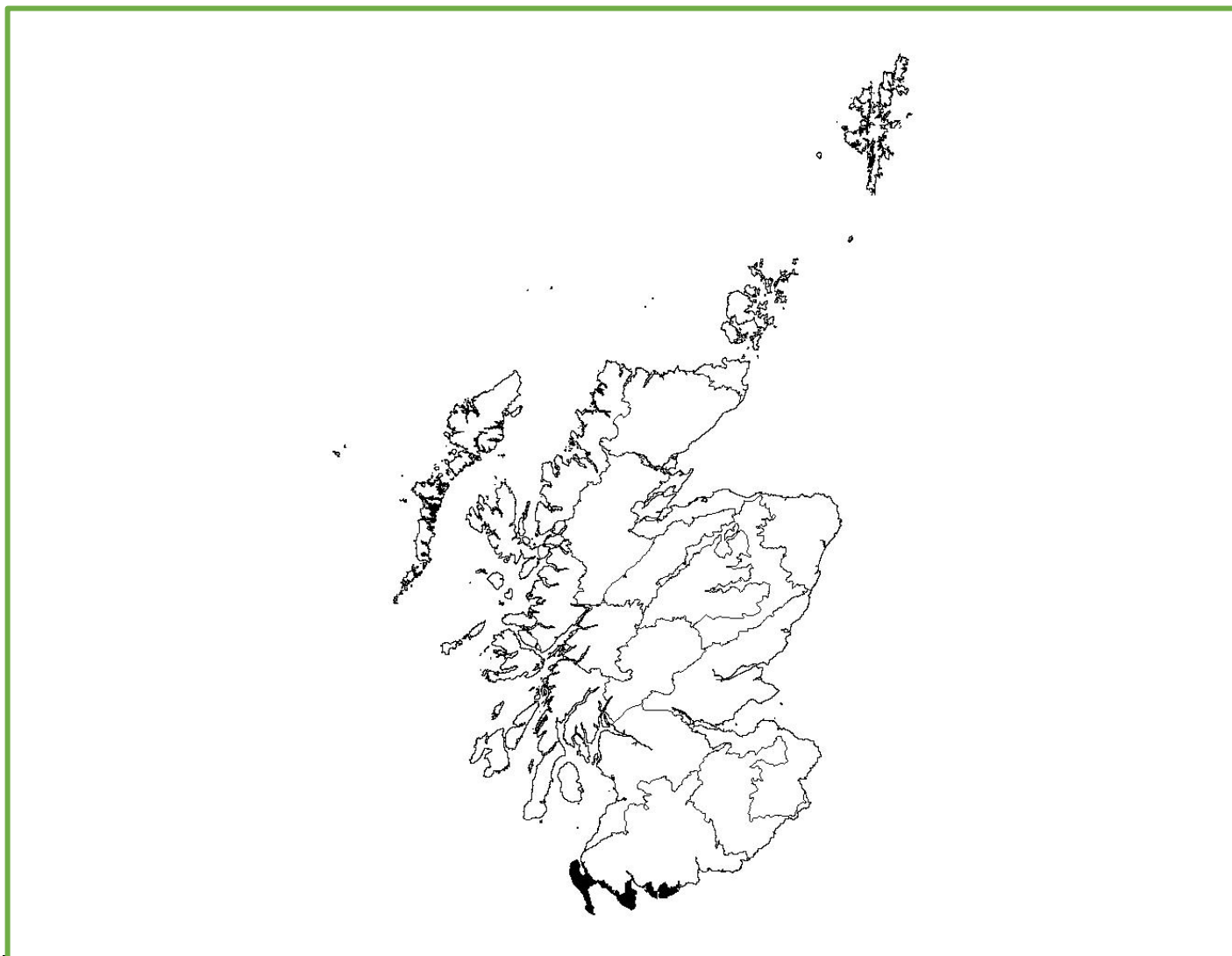


Figure 1: NHZ 18. Wigtown Machairs and Outer Solway Coast.

Trends in breeding numbers are available for two species and trends in breeding success for two of the 11 species for which the SRMS holds records for NHZ 18. Wigtown Machairs and Outer Solway Coast (Table 1).

Barn Owl

The number of breeding pairs decreased significantly (-5.9%) while breeding success showed non-linear variation. Clutch size, brood size and the number of fledglings all showed no significant change (Figure 2).

Peregrine

The number of breeding pairs and breeding success showed no significant change. Trends are not available for clutch size or brood size but the

number of fledglings showed no significant change (Figure 3).

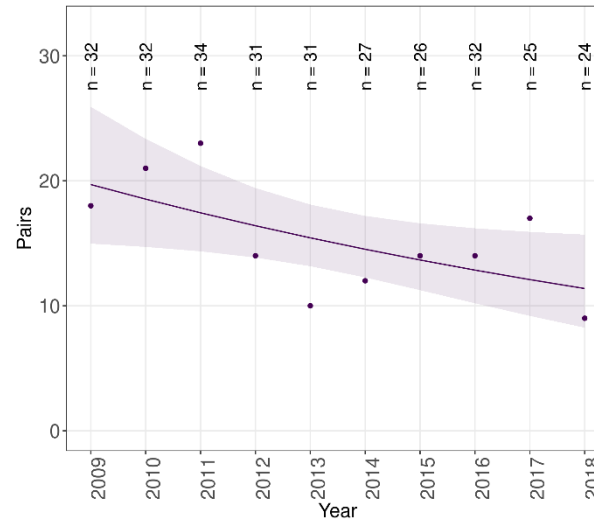
Table 1: Summary of SRMS trends for NHZ 18. Wigtown Machairs and Outer Solway Coast during 2009-2018. Figures in parentheses indicate the annual change, with significant decreases highlighted in blue and non-significant changes highlighted in grey. ‘—’ indicates where the species occurs but no trend is available. ‘No SRMS data’ indicates where the SRMS does not hold any records for the region of interest. ‘Absent’ indicates where the species is not known to breed.

Species:	Pairs	Success	Clutch size	Brood size	Number of fledglings
Osprey	—	—	—	—	—
Golden Eagle	Absent	Absent	Absent	Absent	Absent
Sparrowhawk	—	—	—	—	—
Goshawk	Absent	Absent	Absent	Absent	Absent
Hen Harrier	—	—	—	—	—
Red Kite	—	—	—	—	—
White-tailed Eagle	Absent	Absent	Absent	Absent	Absent
Buzzard	—	—	—	—	—
Barn Owl	Decrease (-5.9%)	Non-linear	Not significant ^{nr}	Not significant ^{nr}	Not significant ^{nr}
Tawny Owl	—	—	—	—	—
Kestrel	—	—	—	—	—
Merlin	Absent	Absent	Absent	Absent	Absent
Peregrine	Not significant	Not significant ^s	—	—	Not significant
Raven	—	—	—	—	—

ⁿ Nestbox based, ^r No home range random effect, ^s Sample sizes small.

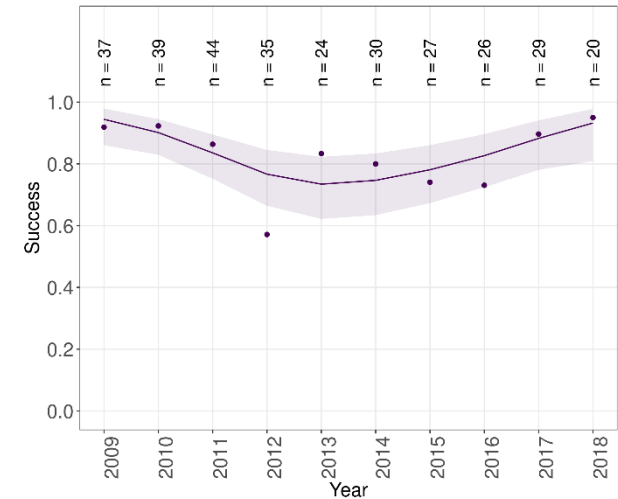


Trend in Pairs of Barn Owl in 18. Wigtown Machairs and Outer Solway Coast using SRMS data



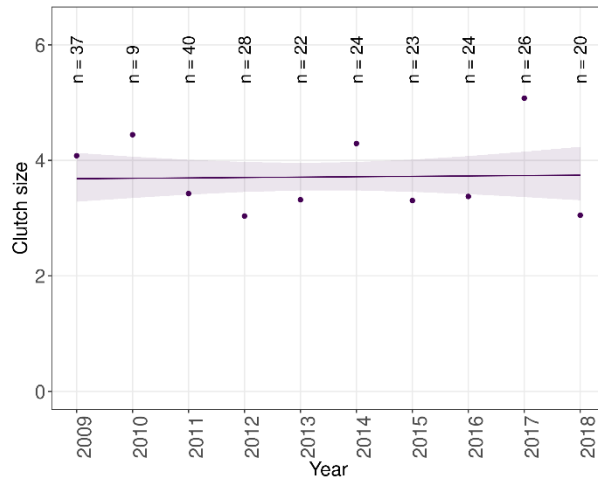
18. Wigtown Machairs and Outer Solway Coast trend: Decrease

Trend in Success of Barn Owl in 18. Wigtown Machairs and Outer Solway Coast using SRMS data



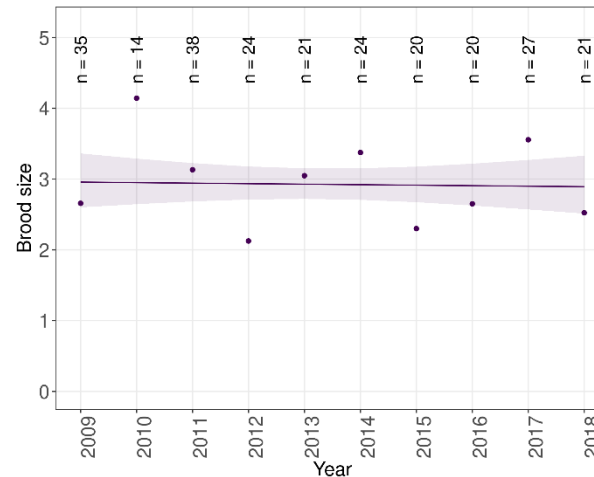
18. Wigtown Machairs and Outer Solway Coast trend: Non-linear (caveats: Nestbox based;)

Trend in Clutch size of Barn Owl in 18. Wigtown Machairs and Outer Solway Coast using SRMS data



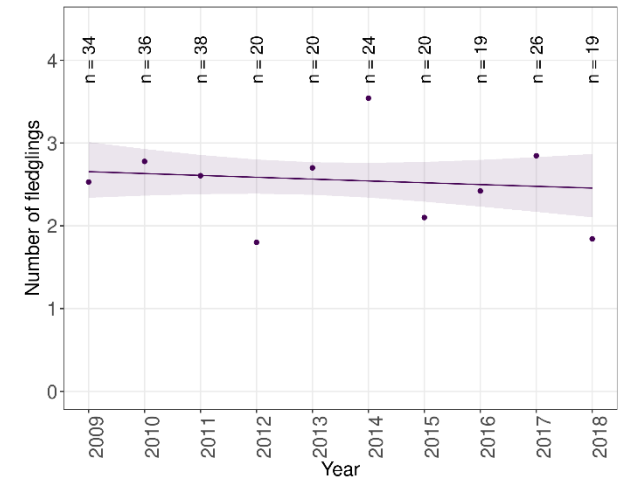
18. Wigtown Machairs and Outer Solway Coast trend: Not significant (caveats: Nestbox based; No home range random effect;)

Trend in Brood size of Barn Owl in 18. Wigtown Machairs and Outer Solway Coast using SRMS data



18. Wigtown Machairs and Outer Solway Coast trend: Not significant (caveats: Nestbox based; No home range random effect;)

Trend in Number of fledglings of Barn Owl in 18. Wigtown Machairs and Outer Solway Coast using SRMS data

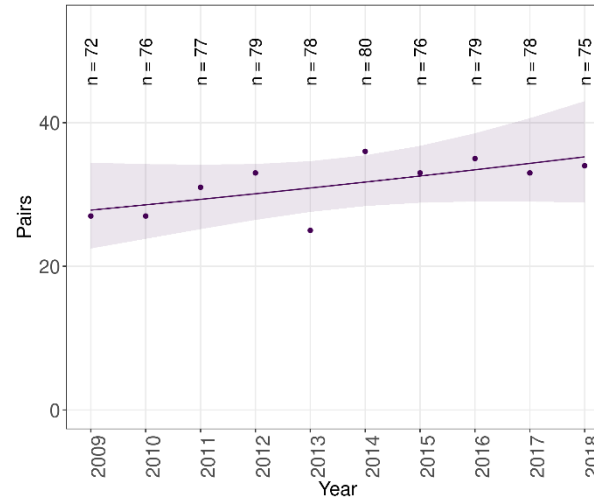


18. Wigtown Machairs and Outer Solway Coast trend: Not significant (caveats: Nestbox based; No home range random effect;)

Figure 2: Trends in breeding pairs, success, clutch size, brood size and the number of fledglings of Barn Owl in NHZ 18. Wigtown Machairs and Outer Solway Coast during 2009-2018.



Trend in Pairs of Peregrine in 19. Western Southern Uplands and Inner Solway using SRMS data

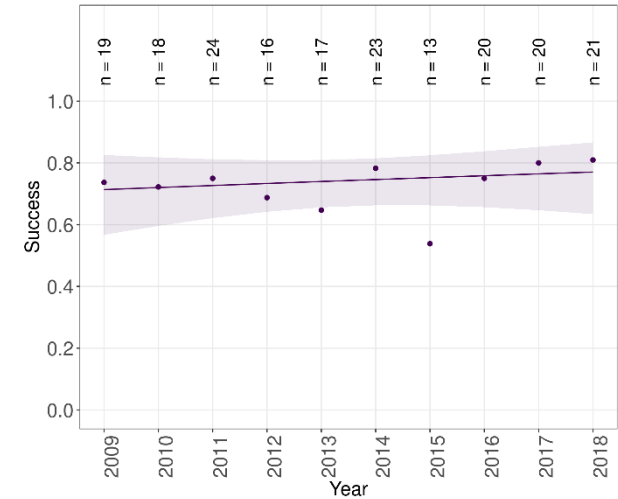


19. Western Southern Uplands and Inner Solway trend: Not significant

No trend available for clutch size

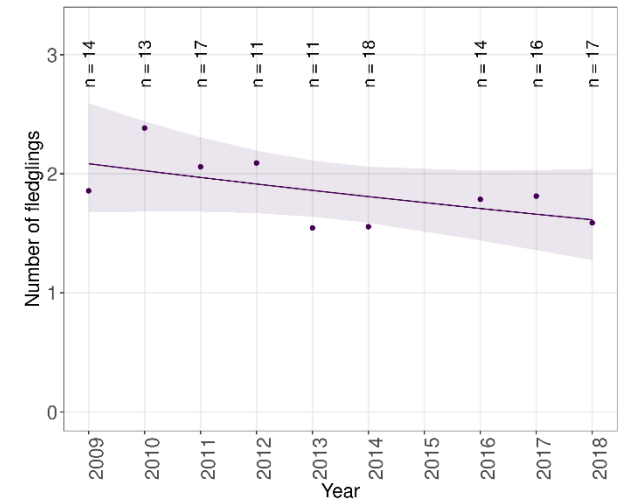
No trend available for brood size

Trend in Success of Peregrine in 18. Wigtown Machairs and Outer Solway Coast using SRMS data



18. Wigtown Machairs and Outer Solway Coast trend: Not significant (caveats: Sample sizes small)

Trend in Number of fledglings of Peregrine in 18. Wigtown Machairs and Outer Solway Coast using SRMS data



18. Wigtown Machairs and Outer Solway Coast trend: Not significant

Figure 3: Trends in breeding pairs, success, clutch size, brood size and the number of fledglings of Peregrine in NHZ 18. Wigtown Machairs and Outer Solway Coast during 2009-2018.