

South Strathclyde



Figure 1: South Strathclyde.

Trends in breeding numbers are available for four species and trends in breeding success for three of the 13 species for which the SRMS holds records for South Strathclyde (Table 1).

Hen Harrier

The number of breeding pairs decreased significantly (-27%). No trends are available for breeding success, clutch size, brood size or the number of fledglings (Figure 2).

Barn Owl

The number of breeding pairs and breeding success showed no significant change. No trends were available for clutch size and brood size but number of fledglings showed no significant change (Figure 3).

Kestrel

No trend is available for the number of breeding pairs. Breeding success, showed no significant change. No trends are available for clutch size, brood size or number of fledglings (Figure 4).

Peregrine

The number of breeding pairs showed no significant change while breeding success showed non-linear variation. No trends are available for clutch size and brood size but number of fledglings showed no significant change (Figure 5).

Raven

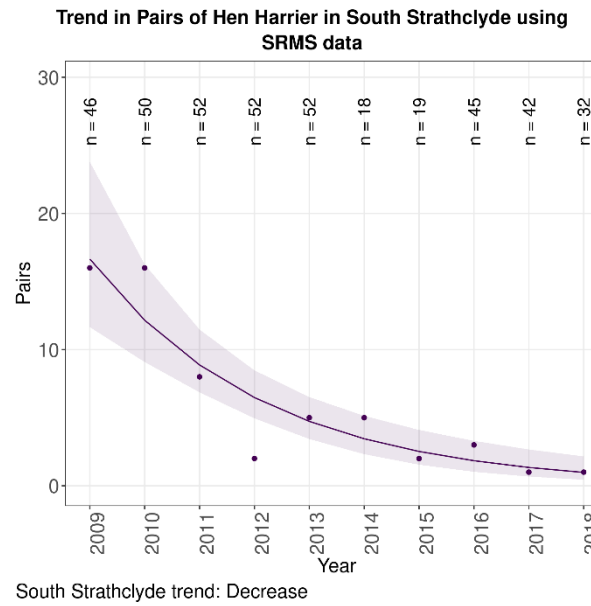
The number of breeding pairs showed no significant change while breeding success decreased significantly (-1%). No trends were available for

clutch size and brood size but number of fledglings showed no significant change (Figure 6).

Table 1: Summary of SRMS trends for South Strathclyde during 2009-2018. Figures in parentheses indicate the annual change, with significant decreases highlighted in blue and non-significant changes highlighted in grey. '—' indicates where the species occurs but no trend is available. 'Absent' indicates where the species is not known to breed.

Species:	Pairs	Success	Clutch size	Brood size	Number of fledglings
Osprey	—	—	—	—	—
Golden Eagle	—	—	—	—	—
Sparrowhawk	—	—	—	—	—
Goshawk	—	—	—	—	—
Hen Harrier	Decrease (-27%)	—	—	—	—
Red Kite	—	—	—	—	—
White-tailed Eagle	Absent	Absent	Absent	Absent	Absent
Buzzard	—	—	—	—	—
Barn Owl	Not significant ^{ns}	Not significant ^{nrs}	—	—	Not significant ^s
Tawny Owl	—	—	—	—	—
Kestrel	—	Not significant ^{ns}	—	—	—
Merlin	—	—	—	—	—
Peregrine	Not significant	Non-linear	—	—	Not significant
Raven	Not significant	Decrease ^r (-1%)	—	—	Not significant

ⁿ Nestbox based, ^r No home range random effect, ^s Sample sizes small.



No trend available
for breeding success

No trend available
for clutch size

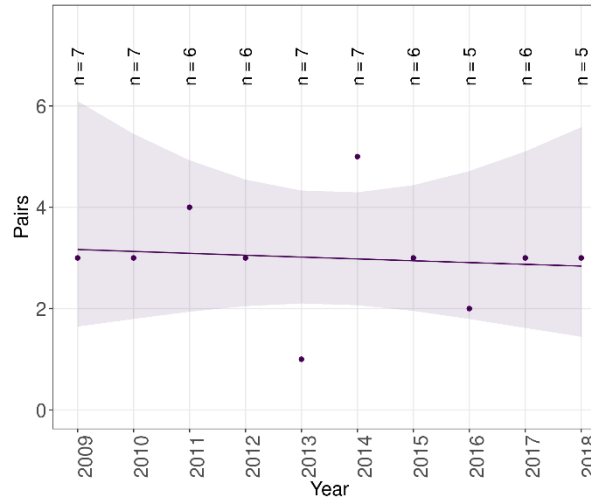
No trend available
for brood size

No trend available
for number of fledglings

Figure 2: Trends in breeding pairs, success, clutch size, brood size and the number of fledglings of Hen Harrier in South Strathclyde during 2009-2018.

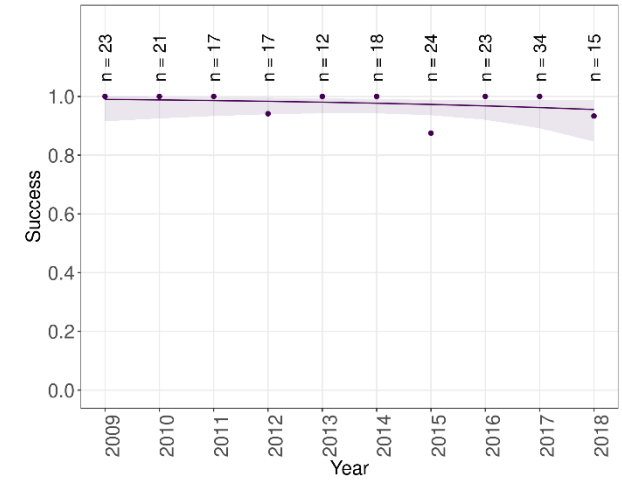


Trend in Pairs of Barn Owl in South Strathclyde using SRMS data



South Strathclyde trend: Not significant (caveats: Sample sizes small, Nestbox based)

Trend in Success of Barn Owl in South Strathclyde using SRMS data

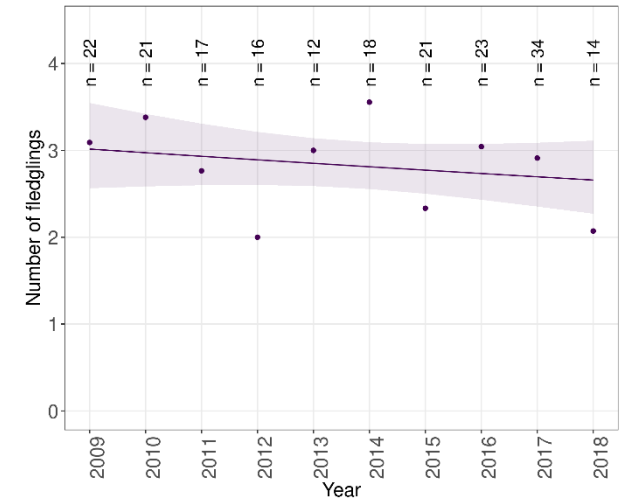


South Strathclyde trend: Stable (<5% change) (caveats: Sample sizes small, No home range random effect; Nestbox based)

No trend available
for clutch size

No trend available
for brood size

Trend in Number of fledglings of Barn Owl in South Strathclyde using SRMS data



South Strathclyde trend: Not significant (caveats: Sample sizes small)

Figure 3: Trends in breeding pairs, success, clutch size, brood size and the number of fledglings of Barn Owl in South Strathclyde during 2009-2018.



No trend available
for breeding pairs

No trend available
for clutch size

No trend available
for brood size

No trend available
for number of fledglings

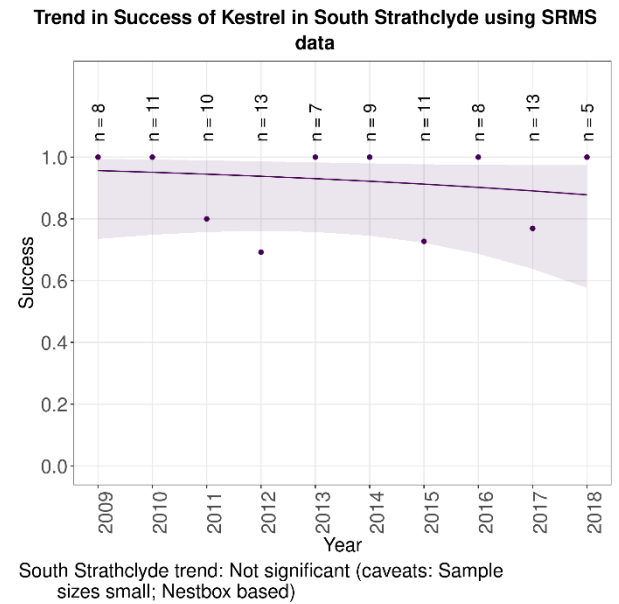
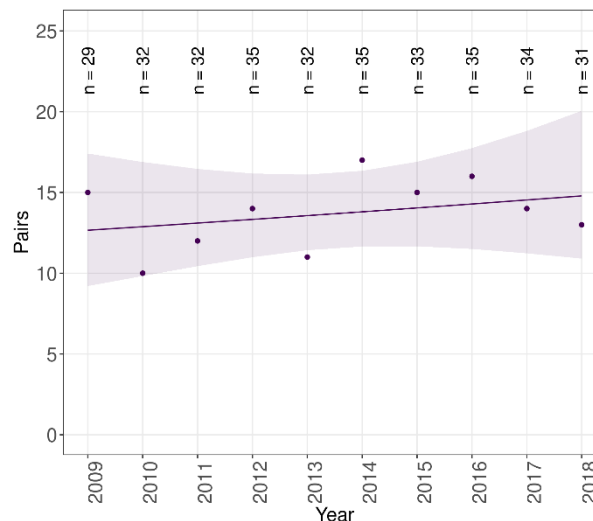


Figure 4: Trends in breeding pairs, success, clutch size, brood size and the number of fledglings of Kestrel in South Strathclyde during 2009-2018.

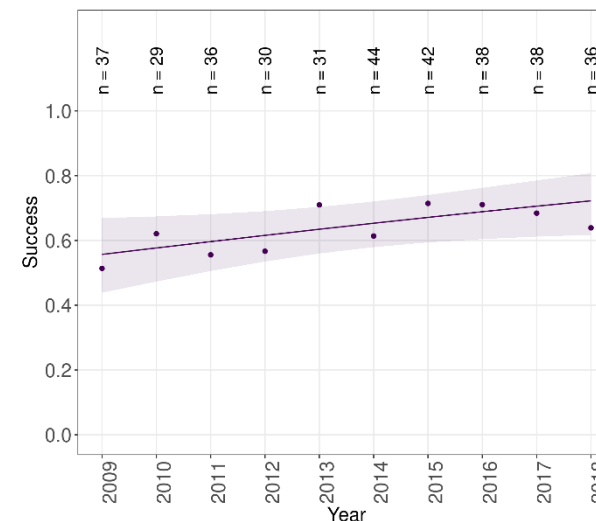


Trend in Pairs of Peregrine in South Strathclyde using SRMS data



South Strathclyde trend: Not significant

Trend in Success of Peregrine in South Strathclyde using SRMS data

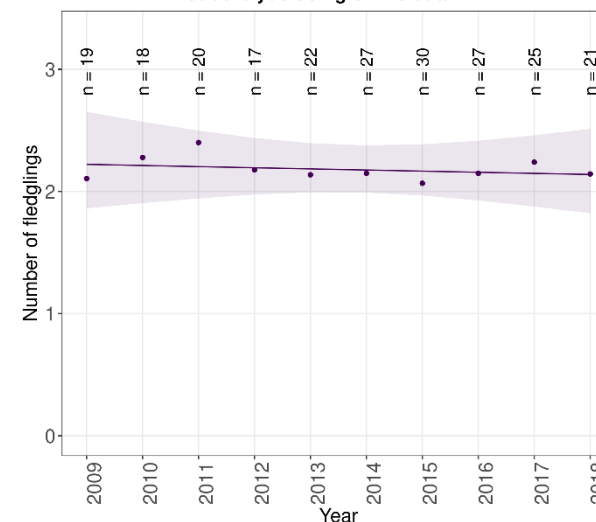


South Strathclyde trend: Non-linear

No trend available
for clutch size

No trend available
for brood size

Trend in Number of fledglings of Peregrine in South Strathclyde using SRMS data

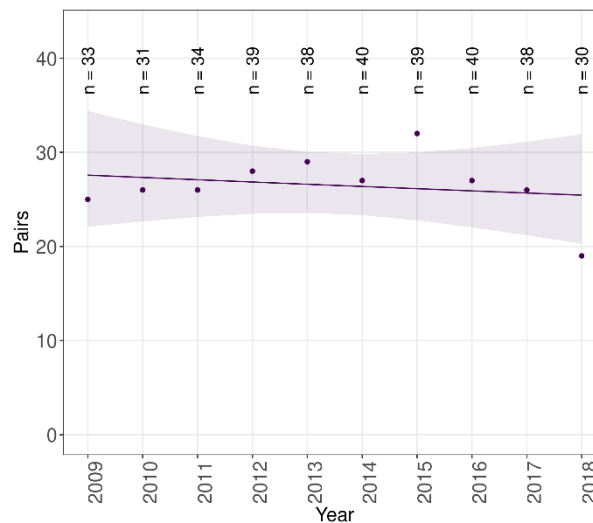


South Strathclyde trend: Not significant

Figure 5: Trends in breeding pairs, success, clutch size, brood size and the number of fledglings of Peregrine in South Strathclyde during 2009-2018.

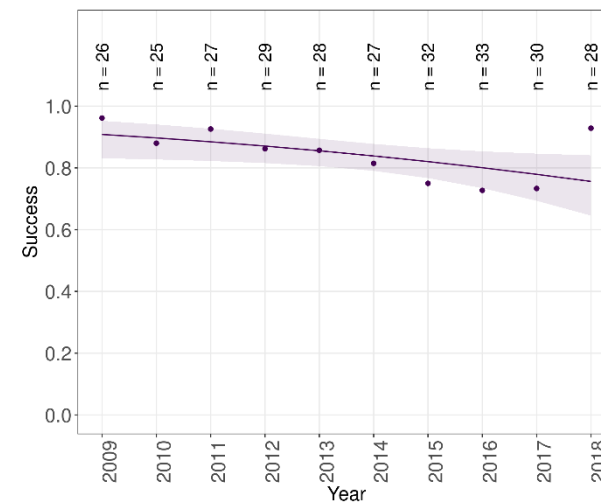


Trend in Pairs of Raven in South Strathclyde using SRMS data



South Strathclyde trend: Not significant

Trend in Success of Raven in South Strathclyde using SRMS data

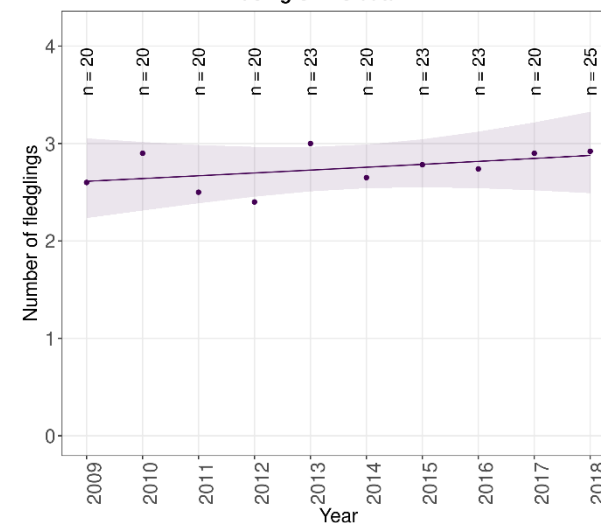


South Strathclyde trend: Decrease (caveats: No home range random effect)

No trend available
for clutch size

No trend available
for brood size

Trend in Number of fledglings of Raven in South Strathclyde using SRMS data



South Strathclyde trend: Not significant

Figure 6: Trends in breeding pairs, success, clutch size, brood size and the number of fledglings of Raven in South Strathclyde during 2009-2018.