

Tayside & Fife

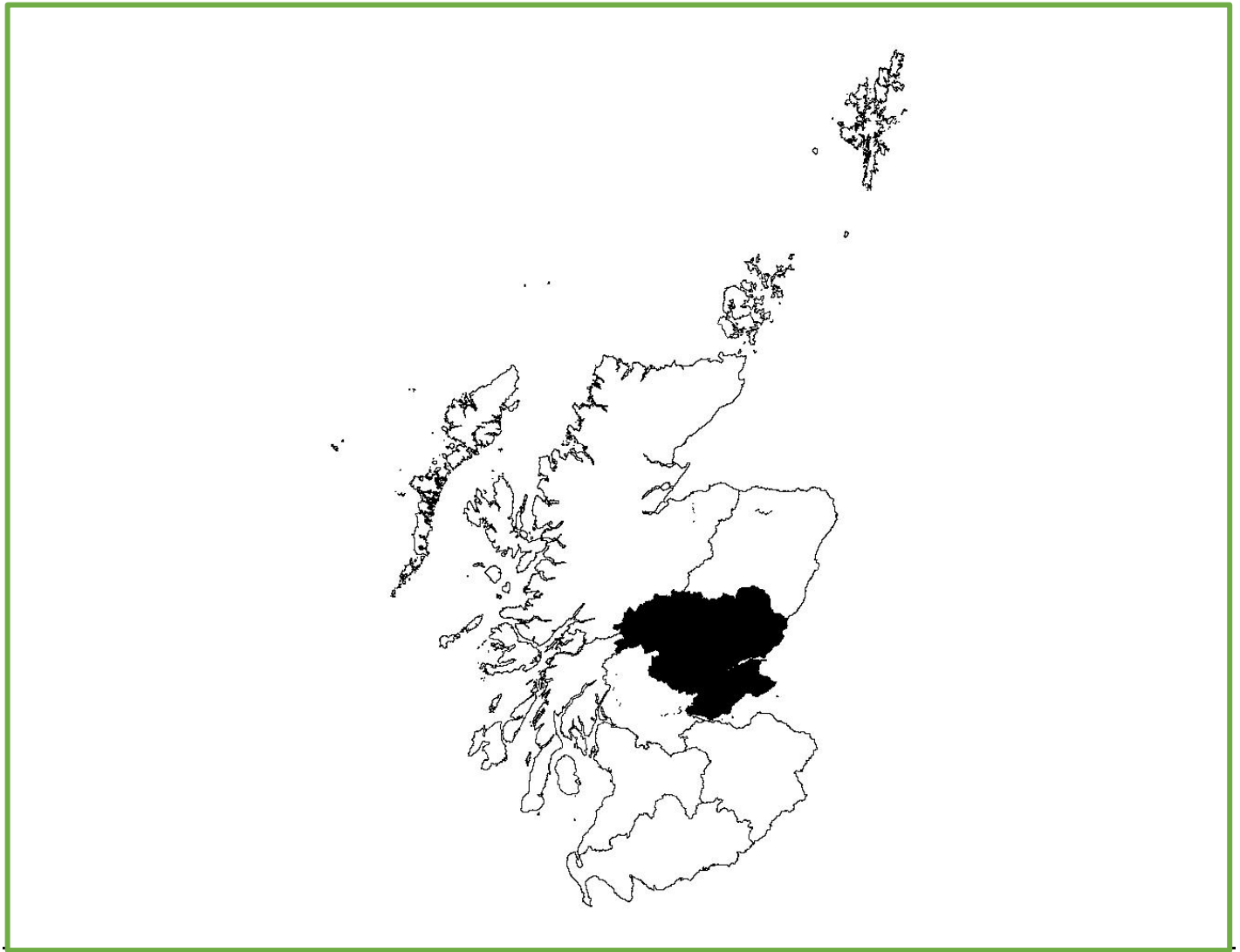


Figure 1: Tayside & Fife.

Trends in breeding numbers are available for eight species and trends in breeding success for eight of the 14 species for which the SRMS holds records for Tayside & Fife (Table 1).

Osprey

The number of breeding pairs and breeding success showed no significant change. Trends in clutch size, brood size and the number of fledglings all showed no significant change (Figure 2).

Golden Eagle

The number of breeding pairs and breeding success showed no significant change. No trends were available for clutch size and brood size but number of fledglings showed no significant change (Figure 3).

Hen Harrier

The number of breeding pairs showed no significant change while breeding success decreased significantly (-3.9%). Clutch size showed no significant change. No trends are available for brood size or the number of fledglings (Figure 4).

Red Kite

The number of breeding pairs showed non-linear variation. Breeding success showed no significant change. No trends were available for clutch size and brood size but number of fledglings showed no significant change (Figure 5).

Buzzard

The number of breeding pairs decreased significantly (-4.5%) while breeding success showed no significant change. No trends were available for

clutch size and brood size but number of fledglings showed no significant change (Figure 6).

Merlin

The number of breeding pairs and breeding success showed no significant change. No trends were available for clutch size, brood size or the number of fledglings (Figure 7).

Peregrine

The number of breeding pairs decreased significantly (-4.1%) while breeding success showed no significant change. No trends were available for clutch size and brood size but number of fledglings showed no significant change (Figure 8).

Raven

The number of breeding pairs and breeding success showed no significant change. No trends were available for clutch size and brood size but number of fledglings showed no significant change (Figure 9).

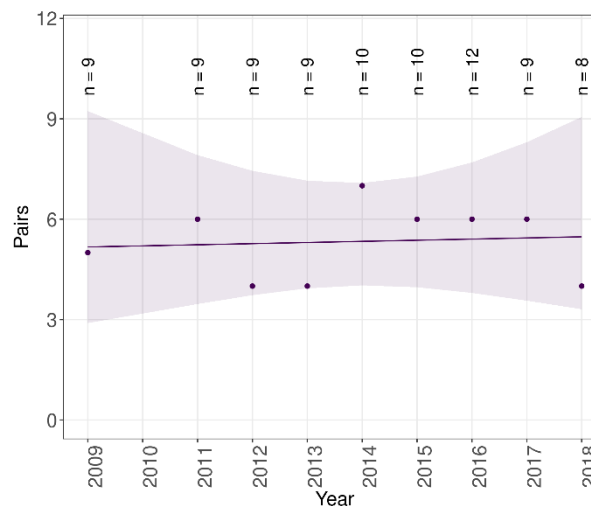
Table 1: Summary of SRMS trends for Tayside & Fife during 2009-2018. Figures in parentheses indicate the annual change, with significant decreases highlighted in blue and non-significant changes highlighted in grey. ‘—’ indicates where the species occurs but no trend is available.

| Species: | Pairs | Success | Clutch size | Brood size | Number of fledglings |
|--------------------|-------------------------------|-------------------------------|------------------------------|-----------------|------------------------------|
| Osprey | Not significant ^s | Not significant | Not significant | Not significant | Not significant |
| Golden Eagle | Not significant ^s | Not significant | — | — | Not significant ^s |
| Sparrowhawk | — | — | — | — | — |
| Goshawk | — | — | — | — | — |
| Hen Harrier | Not significant | Decrease (-3.9%) | Not significant ^s | — | — |
| Red Kite | Non-linear | Not significant ^x | — | — | Not significant |
| White-tailed Eagle | — | — | — | — | — |
| Buzzard | Decrease (-4.5%) | Not significant | — | — | Not significant |
| Barn Owl | — | — | — | — | — |
| Tawny Owl | — | — | — | — | — |
| Kestrel | — | — | — | — | — |
| Merlin | Not significant ^{sv} | Not significant ^{rs} | — | — | — |
| Peregrine | Decrease (-4.1%) | Not significant | — | — | Not significant |
| Raven | Not significant | Not significant | — | — | Not significant |

^r No home range random effect, ^s Sample sizes small, ^v Variable effort, ^x Expanding population.

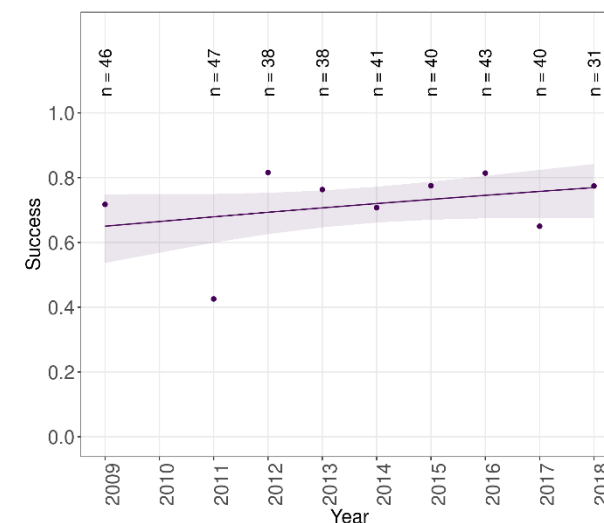


Trend in Pairs of Osprey in Tayside & Fife using SRMS data



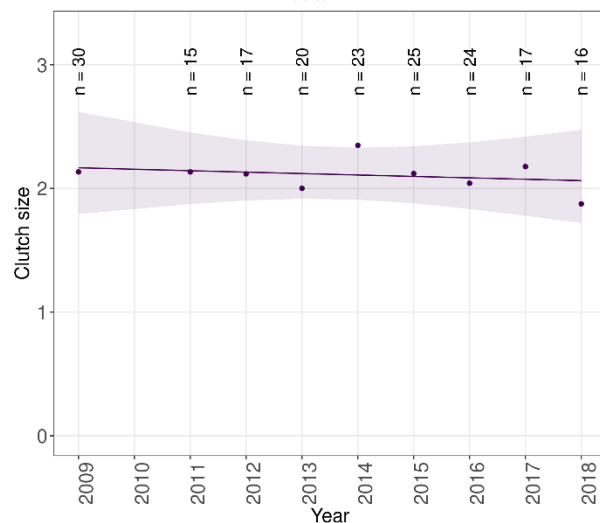
Tayside & Fife trend: Not significant (caveats: Sample sizes small)

Trend in Success of Osprey in Tayside & Fife using SRMS data



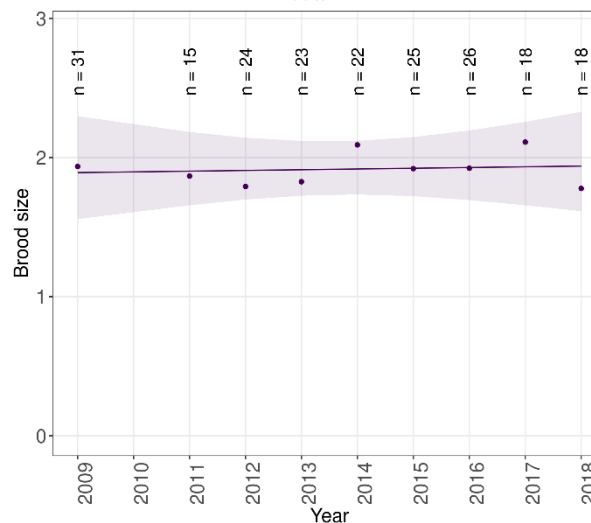
Tayside & Fife trend: Not significant

Trend in Clutch size of Osprey in Tayside & Fife using SRMS data



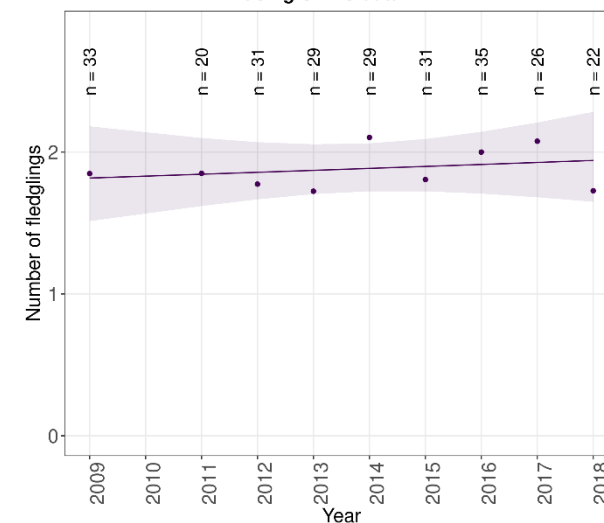
Tayside & Fife trend: Not significant

Trend in Brood size of Osprey in Tayside & Fife using SRMS data



Tayside & Fife trend: Not significant

Trend in Number of fledglings of Osprey in Tayside & Fife using SRMS data

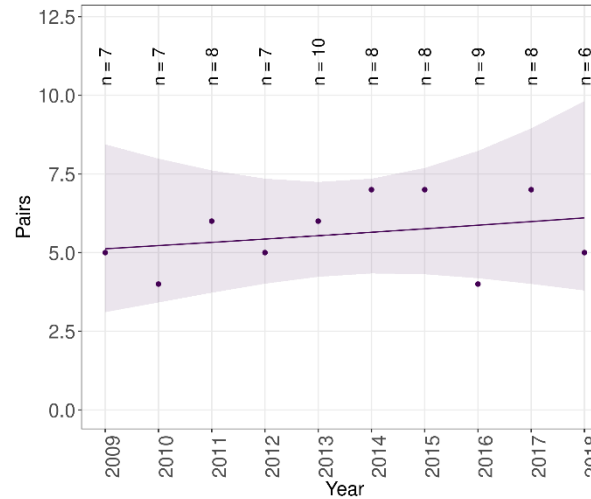


Tayside & Fife trend: Not significant

Figure 2: Trends in breeding pairs, success, clutch size, brood size and the number of fledglings of Osprey in Tayside & Fife during 2009-2018.

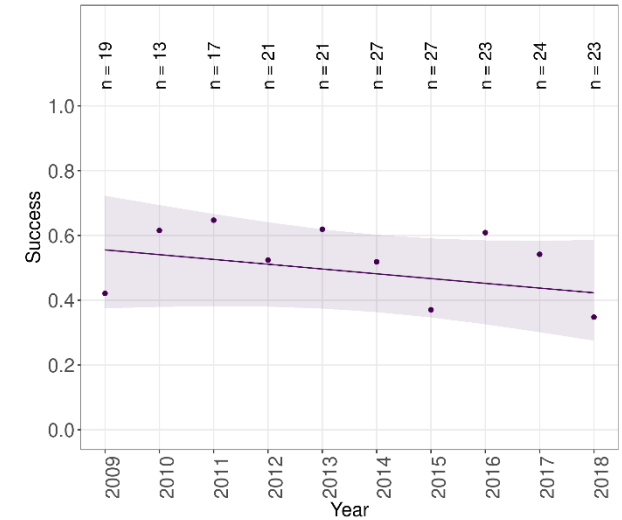


Trend in Pairs of Golden Eagle in Tayside & Fife using SRMS data



Tayside & Fife trend: Not significant (caveats: Sample sizes small)

Trend in Success of Golden Eagle in Tayside & Fife using SRMS data

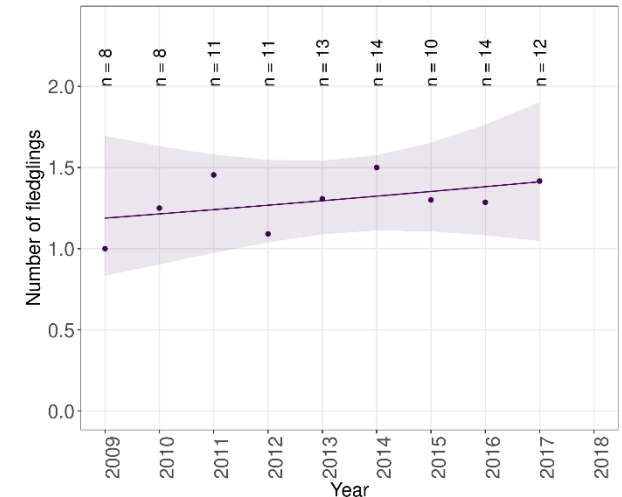


Tayside & Fife trend: Not significant

No trend available
for clutch size

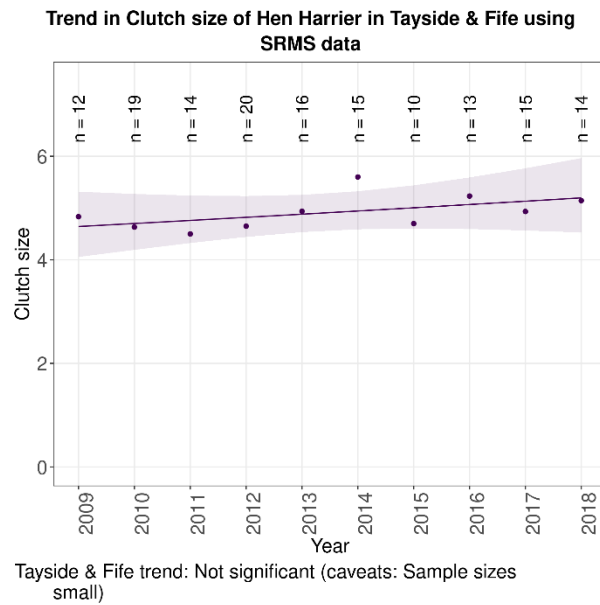
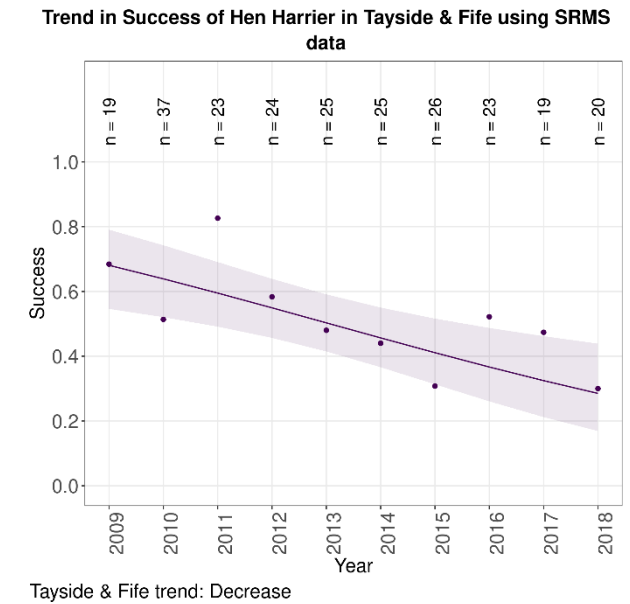
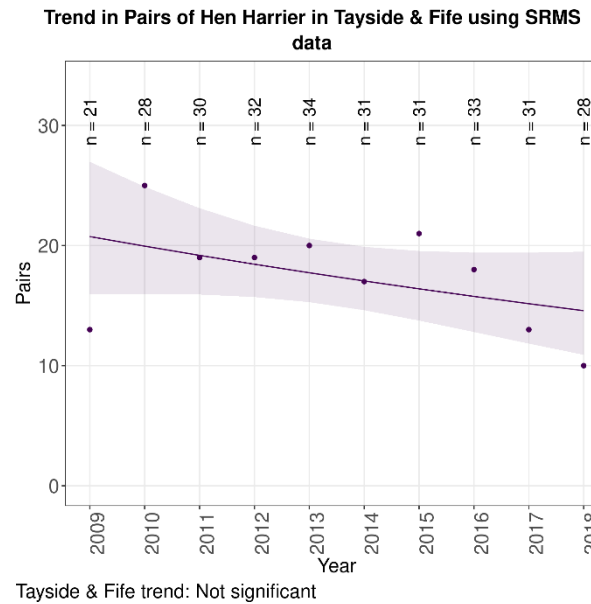
No trend available
for brood size

Trend in Number of fledglings of Golden Eagle in Tayside & Fife using SRMS data



Tayside & Fife trend: Not significant (caveats: Sample sizes small)

Figure 3: Trends in breeding pairs, success, clutch size, brood size and the number of fledglings of Golden Eagle in Tayside & Fife during 2009-2018.



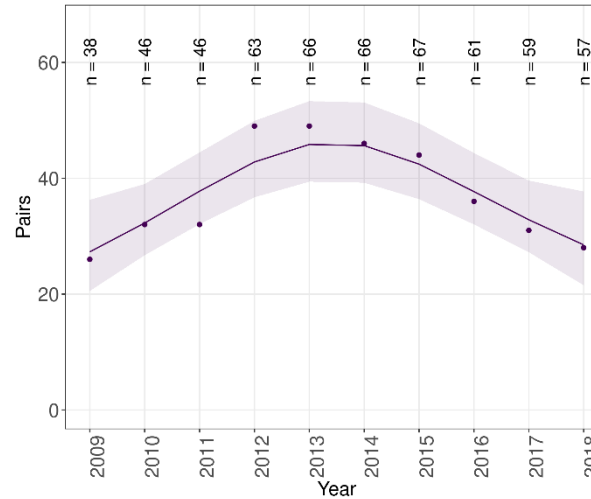
No trend available
for brood size

No trend available
for number of fledglings

Figure 4: Trends in breeding pairs, success, clutch size, brood size and the number of fledglings of Hen Harrier in Tayside & Fife during 2009-2018.

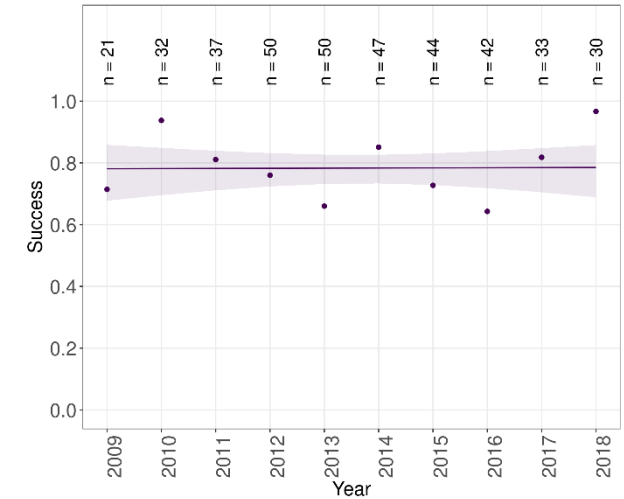


Trend in Pairs of Red Kite in Tayside & Fife using SRMS data



Tayside & Fife trend: Non-linear (caveats: Expanding population)

Trend in Success of Red Kite in Tayside & Fife using SRMS data

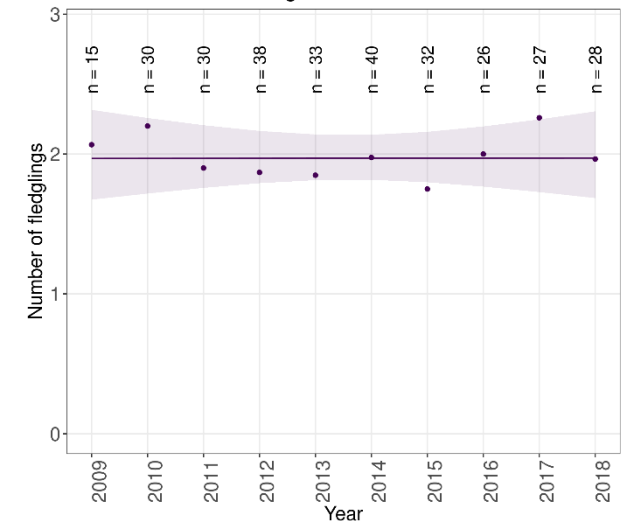


Tayside & Fife trend: Not significant (caveats: Expanding population)

No trend available
for clutch size

No trend available
for brood size

Trend in Number of fledglings of Red Kite in Tayside & Fife using SRMS data

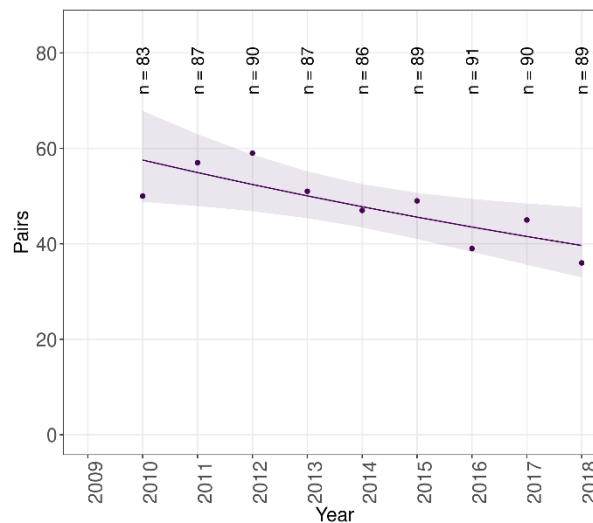


Tayside & Fife trend: Not significant

Figure 5: Trends in breeding pairs, success, clutch size, brood size and the number of fledglings of Red Kite in Tayside & Fife during 2009-2018.

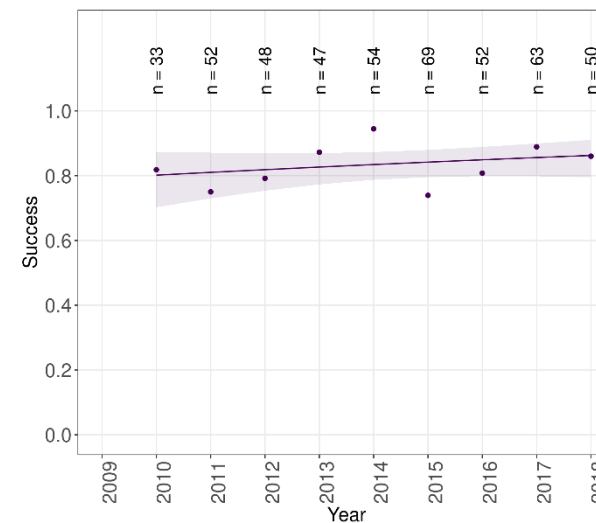


Trend in Pairs of Buzzard in Tayside & Fife using SRMS data



Tayside & Fife trend: Decrease

Trend in Success of Buzzard in Tayside & Fife using SRMS data

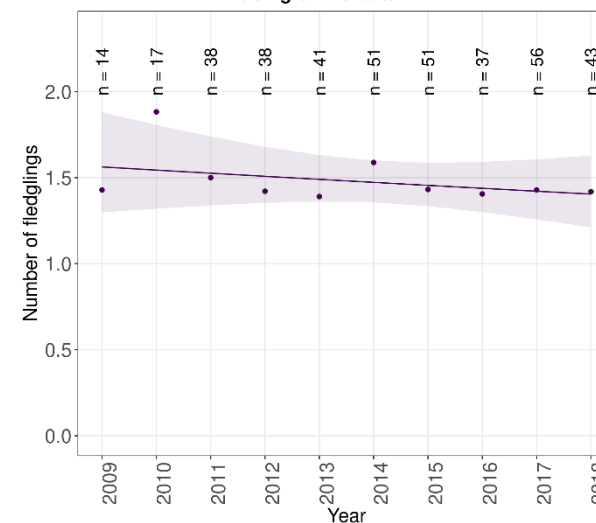


Tayside & Fife trend: Not significant

No trend available
for clutch size

No trend available
for brood size

Trend in Number of fledglings of Buzzard in Tayside & Fife using SRMS data

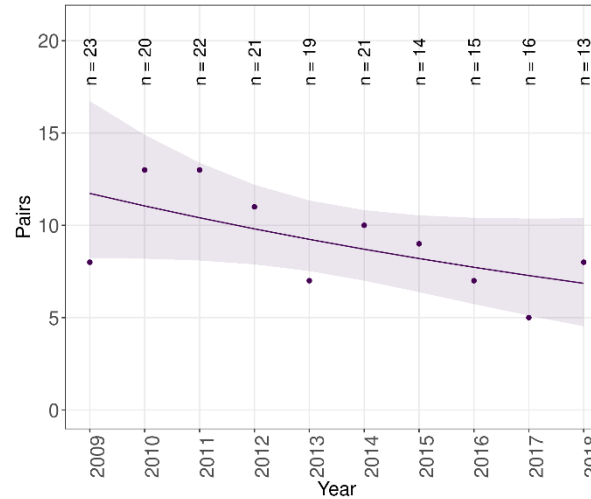


Tayside & Fife trend: Not significant

Figure 6: Trends in breeding pairs, success, clutch size, brood size and the number of fledglings of Buzzard in Tayside & Fife during 2009-2018.

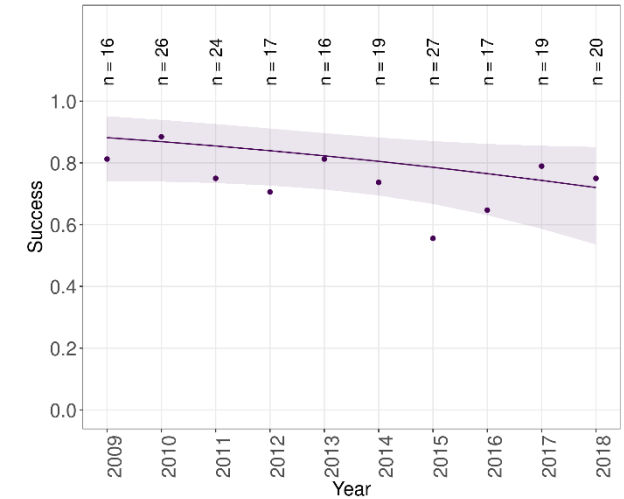


Trend in Pairs of Merlin in Tayside & Fife using SRMS data



Tayside & Fife trend: Not significant (caveats: Sample sizes small, Variable effort)

Trend in Success of Merlin in Tayside & Fife using SRMS data



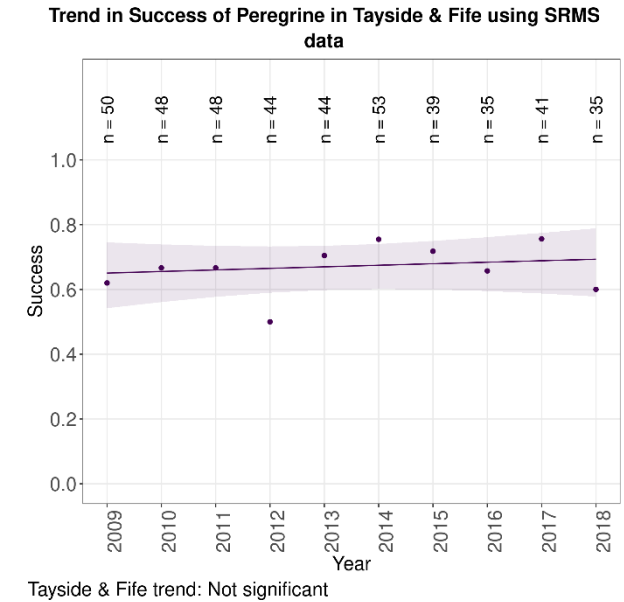
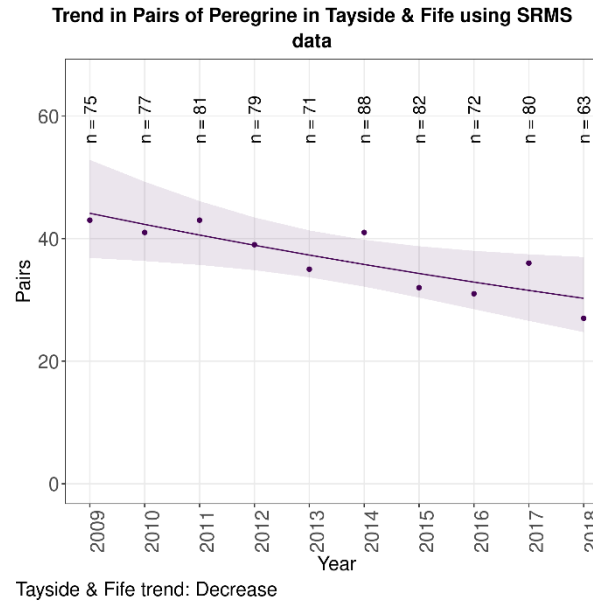
Tayside & Fife trend: Not significant (caveats: Sample sizes small, No home range random effect)

No trend available
for clutch size

No trend available
for brood size

No trend available
for number of fledglings

Figure 7: Trends in breeding pairs, success, clutch size, brood size and the number of fledglings of Merlin in Tayside & Fife during 2009-2018.



No trend available
for clutch size

No trend available
for brood size

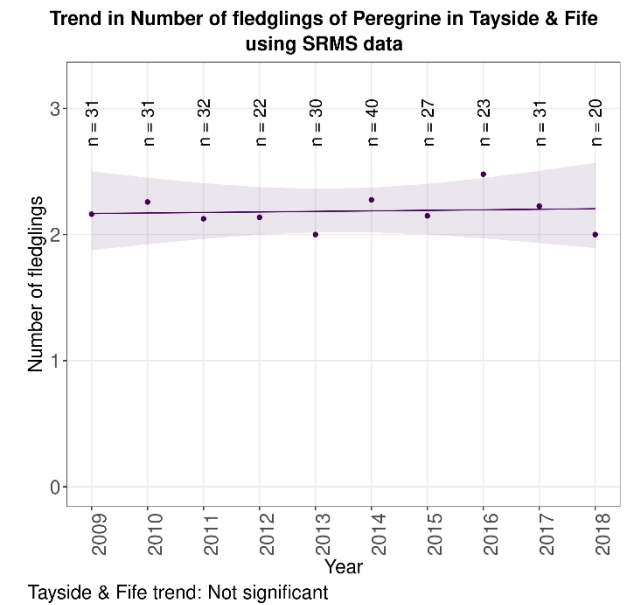
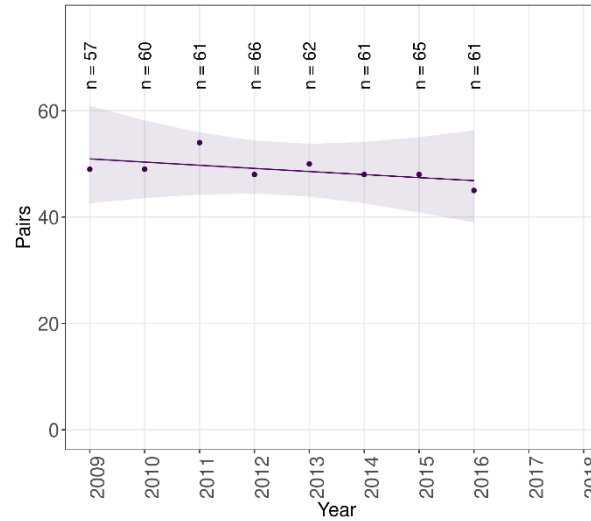


Figure 8: Trends in breeding pairs, success, clutch size, brood size and the number of fledglings of Peregrine in Tayside & Fife during 2009-2018.

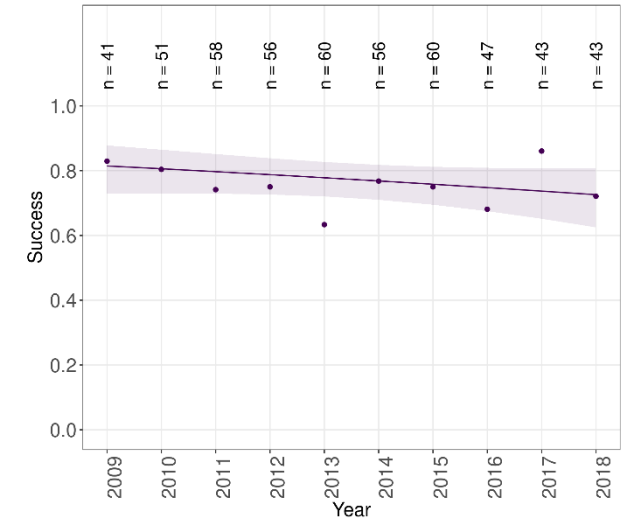


Trend in Pairs of Raven in Tayside & Fife using SRMS data



Tayside & Fife trend: Not significant

Trend in Success of Raven in Tayside & Fife using SRMS data

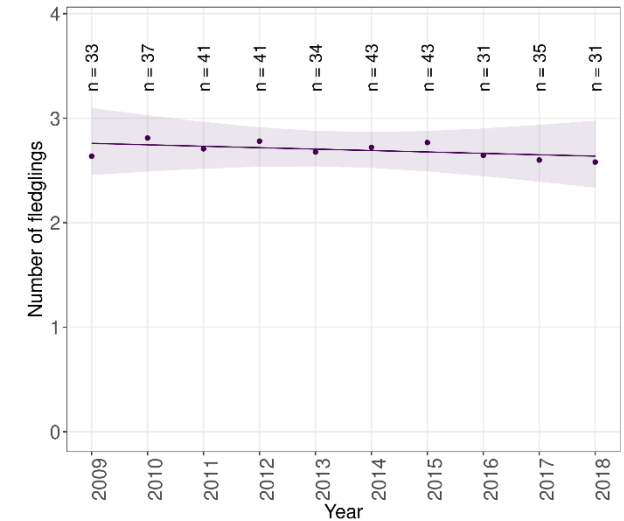


Tayside & Fife trend: Not significant

No trend available
for clutch size

No trend available
for brood size

Trend in Number of fledglings of Raven in Tayside & Fife using SRMS data



Tayside & Fife trend: Not significant

Figure 9: Trends in breeding pairs, success, clutch size, brood size and the number of fledglings of Raven in Tayside & Fife during 2009-2018.